

Scottish Borders Child Poverty Index 2023

May 2024

E.R. Murray for Scottish Borders Council (experimental statistics)

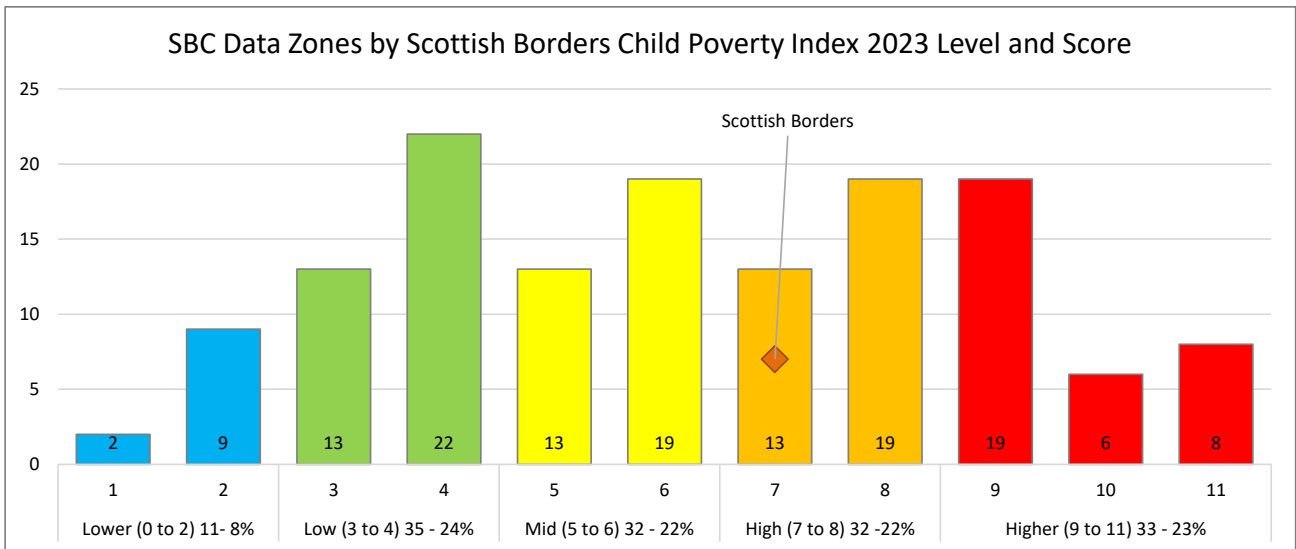
Table of Contents

Scottish Borders Child Poverty Index 2023 Summary.....	2
SB CPI: Purpose and Scoring.....	3
Scottish Borders Child Poverty Index 2023 Components	4
Scottish Borders Child Poverty Index 2023 Results.....	6
Scottish Borders Child Poverty Level Change Over Time 2017 to 2023.....	7
Comparing Scottish Borders Child Poverty Index 2023 to SIMD 2020.....	9
Appendix 2: Level of Child Poverty 2017 – 2023, SBC, Ward and Data Zone	11
Scottish Borders and Wards	11
Berwickshire	11
Cheviot	12
Eildon.....	12
Teviot and Liddesdale.....	13
Tweeddale.....	14

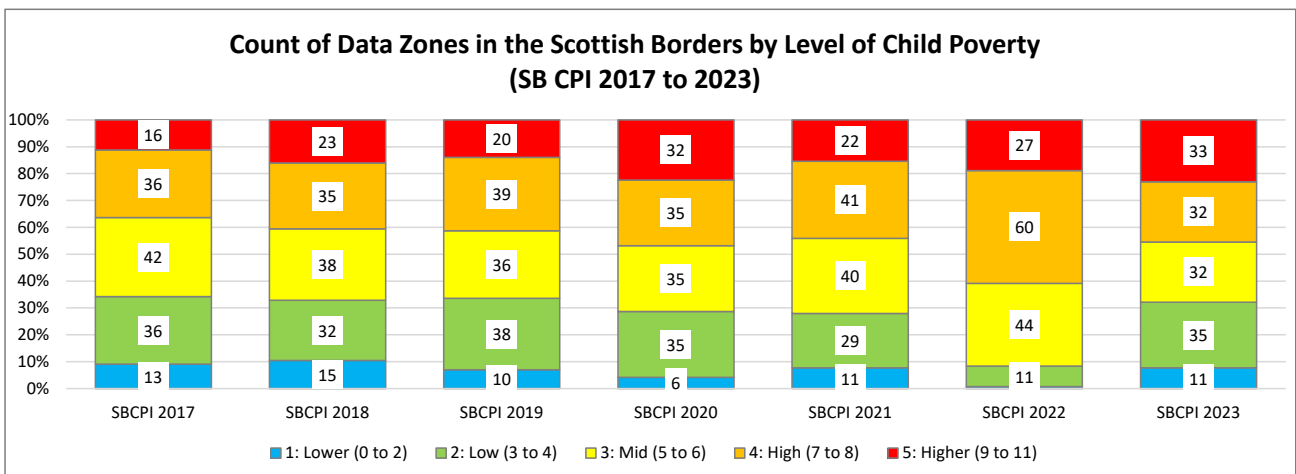
Scottish Borders Child Poverty Index 2023 Summary

The report marks the seventh year of the Scottish Borders Child Poverty Index (SB CPI), it provides an overview into Child Poverty in the Scottish Borders. The SB CPI is created from two components: Children in Low Income Families and Pupils registered for Clothing Grant.

The graph below shows the distribution of data zones in the Scottish Borders by their SB CPI 2023 score. In 2023 the Scottish Borders had a score of 7 which is part of the 'High' level of child poverty.



The graph below shows the proportion (with number) of data zones by each level of child poverty from 2017 to 2023. The impact of Covid19 and the cost-of-living crisis can be seen in the number/proportion of data zones with Mid/High/Higher levels of child poverty. 66% of data zones had Mid/High/Higher levels of child poverty in 2017 that increased to 71% in 2020 and then to 92% for 2022. In 2023 the proportion of data zones with Mid/High/Higher levels of child poverty return to pre-covid level with 68%.



SB CPI: Purpose and Scoring

The purpose of the **Scottish Borders Child Poverty Index (SB CPI)**¹ is to provide additional insight into Child Poverty in the Scottish Borders. It is an *experimental* tool that may be used as a proxy for understanding the level of child poverty within the Scottish Borders.

The SB CPI was also created to work alongside the Scottish Index of Multiple Deprivation. SIMD provides a way of looking at deprivation in an area, covering the whole population and does not specifically reflect child poverty.

The SB CPI is a tool to help inform the Local Child Poverty Action Plan and which is a requirement of the Child Poverty Act (Scotland) 2017. The SB CPI is a summary of four components, which are:

- Children in Low Income Families (**CiLIF**) – Source is [DWP/HMRC](#).² Relative low-income is defined as a family whose equivalised income is below 60 per cent of contemporary median income. Gross income measure is Before Housing Costs (BHC) and includes contributions from earnings, state support and pensions. The SB CPI uses the most recent available year's data, currently there is a one-year lag e.g. for SB CPI 2022 uses the CiLIF data for 2021-22.
- Clothing Grant (**CLG**) - Source is SBC. The proportion of pupils recorded for Clothing Grant of all pupils in area for school year.

The table below shows the results for Scottish Border for 2017 to 2023

Child Poverty Index Component / Year	SB CPI 2017	SB CPI 2018	SB CPI 2019	SB CPI 2020	SB CPI 2021	SB CPI 2022	SB CPI 2023
Children in Low Income Families - CiLIF (DWP)*	19.0%	20.7%	20.5%	22.0%	18.0%	23.8%	23.9%
Clothing Grant - CLG (SBC)	14.6%	15.1%	15.2%	18.1%	18.0%	18.8%	16.7%

The table below shows the score that an area will receive based on the result for each component. The SB CPI allows an area to have a score ranging from 0 to 11, where 0 indicates no element of child poverty and 11 the highest levels of child poverty.

Children in Low Income Families (DWP)	Clothing Grant (SBC)	SB Child Poverty Index (revised)	
		Points	Level
0: None	0: None	0 to 2	1: Lower
1: Under 10%	1: Under 5%	3 to 4	2: Low
2: 10% to Under 20%	2: 5% to Under 10%	5 to 6	3: Mid
3: 20% to Under 30%	3: 10% to Under 15%	7 to 8	4: High
4: 30% to Under 40%	4: 15% to Under 20%	9 to 11	5: Higher
5: 40% or More	5: 20 to Under 30%		
	6: 30% or More		

¹ Revised November 2023

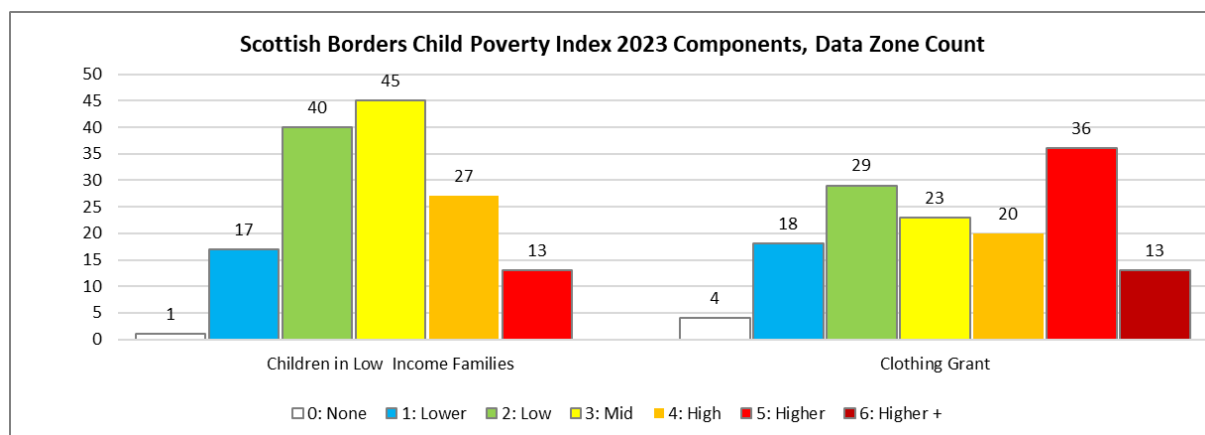
² *The calculation of proportion of Children in Low Income Families for the purpose of the Scottish Borders Child Poverty Index differs to 'official statistics' due to the availability of the data from Stat-Xplore. The children in Stat-Xplore are defined as dependent individuals aged under 16; or aged 16 to 19 in full-time non-advanced education or in unwaged government training. (Not just those aged under 16 – unable to group into age bands). The figure for all children is then expressed as proportion of those aged 0 to 15 as published by NRS. It is recognised that this calculation is imperfect, but practical for the purpose of the SB CPI.

Scottish Borders Child Poverty Index 2023 Components

The table below shows the allocation of data zones in the Scottish Borders for each of the components by count and proportion within each grouping.

Component Points	Children in Low Income Families		Clothing Grant	
	Count	Percent	Count	Percent
0: None	1	1%	4	3%
1: Lower	17	12%	18	13%
2: Low	40	28%	29	20%
3: Mid	45	31%	23	16%
4: High	27	19%	20	14%
5: Higher	13	9%	36	25%
6: Higher +		0%	13	9%
SBC Data Zones	143	100%	143	100%

The graph below shows the count of data zones for each component by grouping.

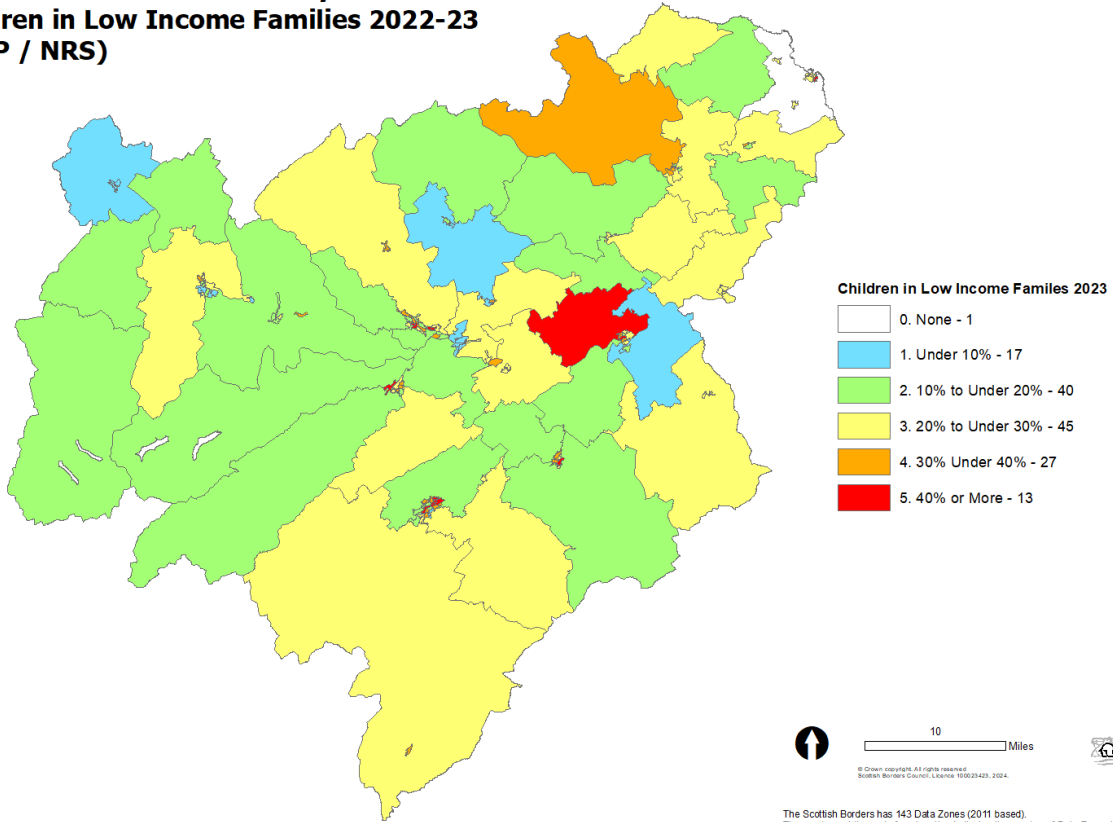


The table below shows the proportions of data zones by their Children in Low Income Families group and Clothing Grant group.

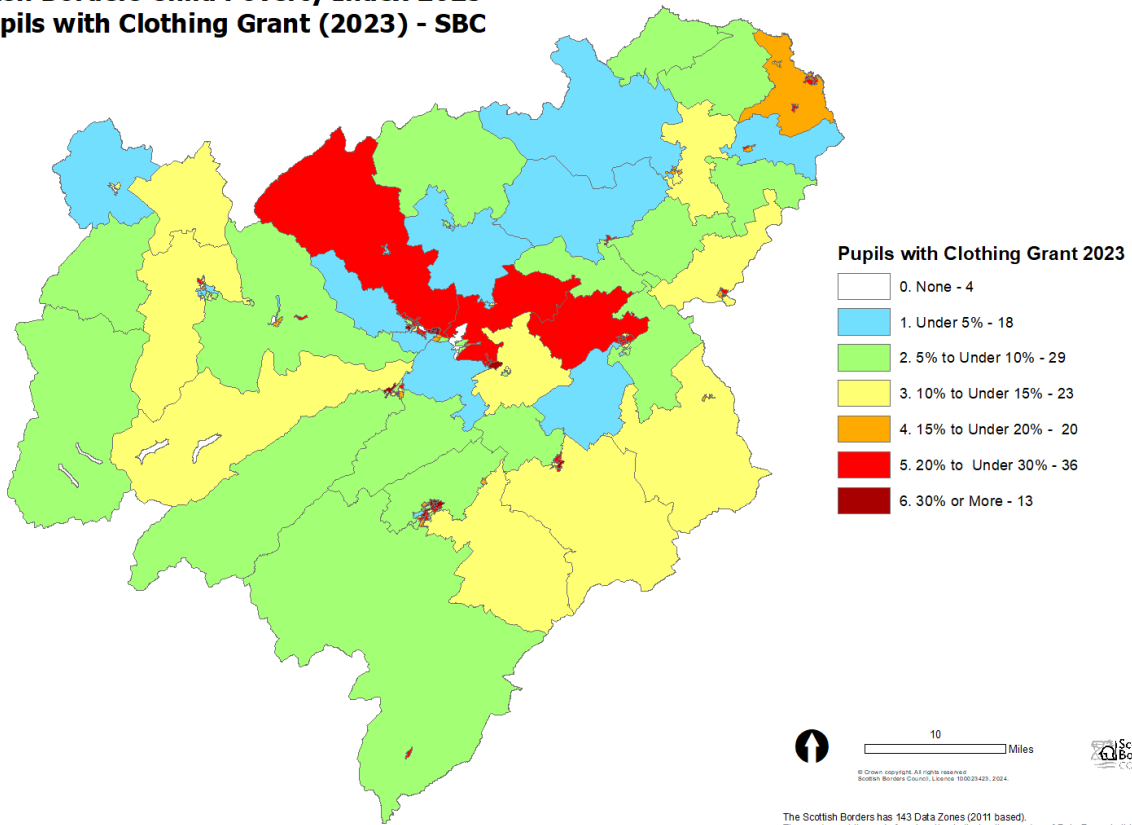
		Children in Low Income Families Group						
		0: None	1: Lower	2: Low	3: Mid	4: High	5: Higher	Scottish Borders
Clothing Grant Group	0: None	1%	1%					3%
	1: Lower		5%	5%	1%	1%		13%
	2: Low		4%	12%	4%			20%
	3: Mid		1%	3%	8%	2%	1%	16%
	4: High	1%		5%	6%	2%	1%	14%
	5: Higher			1%	10%	11%	2%	25%
	6: Higher +				1%	2%	6%	9%
Scottish Borders		1%	12%	28%	31%	19%	9%	100%

The following page shows the maps for the groupings for each component.

**Scottish Borders Child Poverty Index 2023
Children in Low Income Families 2022-23
(DWP / NRS)**

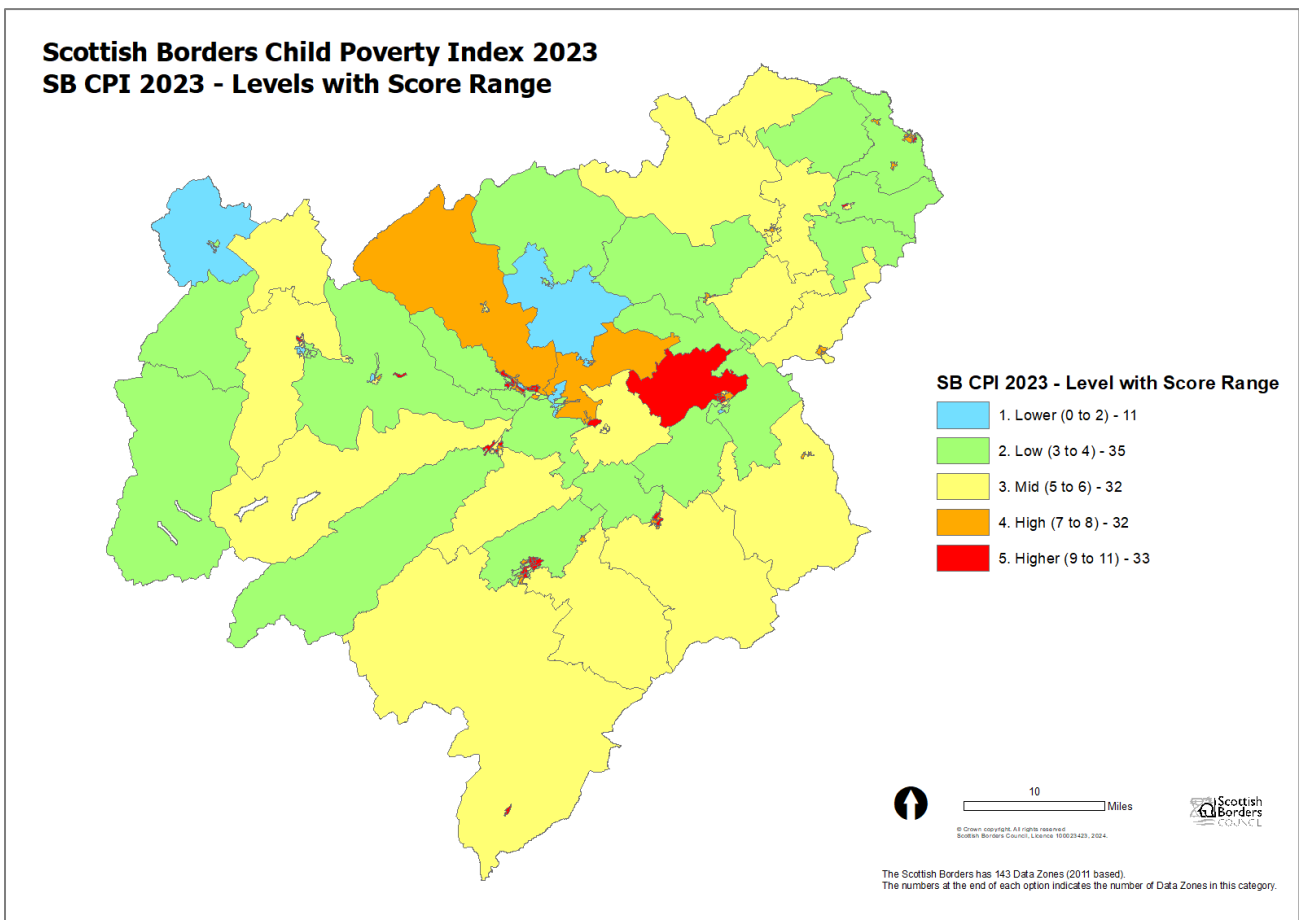
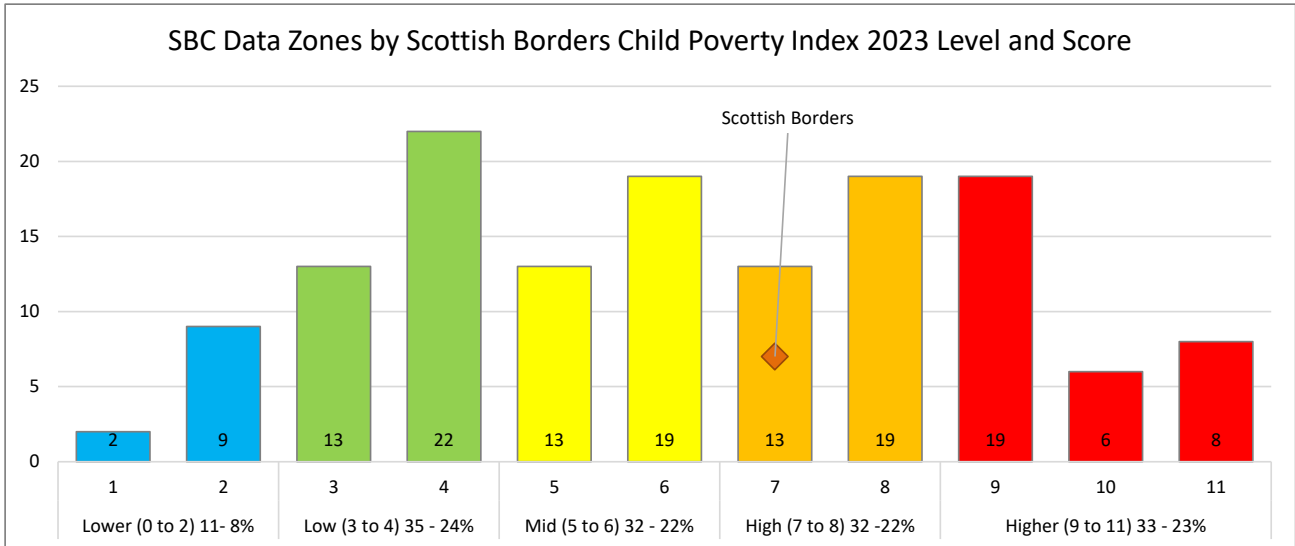


**Scottish Borders Child Poverty Index 2023
% Pupils with Clothing Grant (2023) - SBC**



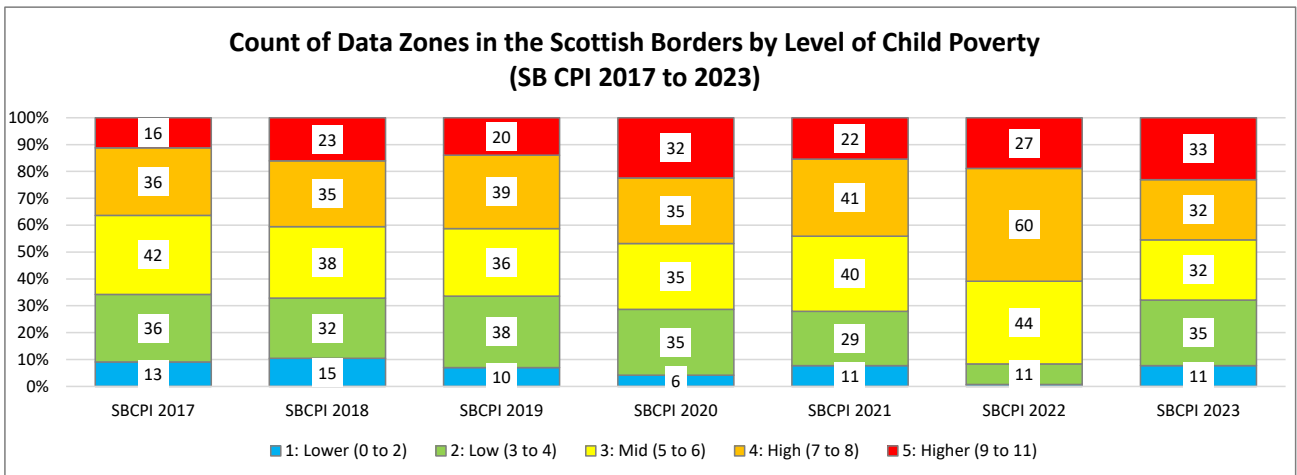
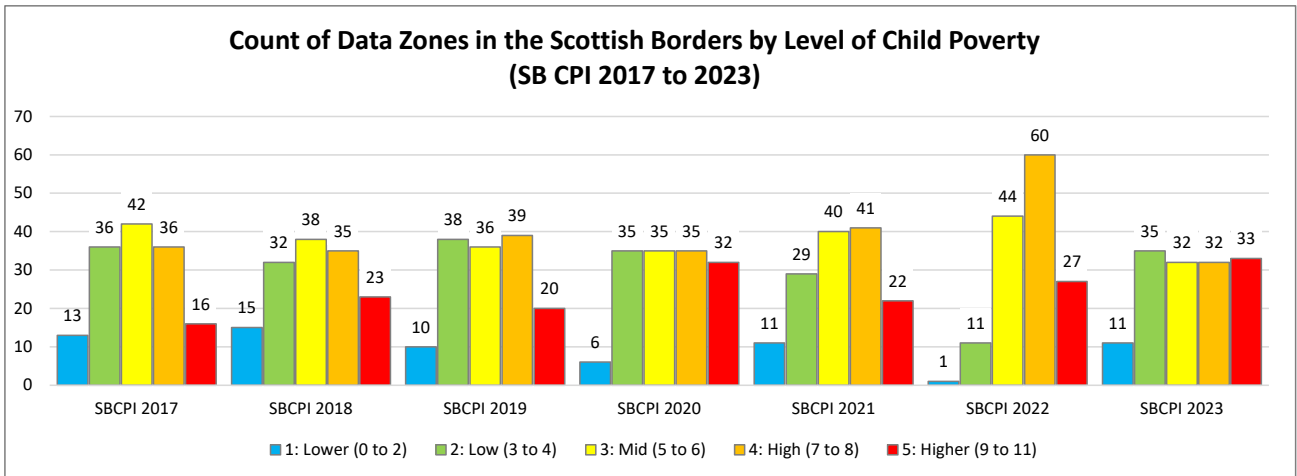
Scottish Borders Child Poverty Index 2023 Results

The graph and map below show the Scottish Borders data zones based on the SB CPI score, grouped into levels of Child Poverty. Higher level (33 data zones) has a score of 9 to 11; High level (32 data zones) have a score of 7 or 8; Mid level (32 data zones) have a score of 5 or 6; Low level (35 data zones) have a score of 3 or 4; and Lower level (11 data zone) has a score of 0 to 2. Every data zone in the Scottish Borders has some element of child poverty. The Scottish Borders SB CPI score for 2023 was 7 in the High level.



Scottish Borders Child Poverty Level Change Over Time 2017 to 2023

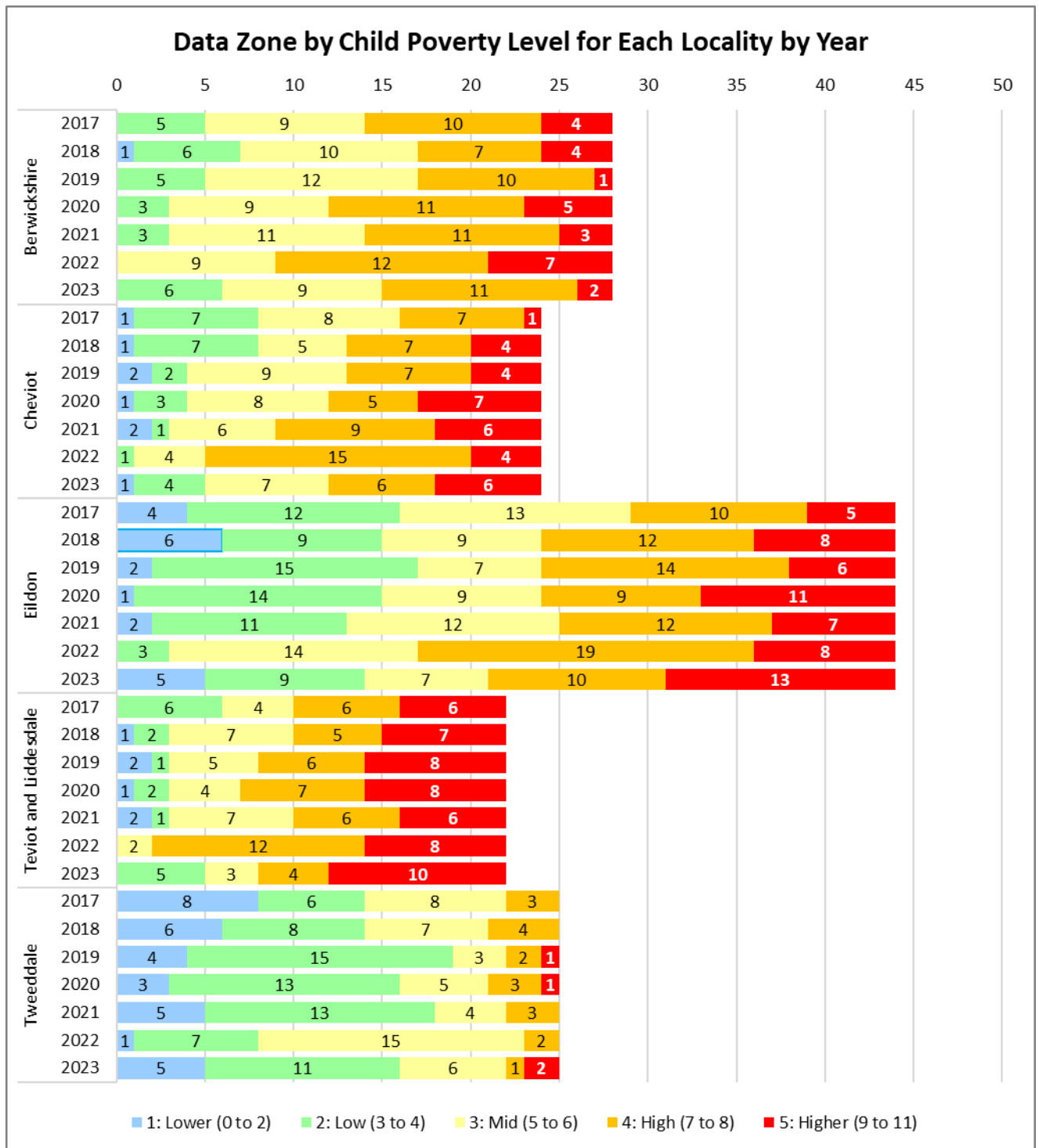
The graph below shows the distribution of data zones by level of child poverty for between 2017 and 2023.



The impact of Covid19 and the cost-of-living crisis can be seen in the number/proportion of data zones with Mid/High/Higher levels of child poverty. 66% of data zones had Mid/High/Higher levels of child poverty in 2017 that increased to 71% in 2020 and then to 92% for 2022, reflecting the impact of the cost-of-living. However, for 2023 the proportion of data zones with Mid/High/Higher levels of child poverty return to pre-covid level with 68%.

Appendix 1: Level of Child Poverty 2017 – 2023, SBC, Ward and Data Zone lists the data zones within each ward along with its SIMD2020 decile and the SB CPI level for 2017, 2018, 2019, 2020, 2021, 2022, and 2023.

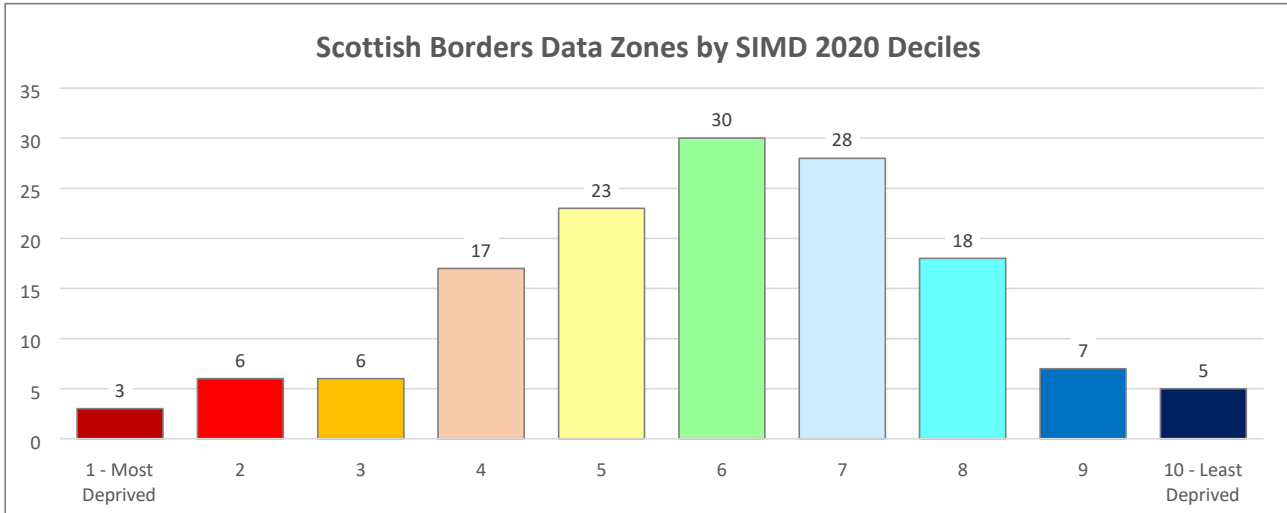
The graph below shows the distribution of data zones in each of the localities by level of child poverty for each of the years.



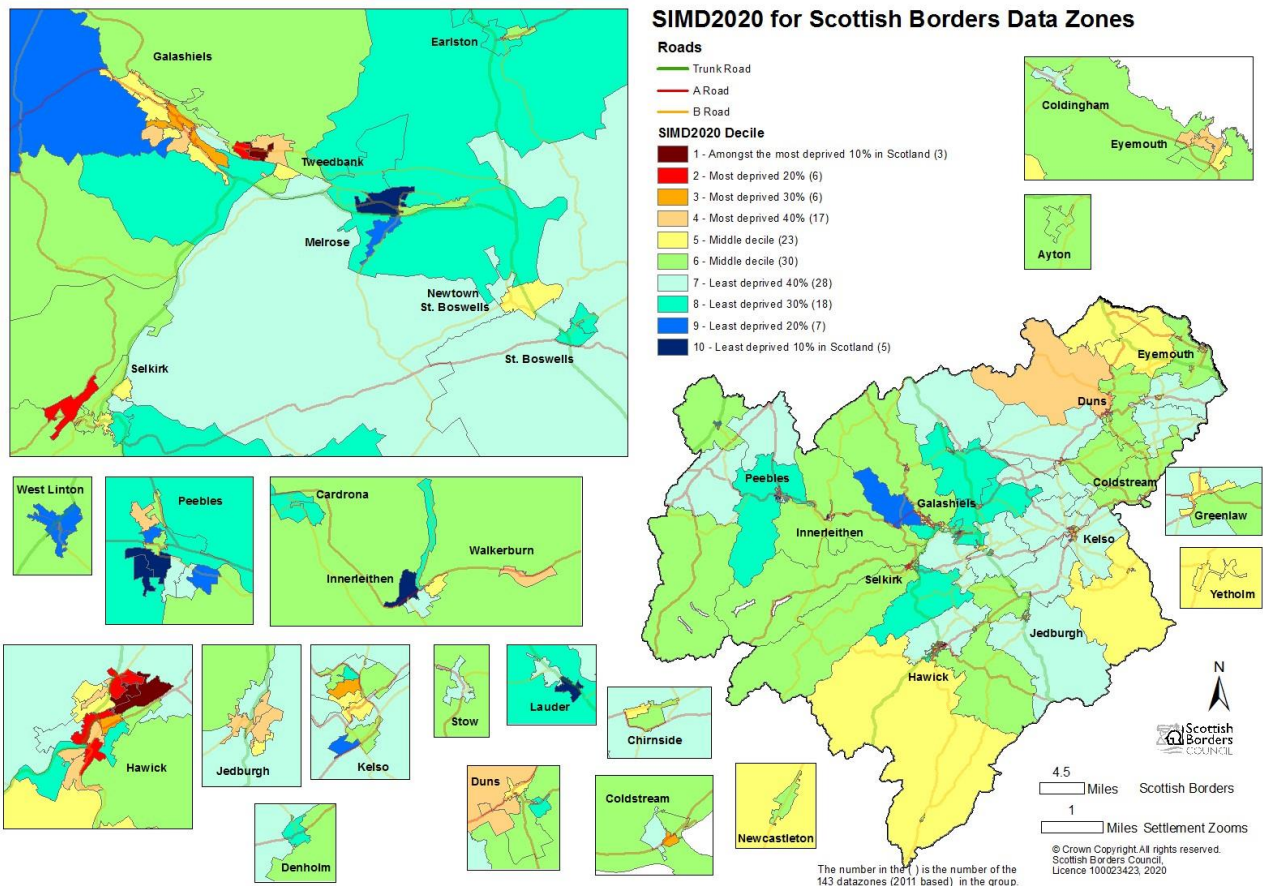
Comparing Scottish Borders Child Poverty Index 2023 to SIMD 2020

The Scottish Index of Multiple Deprivation (SIMD) is a good tool for identifying overall deprivation, however, it is not poverty specific, or child focused. The SB CPI is a tactical index created to enable better insight into child poverty within the Scottish Borders. This is a basic comparison between SIMD2020 Decile and SB CPI Score.

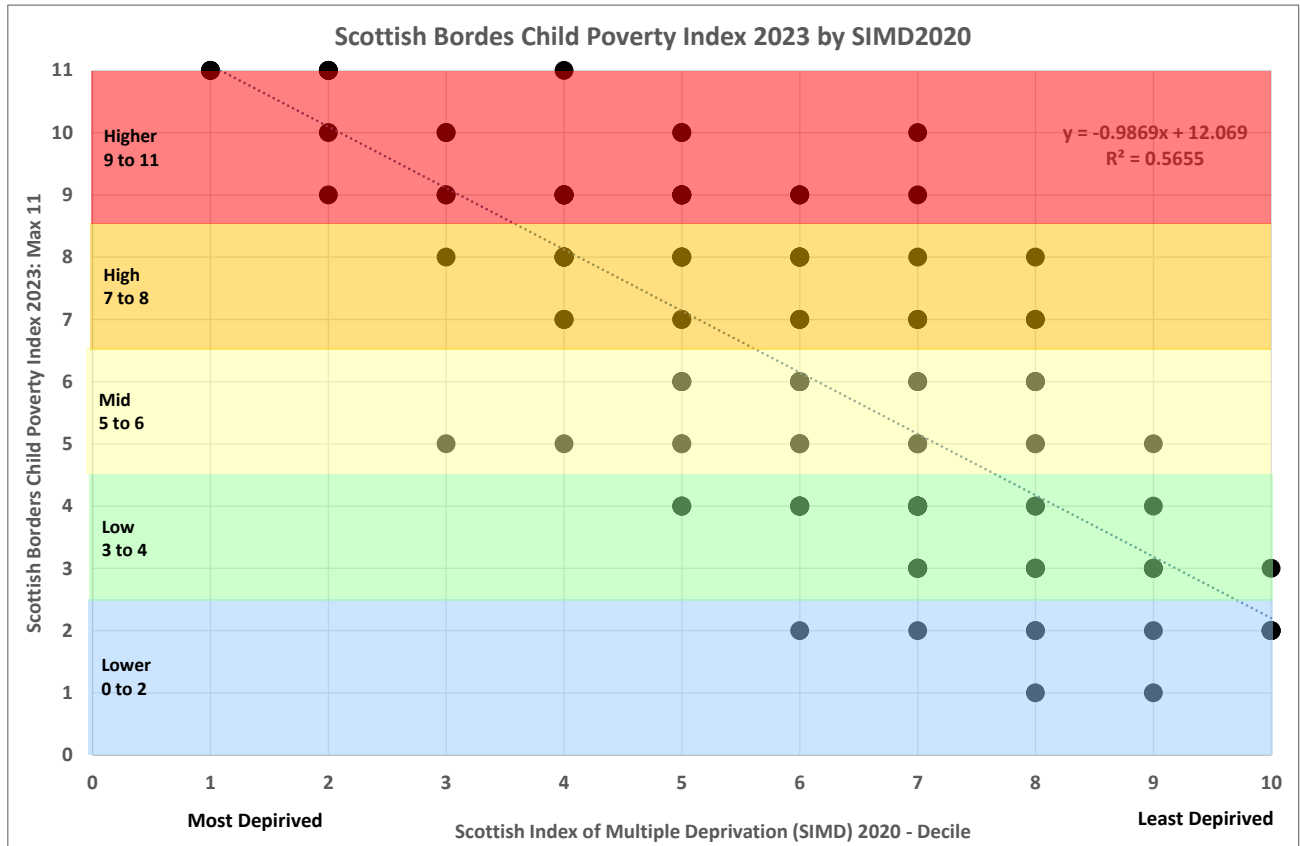
The graph below shows the count of the 143 data zones in the Scottish Borders by the SIMD 2020 Decile.



The map below shows the Scottish Borders data zones and the SIMD2020 decile.



The graph below shows where the SB CPI 2023 score for each of the 143 data zones related to SIMD2020 decile. The graph shows that the SIMD2020 does have a correlation with the child poverty levels for 2023. Although it is of note that areas in the Scottish Borders with a SIMD 2020 decile of 6 or 7 have a higher level of child poverty.



The table below shows the proportion of Scottish Borders data zones by their SIMD2020 Deciles and their SB CPI 2023 level as well as the proportion of data zones in the SIMD2020 Decile that have Mid/High/Higher child poverty levels for 2023. Overall, 68% of Scottish Borders data zones were in areas of Mid/High/Higher levels of child poverty. Within the SIMD2020 deciles the proportion ranges from 0% to 100%.

SIMD2020 Decile / SB CPI 2023 Level	1. Lower (0 to 2)	2. Low (3 to 4)	3. Mid (5 to 6)	4. High (7 to 8)	5. Higher (9 to 11)	Scottish Borders Data Zones	% Mid/ High / Higher of Decile
1 - Most Deprived					2%	2%	100%
2					4%	4%	100%
3			1%	1%	3%	4%	100%
4			1%	6%	5%	12%	100%
5		2%	4%	4%	6%	16%	87%
6	1%	4%	8%	6%	2%	21%	77%
7	1%	10%	4%	3%	1%	20%	43%
8	2%	4%	4%	2%		13%	50%
9	1%	3%	1%			5%	14%
10 - Least Deprived	3%	1%				3%	0%
Scottish Borders	8%	24%	22%	22%	23%	100%	68%

Percentages rounded to nearest whole.

Appendix 2: Level of Child Poverty 2017 – 2023, SBC, Ward and Data Zone

Scottish Borders and Wards

Area	SB CPI 2017 Level	SB CPI 2018 Level	SB CPI 2019 Level	SB CPI 2020 Level	SB CPI 2021 Level	SB CPI 2022 Level	SB CPI 2023 Level
Scottish Borders	3. Mid	4. High	4. High	4. High	3. Mid	4. High	4. High
East Berwickshire	4. High	4. High	4. High	4. High	3. Mid	4. High	4. High
Mid Berwickshire	3. Mid	3. Mid	3. Mid	3. Mid	4. High	4. High	3. Mid
Jedburgh and District	3. Mid	3. Mid	4. High	4. High	4. High	4. High	4. High
Kelso and District	3. Mid	3. Mid	4. High	4. High	4. High	4. High	4. High
Galashiels and District	4. High	4. High	4. High	4. High	4. High	4. High	5. Higher
Leaderdale and Melrose	2. Low	2. Low	2. Low	2. Low	3. Mid	3. Mid	2. Low
Selkirkshire	4. High	4. High	4. High	4. High	4. High	4. High	4. High
Hawick and Denholm	4. High	5. Higher	5. Higher	5. Higher	4. High	5. Higher	5. Higher
Hawick and Hermitage	4. High	4. High	4. High	4. High	4. High	4. High	4. High
Tweeddale East	2. Low	2. Low	2. Low	2. Low	3. Mid	3. Mid	2. Low
Tweeddale West	2. Low	2. Low	2. Low	3. Mid	3. Mid	3. Mid	3. Mid

Berwickshire

East Berwickshire

Area	SB CPI 2017 Level	SB CPI 2018 Level	SB CPI 2019 Level	SB CPI 2020 Level	SB CPI 2021 Level	SB CPI 2022 Level	SB CPI 2023 Level
Scottish Borders	3. Mid	4. High	4. High	4. High	3. Mid	4. High	4. High
East Berwickshire	4. High	4. High	4. High	4. High	3. Mid	4. High	4. High

DZ2011 code and Name	SIMD2020v2 Decile	SB CPI 2017 Level	SB CPI 2018 Level	SB CPI 2019 Level	SB CPI 2020 Level	SB CPI 2021 Level	SB CPI 2022 Level	SB CPI 2023 Level
S01012309: Ayton	6	3. Mid	3. Mid	3. Mid	4. High	4. High	3. Mid	4. High
S01012310: St Abbs and Eyemouth Landward	6	2. Low	2. Low	3. Mid	4. High	4. High	4. High	2. Low
S01012311: Coldingham	7	5. Higher	5. Higher	4. High	5. Higher	5. Higher	5. Higher	4. High
S01012312: Reston and Coldingham Moor Area	5	4. High	3. Mid	3. Mid	3. Mid	3. Mid	3. Mid	2. Low
S01012313: Cockburnspath and Area	5	3. Mid	3. Mid	3. Mid	4. High	3. Mid	5. Higher	3. Mid
S01012314: Eyemouth - Gunsreen	5	5. Higher	4. High	5. Higher	5. Higher	5. Higher	5. Higher	5. Higher
S01012315: Eyemouth - Seafront Harbour	4	2. Low	1. Lower	3. Mid	4. High	3. Mid	4. High	4. High
S01012316: Eyemouth - Central	4	4. High	4. High	4. High	4. High	5. Higher	4. High	4. High
S01012317: Eyemouth - South	6	4. High	3. Mid	4. High	4. High	4. High	3. Mid	4. High
S01012318: Eyemouth - North	4	4. High	4. High	4. High	4. High	4. High	4. High	4. High
S01012320: Chirnside - West	5	5. Higher	5. Higher	4. High	5. Higher	3. Mid	3. Mid	5. Higher
S01012321: Chirnside - East	6	3. Mid	3. Mid	2. Low	3. Mid	3. Mid	3. Mid	3. Mid
S01012322: Whitsome Allanton and Hutton Area	7	3. Mid	2. Low	2. Low	2. Low	3. Mid	3. Mid	2. Low
S01012323: Foulden and Area	7	3. Mid	3. Mid	3. Mid	3. Mid	3. Mid	4. High	2. Low

Mid Berwickshire

Area	SB CPI 2017 Level	SB CPI 2018 Level	SB CPI 2019 Level	SB CPI 2020 Level	SB CPI 2021 Level	SB CPI 2022 Level	SB CPI 2023 Level
Scottish Borders	3. Mid	4. High	4. High	4. High	3. Mid	4. High	4. High
Mid Berwickshire	3. Mid	3. Mid	3. Mid	3. Mid	4. High	4. High	3. Mid

DZ2011 code and Name	SIMD2020v2 Decile	SB CPI 2017 Level	SB CPI 2018 Level	SB CPI 2019 Level	SB CPI 2020 Level	SB CPI 2021 Level	SB CPI 2022 Level	SB CPI 2023 Level
S01012323: Foulden and Area	7	3. Mid	3. Mid	3. Mid	3. Mid	3. Mid	4. High	2. Low
S01012300: Greenlaw	5	4. High	5. Higher	4. High	4. High	4. High	3. Mid	4. High
S01012301: Swinton Leithholm and Fogo Area	6	2. Low	3. Mid	3. Mid	3. Mid	4. High	4. High	3. Mid
S01012302: Cranshaws - Abbey St Bathans Area	4	3. Mid	2. Low	2. Low	3. Mid	4. High	5. Higher	3. Mid
S01012303: Westruther and Polwarth Area	7	2. Low	2. Low	2. Low	2. Low	2. Low	3. Mid	2. Low
S01012304: Gordon and Hume Area	7	2. Low	2. Low	2. Low	2. Low	2. Low	3. Mid	2. Low
S01012305: Duns - South	6	3. Mid	3. Mid	4. High	4. High	3. Mid	4. High	3. Mid
S01012306: Duns - West	4	5. Higher	4. High	4. High	5. Higher	4. High	4. High	4. High
S01012307: Duns - North	5	4. High	4. High	4. High	3. Mid	2. Low	5. Higher	3. Mid
S01012308: Duns - East	8	4. High	3. Mid	3. Mid	3. Mid	3. Mid	4. High	3. Mid
S01012319: Preston and Manderston Area	6	4. High	4. High	3. Mid	3. Mid	3. Mid	4. High	3. Mid
S01012324: Birgham and Ladykirk Area	6	3. Mid	3. Mid	3. Mid	4. High	4. High	4. High	3. Mid
S01012325: Coldstream - West	7	3. Mid	2. Low	3. Mid	3. Mid	3. Mid	5. Higher	4. High
S01012326: Coldstream - South	3	4. High	5. Higher	4. High	5. Higher	4. High	4. High	4. High
S01012327: Coldstream - East	6	4. High	4. High	3. Mid	4. High	4. High	5. Higher	4. High

Cheviot

Jedburgh and District

Area	SB CPI 2017 Level	SB CPI 2018 Level	SB CPI 2019 Level	SB CPI 2020 Level	SB CPI 2021 Level	SB CPI 2022 Level	SB CPI 2023 Level
Scottish Borders	3. Mid	4. High	4. High	4. High	3. Mid	4. High	4. High
Jedburgh and District	3. Mid	3. Mid	4. High	4. High	4. High	4. High	4. High

DZ2011 code and Name	SIMD2020v2 Decile	SB CPI 2017 Level	SB CPI 2018 Level	SB CPI 2019 Level	SB CPI 2020 Level	SB CPI 2021 Level	SB CPI 2022 Level	SB CPI 2023 Level
S01012341: Oxnam and Campdown Area	7	2. Low	2. Low	2. Low	3. Mid	3. Mid	3. Mid	3. Mid
S01012342: Ancrum and Lanton Area	6	2. Low	2. Low	3. Mid	3. Mid	2. Low	4. High	2. Low
S01012343: Roxburgh Heiton Eckford Area	7	2. Low	2. Low	2. Low	2. Low	3. Mid	4. High	2. Low
S01012346: Dryburgh Charlesfield Maxton Area	7	3. Mid	2. Low	3. Mid	3. Mid	4. High	4. High	3. Mid
S01012347: St Boswells - East	8	2. Low	3. Mid	4. High	4. High	4. High	5. Higher	3. Mid
S01012348: St Boswells - West	8	2. Low	2. Low	3. Mid	3. Mid	3. Mid	4. High	3. Mid
S01012349: Jedburgh - Howden	5	4. High	5. Higher	5. Higher	4. High	5. Higher	4. High	4. High
S01012350: Jedburgh - Doom Hill	4	5. Higher	5. Higher	5. Higher	5. Higher	4. High	3. Mid	5. Higher
S01012351: Jedburgh - East Central	4	4. High	4. High	4. High	5. Higher	5. Higher	4. High	4. High
S01012352: Jedburgh - West Central	7	4. High	4. High	4. High	5. Higher	4. High	3. Mid	5. Higher

Kelso and District

Area	SB CPI 2017 Level	SB CPI 2018 Level	SB CPI 2019 Level	SB CPI 2020 Level	SB CPI 2021 Level	SB CPI 2022 Level	SB CPI 2023 Level
Scottish Borders	3. Mid	4. High	4. High	4. High	3. Mid	4. High	4. High
Kelso and District	3. Mid	3. Mid	4. High	4. High	4. High	4. High	4. High

DZ2011 code and Name	SIMD2020v2 Decile	SB CPI 2017 Level	SB CPI 2018 Level	SB CPI 2019 Level	SB CPI 2020 Level	SB CPI 2021 Level	SB CPI 2022 Level	SB CPI 2023 Level
S01012328: Town Yetholm	5	4. High	4. High	3. Mid	4. High	4. High	2. Low	4. High
S01012329: Morebattle Hownam and Area	5	3. Mid	3. Mid	3. Mid	3. Mid	3. Mid	4. High	3. Mid
S01012330: Kelso S - Pinnaclehill	6	3. Mid	5. Higher	4. High	4. High	4. High	4. High	2. Low
S01012331: Kelso S - Maxwellheugh	9	1. Lower	1. Lower	1. Lower	1. Lower	1. Lower	4. High	1. Lower
S01012332: Smallholm Stitchill and Ednam Area	7	3. Mid	3. Mid	3. Mid	3. Mid	4. High	4. High	5. Higher
S01012333: Sprouston and Area	7	2. Low	2. Low	1. Lower	2. Low	1. Lower	3. Mid	2. Low
S01012334: Kelso N - High Croft Orchard Park	6	4. High	4. High	5. Higher	5. Higher	5. Higher	4. High	5. Higher
S01012335: Kelso N - Hendersyde Oakfield	7	3. Mid	3. Mid	3. Mid	2. Low	3. Mid	4. High	3. Mid
S01012336: Kelso N - Abbotseat	8	3. Mid	3. Mid	3. Mid	3. Mid	4. High	5. Higher	4. High
S01012337: Kelso N - Poynder Park	3	4. High	4. High	5. Higher	5. Higher	5. Higher	4. High	5. Higher
S01012338: Kelso S - Bownmont and Edenside	5	3. Mid	4. High	4. High	4. High	5. Higher	4. High	5. Higher
S01012339: Kelso S - Abbey	5	2. Low	2. Low	3. Mid	3. Mid	3. Mid	5. Higher	3. Mid
S01012340: Kelso S - Broomlands	6	4. High	4. High	4. High	5. Higher	4. High	5. Higher	4. High

Eildon

Galashiels and District

Area	SB CPI 2017 Level	SB CPI 2018 Level	SB CPI 2019 Level	SB CPI 2020 Level	SB CPI 2021 Level	SB CPI 2022 Level	SB CPI 2023 Level
Scottish Borders	3. Mid	4. High	4. High	4. High	3. Mid	4. High	4. High
Galashiels and District	4. High	4. High	4. High	4. High	4. High	4. High	5. Higher

DZ2011 code and Name	SIMD2020v2 Decile	SB CPI 2017 Level	SB CPI 2018 Level	SB CPI 2019 Level	SB CPI 2020 Level	SB CPI 2021 Level	SB CPI 2022 Level	SB CPI 2023 Level
S01012271: Heriot - Fountainhall - Stow Landward	6	2. Low	3. Mid	3. Mid	4. High	4. High	4. High	4. High
S01012272: Stow	7	1. Lower	1. Lower	2. Low	2. Low	3. Mid	3. Mid	3. Mid
S01012274: Galashiels - N - Halliburton	6	2. Low	3. Mid	3. Mid	3. Mid	3. Mid	3. Mid	4. High
S01012275: Galashiels - N - Town Centre	3	4. High	5. Higher	5. Higher	5. Higher	5. Higher	4. High	5. Higher
S01012276: Galashiels - N - Windyknowe	5	1. Lower	2. Low	2. Low	2. Low	2. Low	3. Mid	2. Low
S01012277: Galashiels - N - Wood St	5	5. Higher	5. Higher	5. Higher	5. Higher	4. High	5. Higher	5. Higher
S01012278: Galashiels - W - Old Town	4	4. High	5. Higher	4. High	4. High	3. Mid	3. Mid	4. High
S01012279: Galashiels - W - Thistle St	3	4. High	5. Higher	4. High	5. Higher	5. Higher	4. High	5. Higher
S01012280: Galashiels - W - Balmoral Rd	4	4. High	4. High	4. High	5. Higher	5. Higher	4. High	5. Higher
S01012281: Galashiels - W - Balmoral Pl	5	4. High	4. High	4. High	4. High	4. High	4. High	5. Higher
S01012282: Galashiels - S - Netherdale	8	2. Low	1. Lower	2. Low	2. Low	2. Low	2. Low	2. Low
S01012283: Galashiels - S - St Peters Sch	5	4. High	4. High	4. High	4. High	4. High	4. High	4. High
S01012284: Galashiels - S - Huddersfield	3	5. Higher	5. Higher	5. Higher	4. High	4. High	5. Higher	5. Higher
S01012285: Galashiels - S - Glenfield	7	3. Mid	1. Lower	3. Mid	3. Mid	2. Low	3. Mid	1. Lower
S01012286: Gala - Langlee - East	4	4. High	4. High	4. High	5. Higher	4. High	3. Mid	5. Higher
S01012287: Gala - Langlee - Central	1	5. Higher	5. Higher	5. Higher	5. Higher	5. Higher	5. Higher	5. Higher
S01012288: Gala - Langlee - West	2	5. Higher	5. Higher	5. Higher	5. Higher	5. Higher	5. Higher	5. Higher

Leaderdale and Melrose

Area	SB CPI 2017 Level	SB CPI 2018 Level	SB CPI 2019 Level	SB CPI 2020 Level	SB CPI 2021 Level	SB CPI 2022 Level	SB CPI 2023 Level
Scottish Borders	3. Mid	4. High	4. High	4. High	3. Mid	4. High	4. High
Leaderdale and Melrose	2. Low	2. Low	2. Low	2. Low	3. Mid	3. Mid	2. Low

DZ2011 code and Name	SIMD2020v2 Decile	SB CPI 2017 Level	SB CPI 2018 Level	SB CPI 2019 Level	SB CPI 2020 Level	SB CPI 2021 Level	SB CPI 2022 Level	SB CPI 2023 Level
S01012268: Earlston and Melrose Landward	8	3. Mid	3. Mid	3. Mid	3. Mid	3. Mid	3. Mid	4. High
S01012269: Earlston - West	8	2. Low	2. Low	3. Mid	2. Low	2. Low	2. Low	1. Lower
S01012270: Earlston - East	6	3. Mid	4. High	4. High	3. Mid	3. Mid	3. Mid	4. High
S01012289: Gattonside - Darnick - Chiefswood	8	2. Low	1. Lower	1. Lower	1. Lower	2. Low	3. Mid	1. Lower
S01012290: Melrose - Newstead	6	3. Mid	3. Mid	3. Mid	3. Mid	3. Mid	4. High	4. High
S01012291: Melrose - Dingleton Hill	9	2. Low	2. Low	2. Low	2. Low	2. Low	3. Mid	2. Low
S01012292: Melrose - High Street	10	1. Lower	1. Lower	2. Low	2. Low	2. Low	4. High	2. Low
S01012293: Tweedbank - West	6	3. Mid	3. Mid	3. Mid	4. High	3. Mid	2. Low	4. High
S01012294: Tweedbank - North	5	4. High	4. High	4. High	3. Mid	4. High	3. Mid	3. Mid
S01012295: Tweedbank - East	7	3. Mid	2. Low	2. Low	2. Low	2. Low	4. High	2. Low
S01012296: Lauder - South	10	2. Low	2. Low	2. Low	2. Low	2. Low	3. Mid	1. Lower
S01012297: Blainslie and Legerwood	8	2. Low	1. Lower	1. Lower	2. Low	1. Lower	4. High	1. Lower
S01012298: Lauder - North	7	3. Mid	3. Mid	2. Low	3. Mid	2. Low	4. High	2. Low
S01012299: Oxtou and Area	7	2. Low	2. Low	2. Low	2. Low	3. Mid	4. High	2. Low

Selkirkshire

Area	SB CPI 2017 Level	SB CPI 2018 Level	SB CPI 2019 Level	SB CPI 2020 Level	SB CPI 2021 Level	SB CPI 2022 Level	SB CPI 2023 Level
Scottish Borders	3. Mid	4. High	4. High	4. High	3. Mid	4. High	4. High
Selkirkshire	4. High	4. High	4. High	4. High	4. High	4. High	4. High

DZ2011 code and Name	SIMD2020v2 Decile	SB CPI 2017 Level	SB CPI 2018 Level	SB CPI 2019 Level	SB CPI 2020 Level	SB CPI 2021 Level	SB CPI 2022 Level	SB CPI 2023 Level
S01012344: Newtown St Boswells - South	5	3. Mid	4. High	4. High	5. Higher	4. High	3. Mid	5. Higher
S01012345: Newtown St Boswells - North	7	3. Mid	4. High	4. High	5. Higher	4. High	4. High	4. High
S01012376: Ashkirk Lilliesleaf and Midlem Area	8	2. Low	3. Mid	2. Low	2. Low	3. Mid	4. High	3. Mid
S01012377: Bowden and Lindean Area	7	1. Lower	2. Low	2. Low	2. Low	2. Low	4. High	2. Low
S01012378: Ettrick Water and Bowhill Area	6	3. Mid	3. Mid	2. Low	2. Low	1. Lower	4. High	2. Low
S01012379: Yarrow Water and Sunderland Area	6	2. Low	3. Mid	2. Low	4. High	4. High	4. High	3. Mid
S01012380: Selkirk - Shawburn	5	4. High	4. High	4. High	4. High	5. Higher	5. Higher	5. Higher
S01012381: Selkirk - Town Centre	5	3. Mid	4. High	4. High	5. Higher	4. High	4. High	5. Higher
S01012382: Selkirk - Hillside Terrace	8	2. Low	2. Low	2. Low	3. Mid	3. Mid	3. Mid	3. Mid
S01012383: Selkirk - Shawpark	7	4. High	4. High	4. High	3. Mid	3. Mid	4. High	4. High
S01012384: Selkirk - Dunsdale	6	3. Mid	2. Low	4. High	4. High	4. High	5. Higher	3. Mid
S01012385: Selkirk - Heatherlie	6	3. Mid	4. High	2. Low	2. Low	3. Mid	5. Higher	3. Mid
S01012386: Selkirk - Bannerfield	2	5. Higher	5. Higher	5. Higher	5. Higher	5. Higher	5. Higher	5. Higher

Teviot and Liddesdale

Hawick and Denholm

Area	SB CPI 2017 Level	SB CPI 2018 Level	SB CPI 2019 Level	SB CPI 2020 Level	SB CPI 2021 Level	SB CPI 2022 Level	SB CPI 2023 Level
Scottish Borders	3. Mid	4. High	4. High	4. High	3. Mid	4. High	4. High
Hawick and Denholm	4. High	5. Higher	5. Higher	5. Higher	4. High	5. Higher	5. Higher

DZ2011 code and Name	SIMD2020v2 Decile	SB CPI 2017 Level	SB CPI 2018 Level	SB CPI 2019 Level	SB CPI 2020 Level	SB CPI 2021 Level	SB CPI 2022 Level	SB CPI 2023 Level
S01012356: Denholm	8	2. Low	3. Mid	3. Mid	3. Mid	3. Mid	4. High	4. High
S01012357: Minto Cauldmill and Boonraw Area	7	2. Low	3. Mid	1. Lower	1. Lower	1. Lower	4. High	2. Low
S01012358: Bonchester Bridge and Chesters Area	6	3. Mid	3. Mid	3. Mid	4. High	3. Mid	5. Higher	3. Mid
S01012359: Hawick - Burnfoot - South East	1	5. Higher	5. Higher	5. Higher	5. Higher	5. Higher	5. Higher	5. Higher
S01012360: Hawick - Burnfoot - Central	1	5. Higher	5. Higher	5. Higher	5. Higher	5. Higher	5. Higher	5. Higher
S01012361: Hawick - Burnfoot - West	2	5. Higher	5. Higher	5. Higher	5. Higher	5. Higher	4. High	5. Higher
S01012362: Hawick - Burnfoot - North	2	5. Higher	5. Higher	5. Higher	5. Higher	5. Higher	5. Higher	5. Higher
S01012368: Hawick West End - Wilton Dean	7	2. Low	2. Low	3. Mid	3. Mid	3. Mid	4. High	2. Low
S01012372: Hawick North - Commercial Road	2	4. High	5. Higher	5. Higher	5. Higher	5. Higher	5. Higher	5. Higher
S01012373: Hawick North - Wilton Hill	5	4. High	3. Mid	4. High	3. Mid	3. Mid	4. High	2. Low
S01012374: Hawick North - Stirtches	5	3. Mid	3. Mid	3. Mid	4. High	3. Mid	3. Mid	4. High
S01012375: Hawick North - Silverbuthall	4	4. High	4. High	4. High	3. Mid	4. High	5. Higher	5. Higher

Hawick and Hermitage

Area		SB CPI 2017 Level	SB CPI 2018 Level	SB CPI 2019 Level	SB CPI 2020 Level	SB CPI 2021 Level	SB CPI 2022 Level	SB CPI 2023 Level
Scottish Borders		3. Mid	4. High	4. High	4. High	3. Mid	4. High	4. High
Hawick and Hermitage		4. High	4. High	4. High	4. High	4. High	4. High	4. High
DZ2011 code and Name	SIMD2020v2 Decile	SB CPI 2017 Level	SB CPI 2018 Level	SB CPI 2019 Level	SB CPI 2020 Level	SB CPI 2021 Level	SB CPI 2022 Level	SB CPI 2023 Level
S01012354: Newcastleton	6	3. Mid	5. Higher	4. High	4. High	4. High	4. High	5. Higher
S01012355: Teviothead and Hermitage Area	5	3. Mid	3. Mid	4. High	4. High	3. Mid	4. High	3. Mid
S01012363: Hawick Central - Wellogate	2	4. High	4. High	5. Higher	4. High	4. High	5. Higher	5. Higher
S01012364: Hawick Central - Trinity	3	4. High	4. High	5. Higher	5. Higher	4. High	4. High	3. Mid
S01012365: Hawick Central - Millers Knowes	8	2. Low	1. Lower	1. Lower	2. Low	1. Lower	3. Mid	2. Low
S01012366: Hawick Central - Town Centre	4	5. Higher	5. Higher	5. Higher	5. Higher	5. Higher	4. High	5. Higher
S01012367: Hawick Central - Weensland	6	5. Higher	4. High	4. High	4. High	4. High	4. High	5. Higher
S01012369: Hawick West End - Crumhaughill and Parkdail	8	2. Low	2. Low	2. Low	2. Low	2. Low	4. High	2. Low
S01012370: Hawick Central - Drumlanrig	4	2. Low	3. Mid	3. Mid	4. High	4. High	4. High	4. High
S01012371: Hawick West End - Crumhaugh	4	4. High	4. High	4. High	5. Higher	3. Mid	5. Higher	4. High

Tweeddale

Tweeddale East

Area		SB CPI 2017 Level	SB CPI 2018 Level	SB CPI 2019 Level	SB CPI 2020 Level	SB CPI 2021 Level	SB CPI 2022 Level	SB CPI 2023 Level
Scottish Borders		3. Mid	4. High	4. High	4. High	3. Mid	4. High	4. High
Tweeddale East		2. Low	2. Low	2. Low	2. Low	3. Mid	3. Mid	2. Low
DZ2011 code and Name	SIMD2020v2 Decile	SB CPI 2017 Level	SB CPI 2018 Level	SB CPI 2019 Level	SB CPI 2020 Level	SB CPI 2021 Level	SB CPI 2022 Level	SB CPI 2023 Level
S01012256: Peebles - S - Calvalry Park	9	2. Low	1. Lower	2. Low	2. Low	2. Low	2. Low	2. Low
S01012257: Peebles - S - Gallow Hill	7	3. Mid	3. Mid	2. Low	3. Mid	3. Mid	3. Mid	2. Low
S01012258: Peebles - S - Edderston Rd	10	1. Lower	1. Lower	1. Lower	1. Lower	1. Lower	3. Mid	1. Lower
S01012259: Peebles - S - Caledonian-Springhill	10	1. Lower	1. Lower	1. Lower	1. Lower	1. Lower	2. Low	1. Lower
S01012260: Peebles - S - Victoria Park	7	3. Mid	3. Mid	2. Low	3. Mid	3. Mid	3. Mid	2. Low
S01012261: Cardrona	8	1. Lower	2. Low	2. Low	2. Low	2. Low	3. Mid	2. Low
S01012262: Tweeddale East Landward	6	2. Low	2. Low	2. Low	2. Low	2. Low	4. High	2. Low
S01012263: Walkerburn	4	4. High	4. High	4. High	4. High	3. Mid	3. Mid	5. Higher
S01012264: Innerleithen - North	8	1. Lower	2. Low	2. Low	2. Low	2. Low	3. Mid	2. Low
S01012265: Innerleithen - East	5	4. High	4. High	4. High	4. High	4. High	3. Mid	4. High
S01012266: Innerleithen - South	7	3. Mid	3. Mid	2. Low	3. Mid	4. High	2. Low	3. Mid
S01012267: Innerleithen - West	10	1. Lower	2. Low	2. Low	2. Low	2. Low	2. Low	1. Lower
S01012273: Clovenfords and Area	9	1. Lower	1. Lower	2. Low	2. Low	2. Low	3. Mid	2. Low

Tweeddale West

Area		SB CPI 2017 Level	SB CPI 2018 Level	SB CPI 2019 Level	SB CPI 2020 Level	SB CPI 2021 Level	SB CPI 2022 Level	SB CPI 2023 Level
Scottish Borders		3. Mid	4. High	4. High	4. High	3. Mid	4. High	4. High
Tweeddale West		2. Low	2. Low	2. Low	3. Mid	3. Mid	3. Mid	3. Mid
DZ2011 code and Name	SIMD2020v2 Decile	SB CPI 2017 Level	SB CPI 2018 Level	SB CPI 2019 Level	SB CPI 2020 Level	SB CPI 2021 Level	SB CPI 2022 Level	SB CPI 2023 Level
S01012244: Carlops Romannobridge	6	1. Lower	1. Lower	1. Lower	1. Lower	1. Lower	2. Low	1. Lower
S01012245: West Linton - Lower	9	1. Lower	1. Lower	1. Lower	2. Low	1. Lower	3. Mid	1. Lower
S01012246: West Linton - Upper	9	2. Low	2. Low	2. Low	2. Low	2. Low	3. Mid	2. Low
S01012247: Eddleston and Area	7	2. Low	2. Low	2. Low	2. Low	1. Lower	3. Mid	3. Mid
S01012248: Stobo - Blyth Bridge - Skirling	7	3. Mid	4. High	2. Low	3. Mid	2. Low	3. Mid	2. Low
S01012249: Broughton and Upper Tweed	6	3. Mid	3. Mid	3. Mid	2. Low	2. Low	1. Lower	2. Low
S01012250: Glentress and Manor Valley	8	3. Mid	2. Low	2. Low	2. Low	2. Low	3. Mid	3. Mid
S01012251: Peebles - N - Connor St	4	4. High	4. High	5. Higher	5. Higher	4. High	4. High	5. Higher
S01012252: Peebles North - Dalatho	6	3. Mid	3. Mid	3. Mid	4. High	2. Low	2. Low	3. Mid
S01012253: Peebles - N - Cuddyside	6	2. Low	3. Mid	3. Mid	3. Mid	3. Mid	3. Mid	3. Mid
S01012254: Peebles - N - March St	9	2. Low	3. Mid	2. Low	2. Low	2. Low	3. Mid	3. Mid
S01012255: Peebles - N - Eastgate	8	3. Mid	2. Low	2. Low	2. Low	2. Low	2. Low	2. Low