

Townscape and Setting

- Site Layout
- Phasing
- Design Principles
- Internal Design
- Community Benefits



The Scottish Borders Council are committed to delivering an exemplar new learning environment for Peebles and the wider Tweeddale learning estate.

Educational provision in the Scottish Borders is going through a significant transformation.

New education provision including the High Schools at Eyemouth, Earlston, Berwickshire (Duns) and Kelso have enabled significant benefit in these communities. Alongside this is the recently completed 3-18 campus in Jedburgh.

Alongside this, investment in our early years, primary and facilities for pupils with support needs has delivered excellent facilities with examples such as Peebles Primary, West Linton Primary, Langlee Primary (Galashiels), Broomlands Primary (Kelso) and Leader Valley in Earleston.

Scottish Borders Council are committed to continuation of this major investment with new projects including Peebles High School, Galashiels High School, Hawick High School and Selkirk High School.

The requirement for a investment in Peebles High School has been accelerated due to a fire in 2019 which resulted in parts of the school being unstable and temporary measures having to be introduced including temporary classrooms in portacabins.

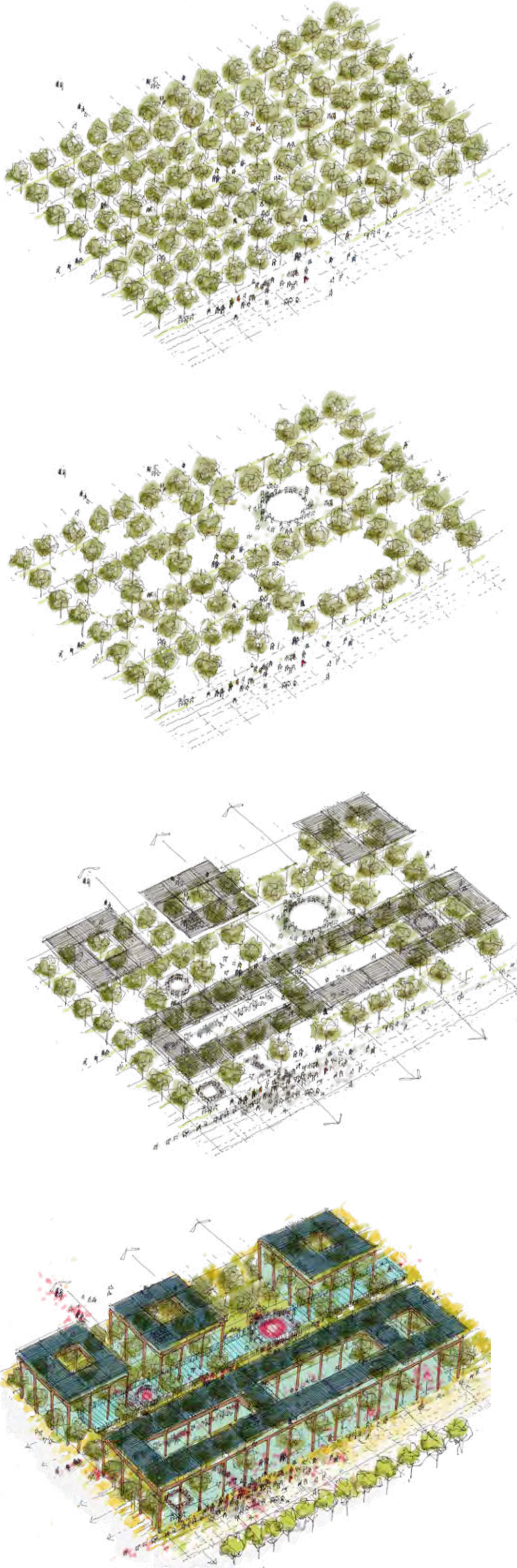
- excellence
 - ambition
 - aspiration
 - inclusion
 - attain
 - achieve
 - participate
 - supported
 - social wellbeing
 - care
 - lifestyle
 - innovation
 - activity
- creativity
 - connectivity
 - youth facilities
 - resource
 - talents
 - abilities
 - skills
 - community space
 - heritage
 - culture
 - economy
 - employment
 - enterprise



- Townscape and Setting
- Site Layout
- Phasing
- Design Principles
- Internal Design
- Community Benefits

3

Orchard of Learning



Site Plan

Townscape and Setting

Site Layout

Phasing

Design Principles

Internal Design

Community Benefits

4



Townscape and Setting

Site Layout

Phasing

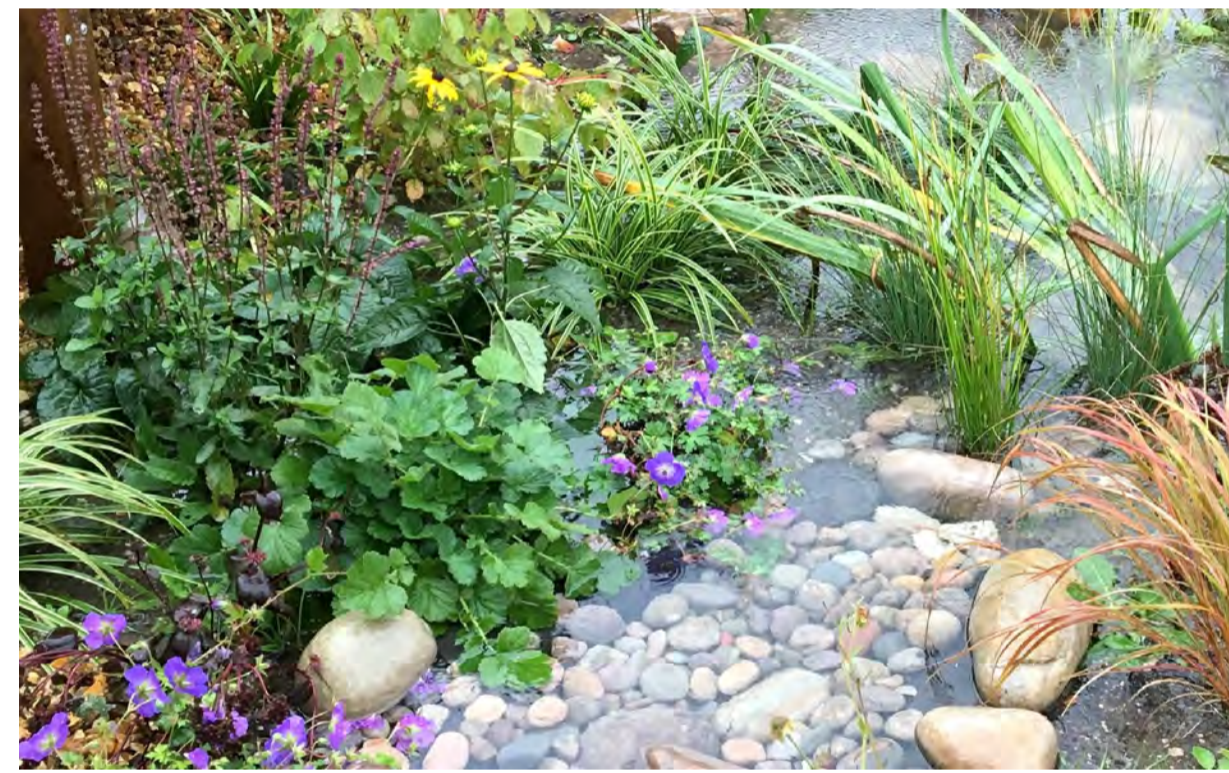
Design Principles

Internal Design

Community Benefits



Formal Tree-lined Avenue



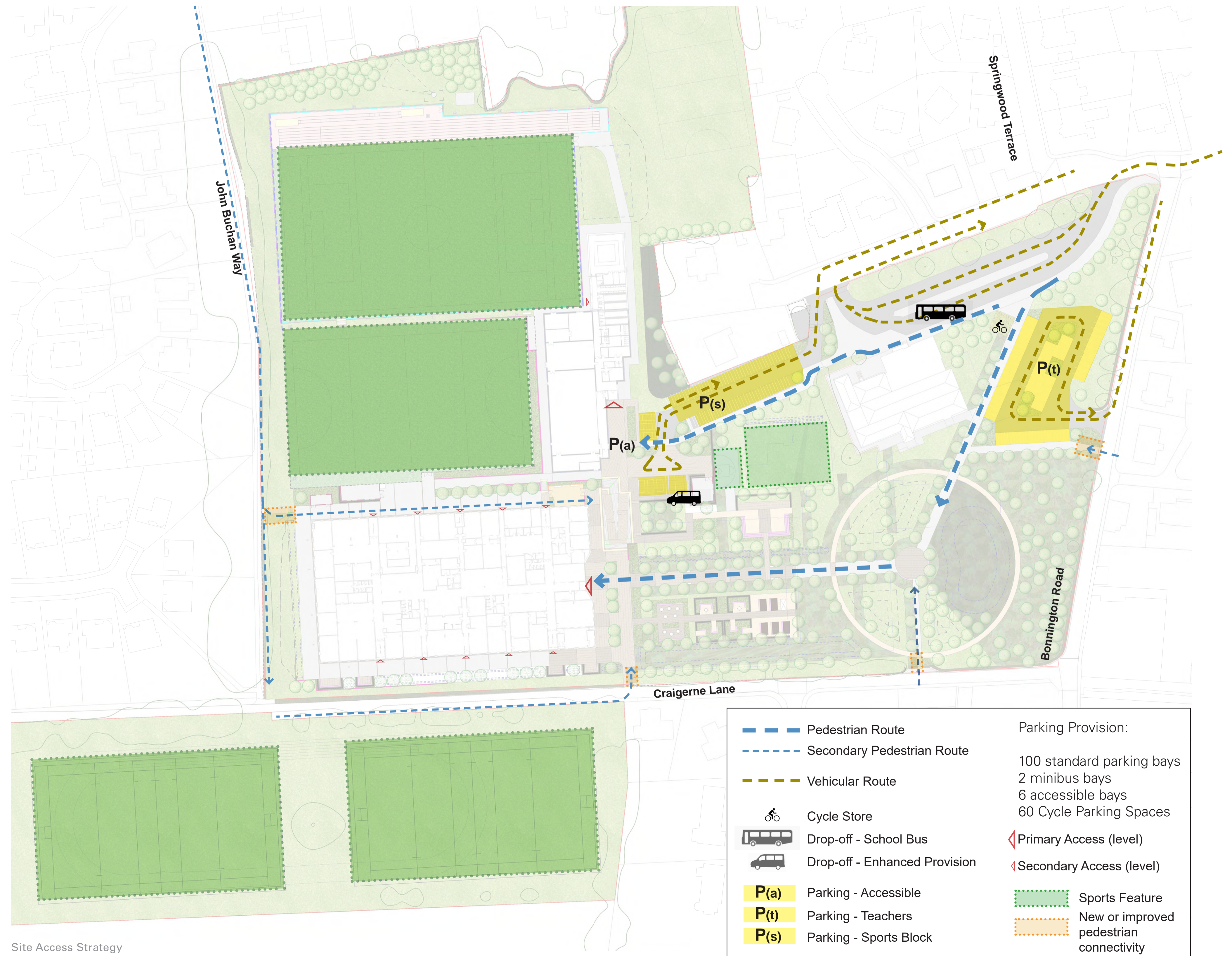
Rain Gardens



Pupil Allotments



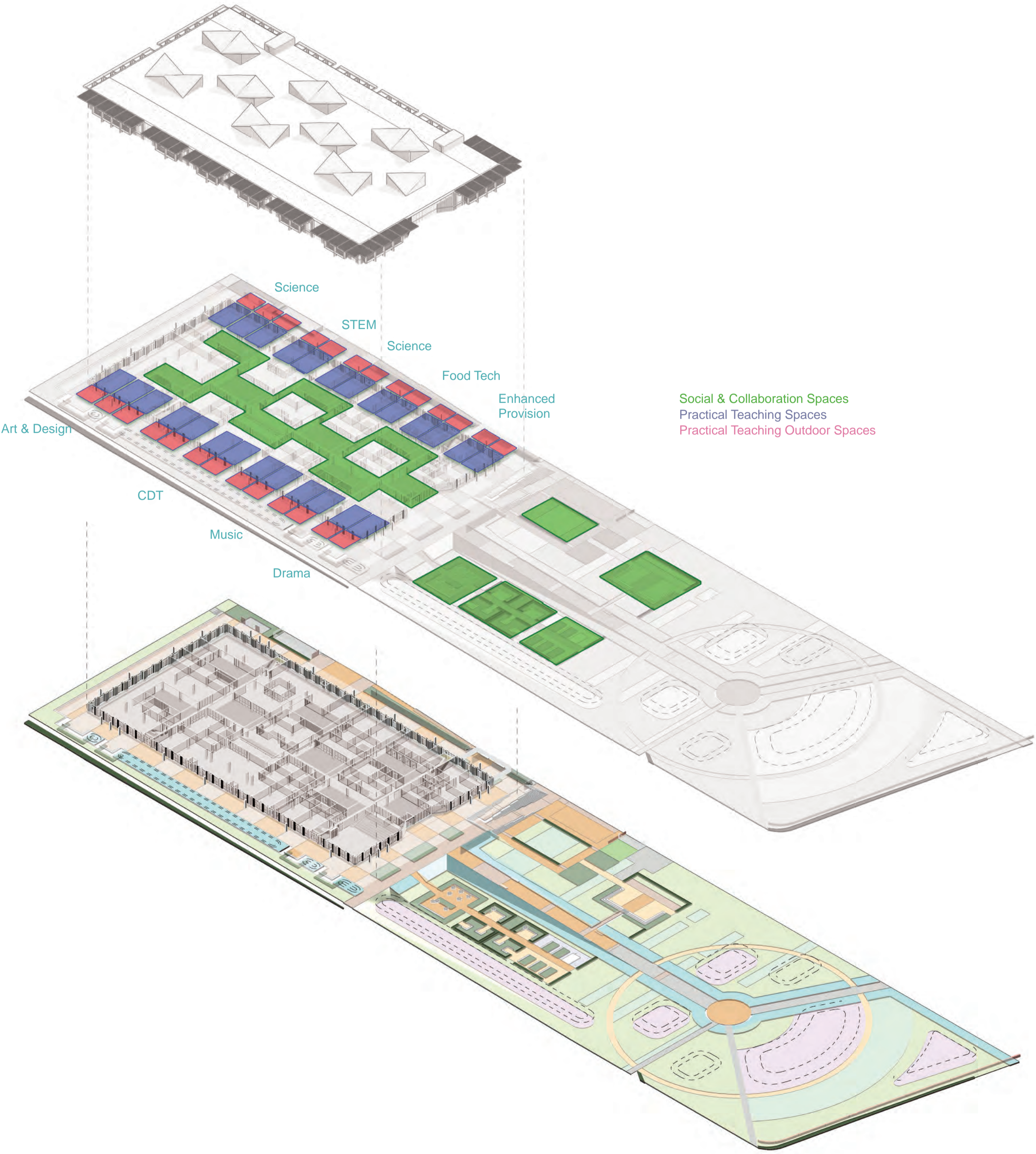
Sports Facilities



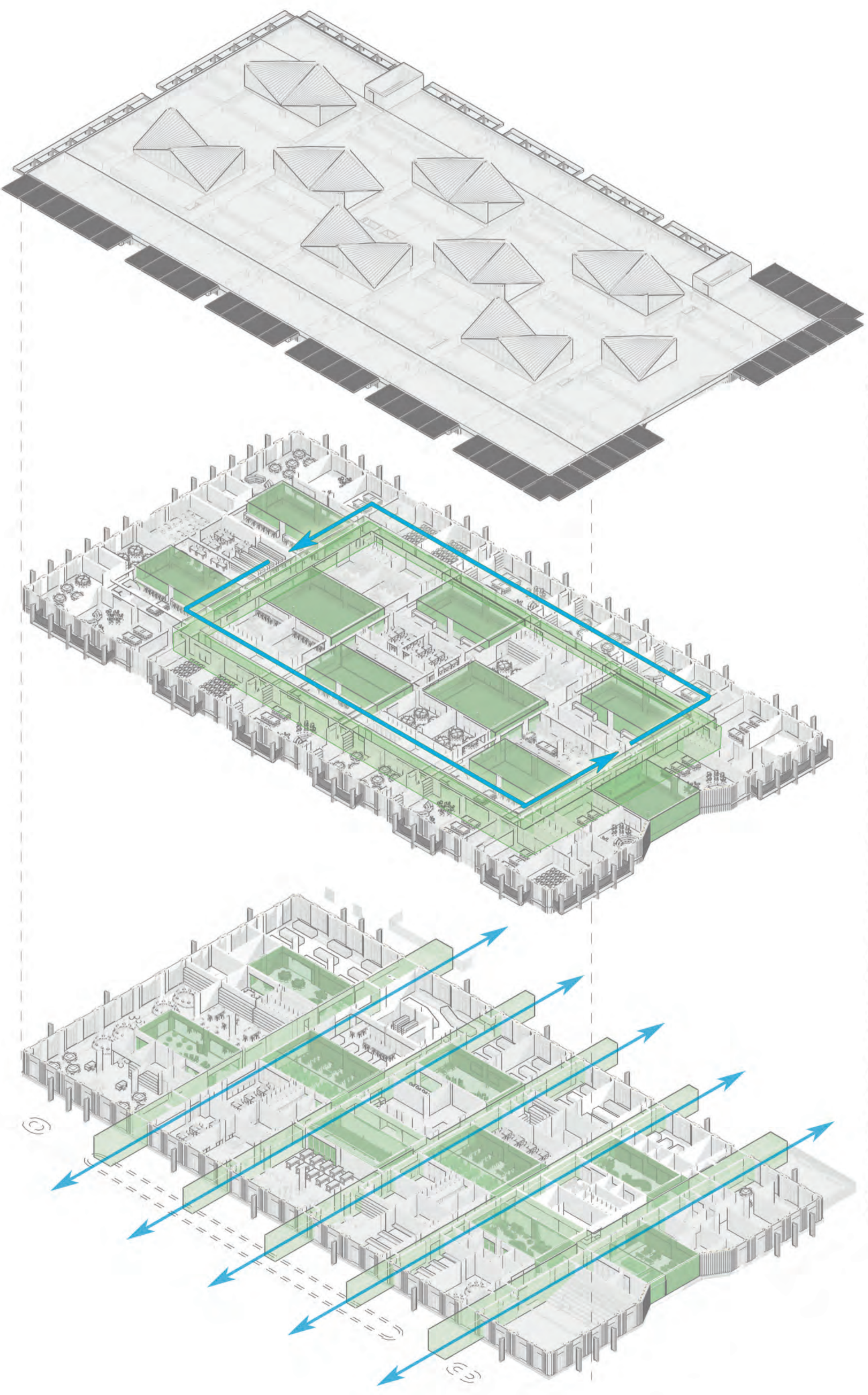
Site Access Strategy

- Townscape and Setting
- Site Layout
- Phasing
- Design Principles**
- Internal Design
- Community Benefits

6

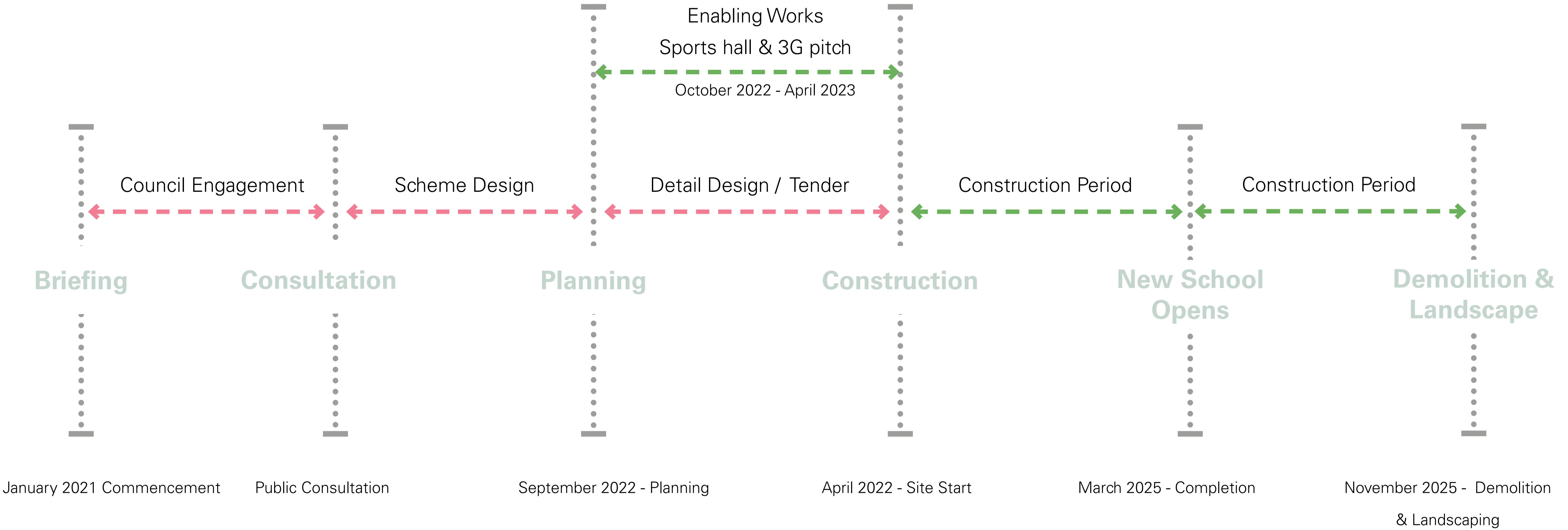


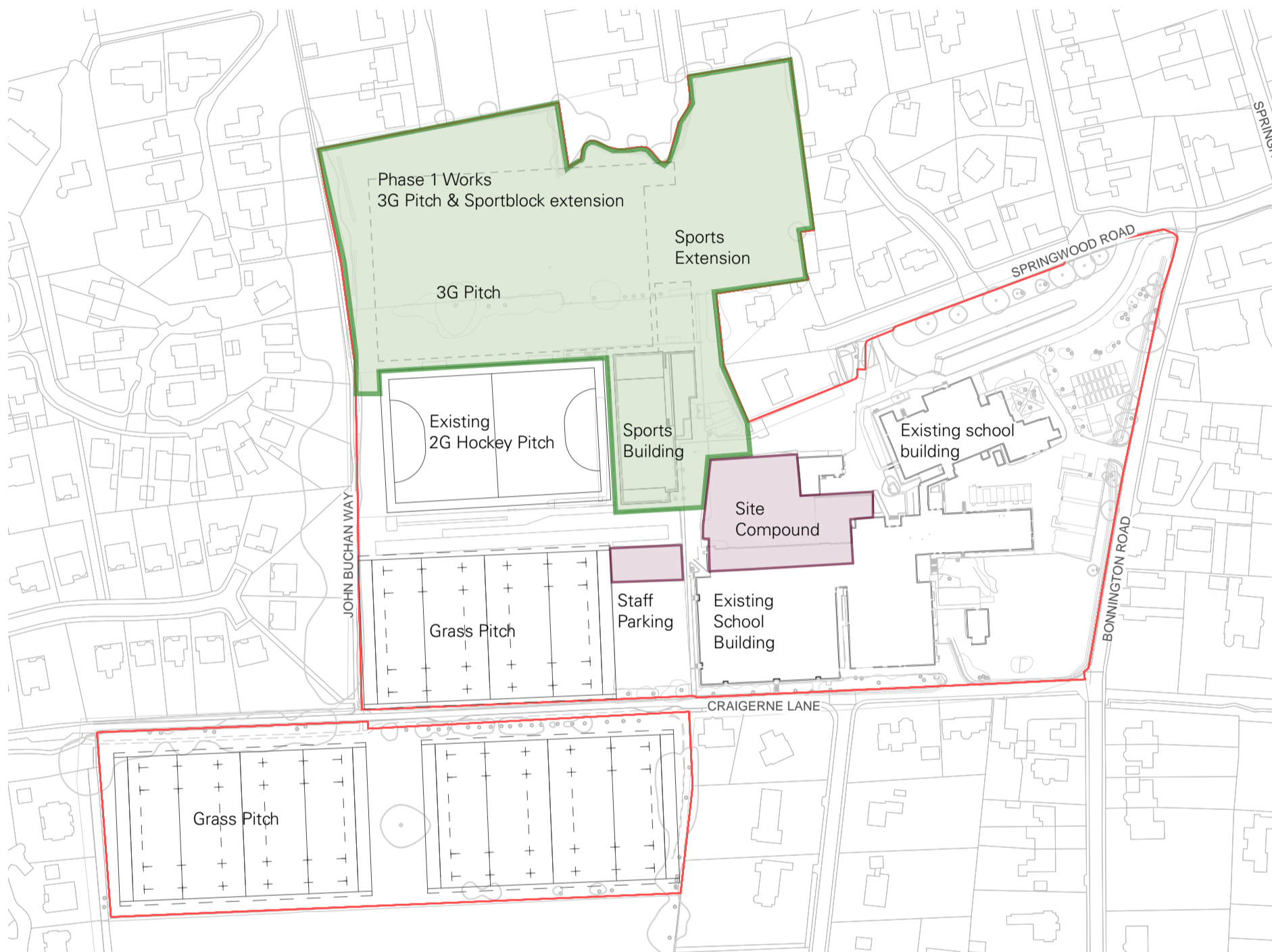
Learning Landscape



Wayfinding Strategy

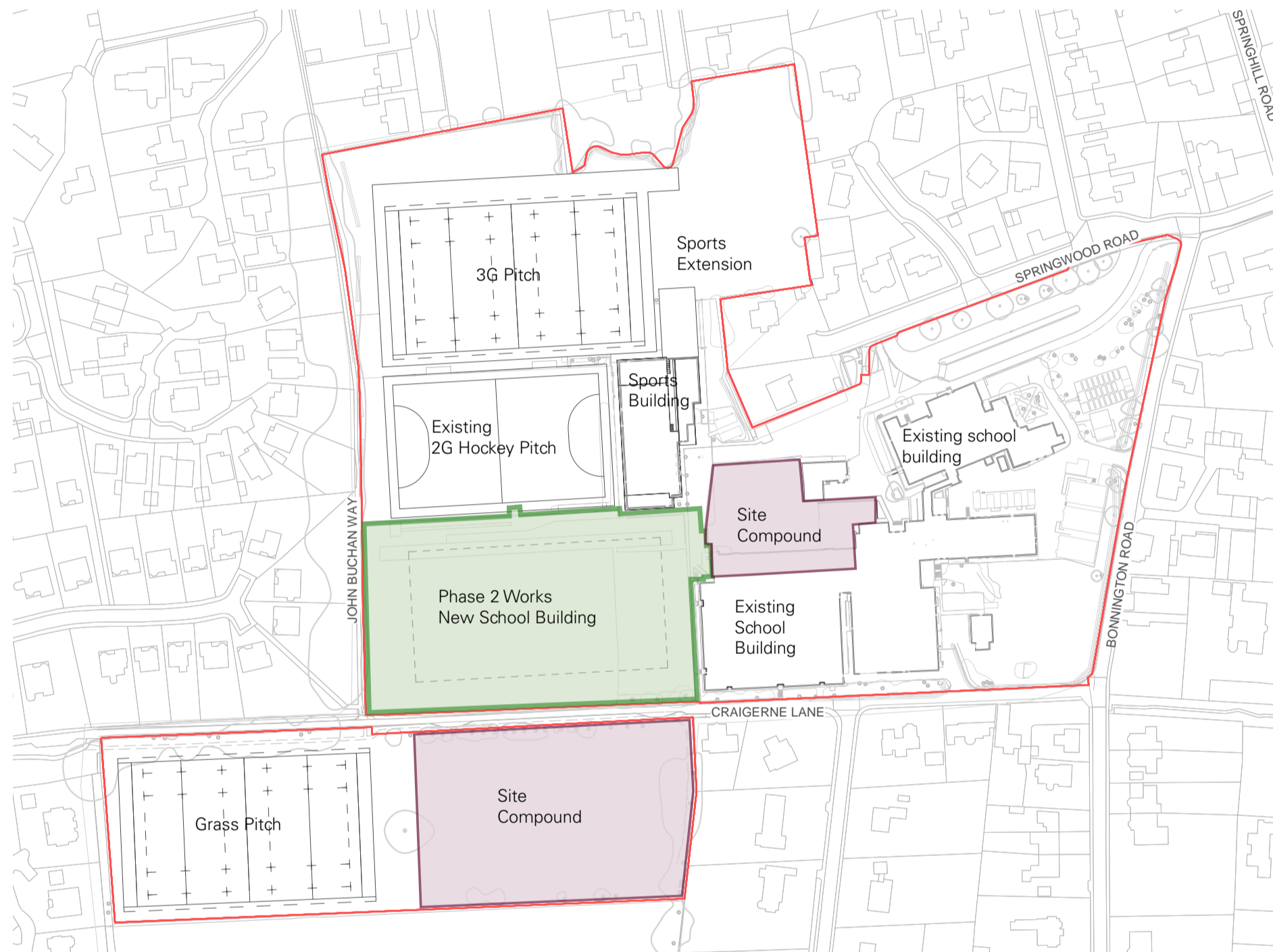
- Townscape and Setting
- Site Layout
- Phasing
- Design Principles
- Internal Design
- Community Benefits





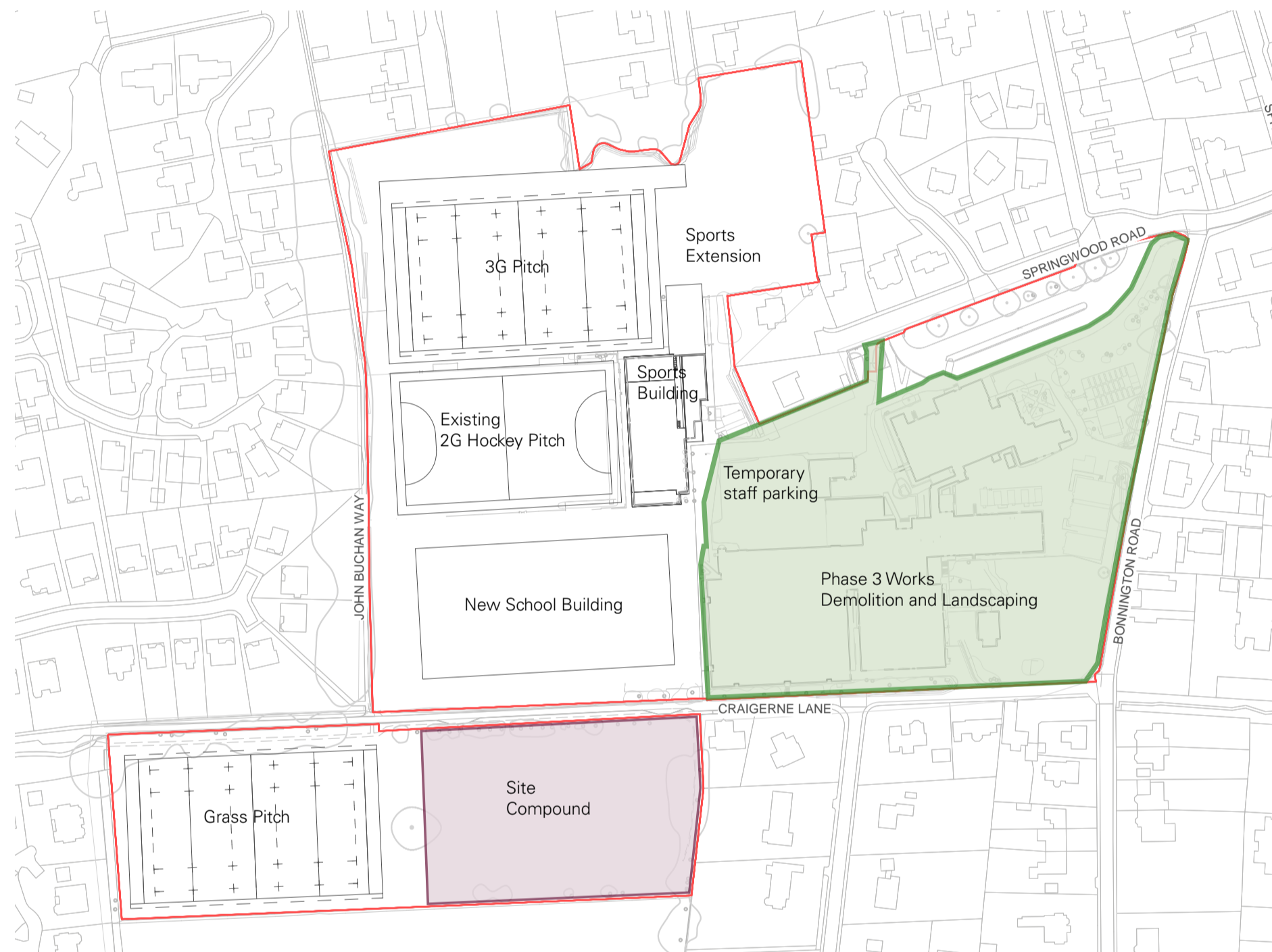
Phase 1 Works
Sports Block Extension
October 2022 - April 2023

- Establishment of site compound.
- Tree Felling
- New Gymnasium / Dance Studio
- Additional changing facilities
- Replacement 6 lane running track
- Replacement Long jump
- New All Weather Pitch



Phase 2 Works
New School building
April 2023 - March 25

- Establishment of full site compound
- Main construction works to complete the new school facility.
- Safe Access maintained for the Pupils, and community.



Phase 3 Works
Demolition and Landscaping
March 25 - November 25

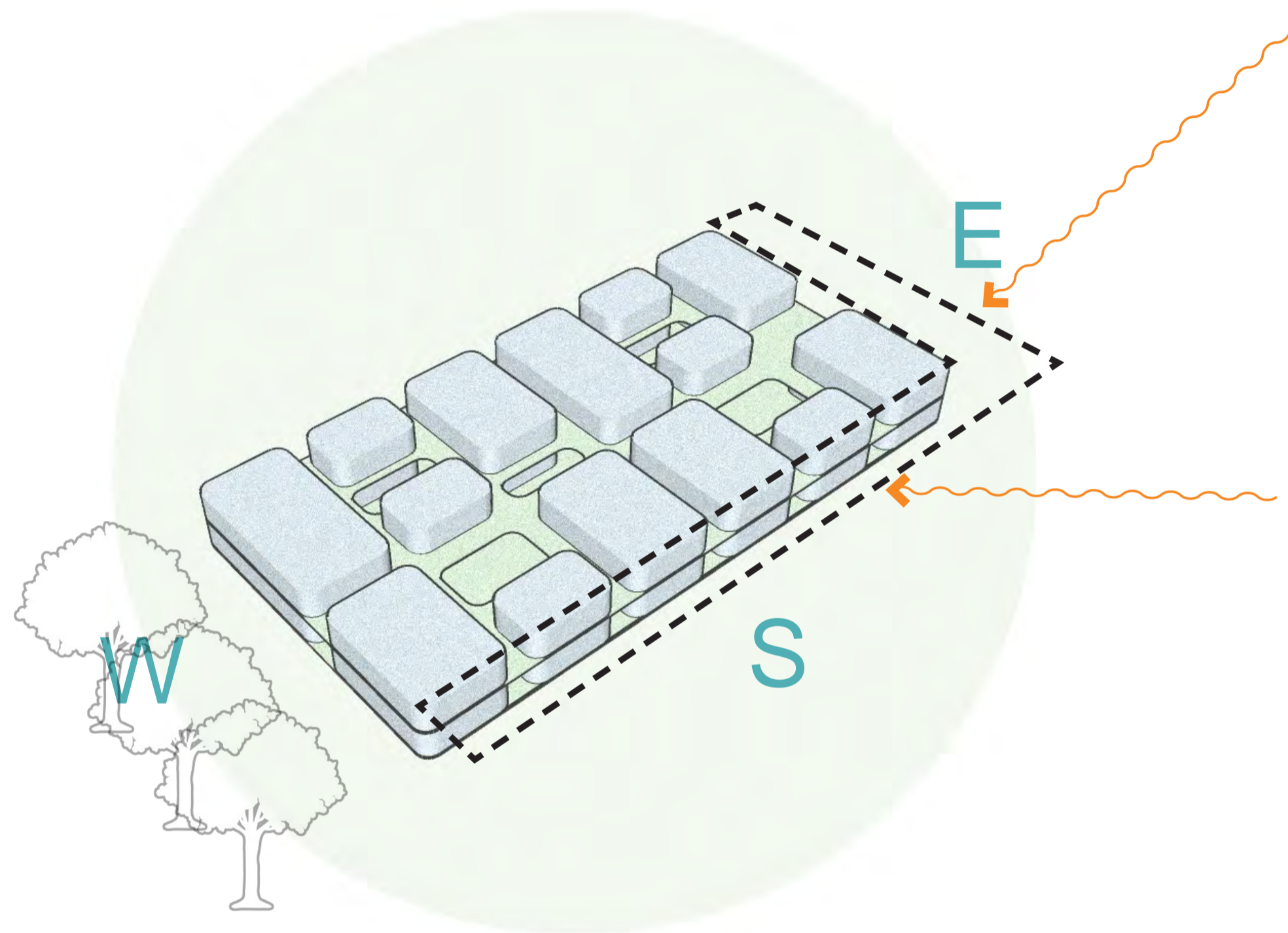
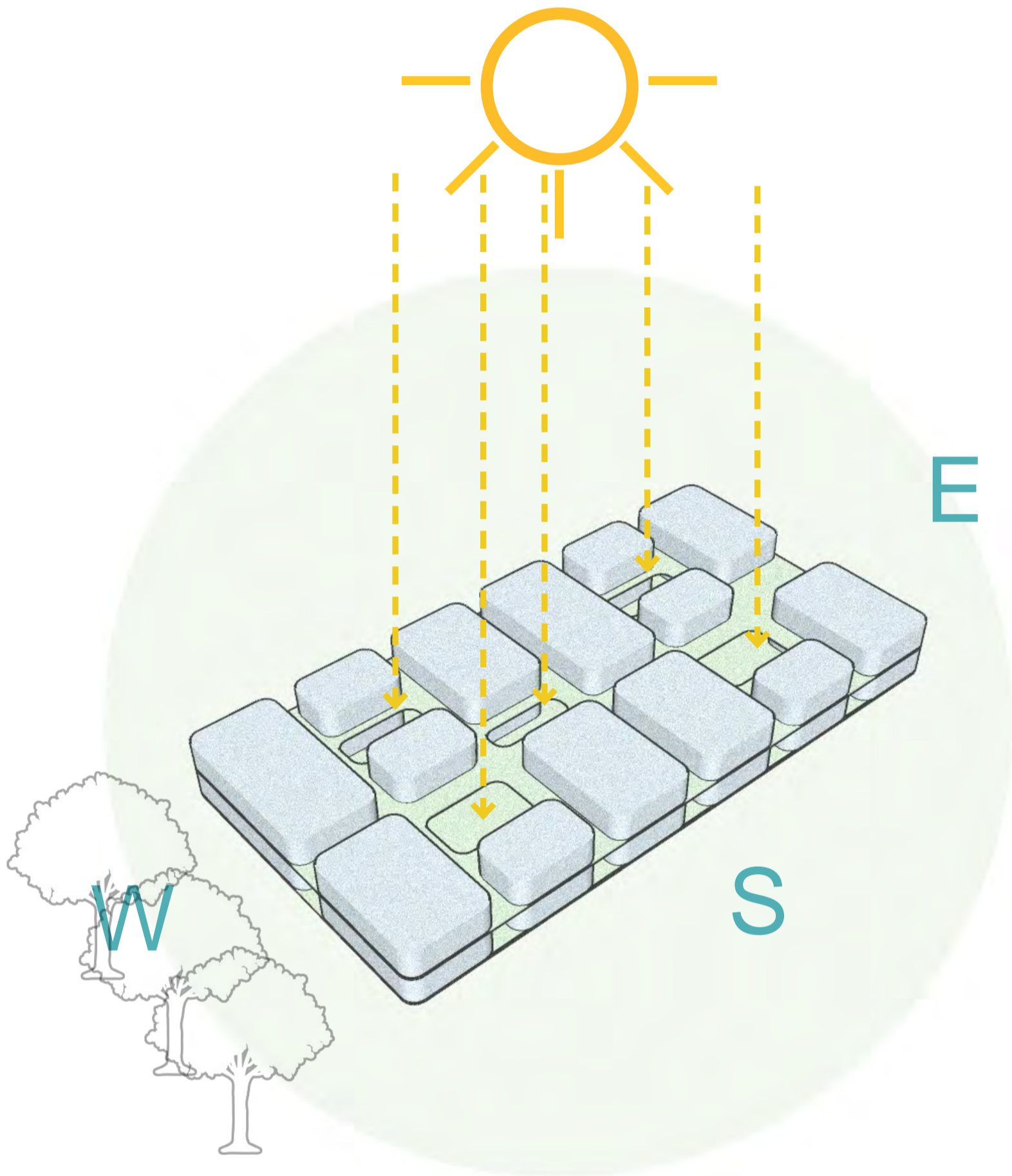
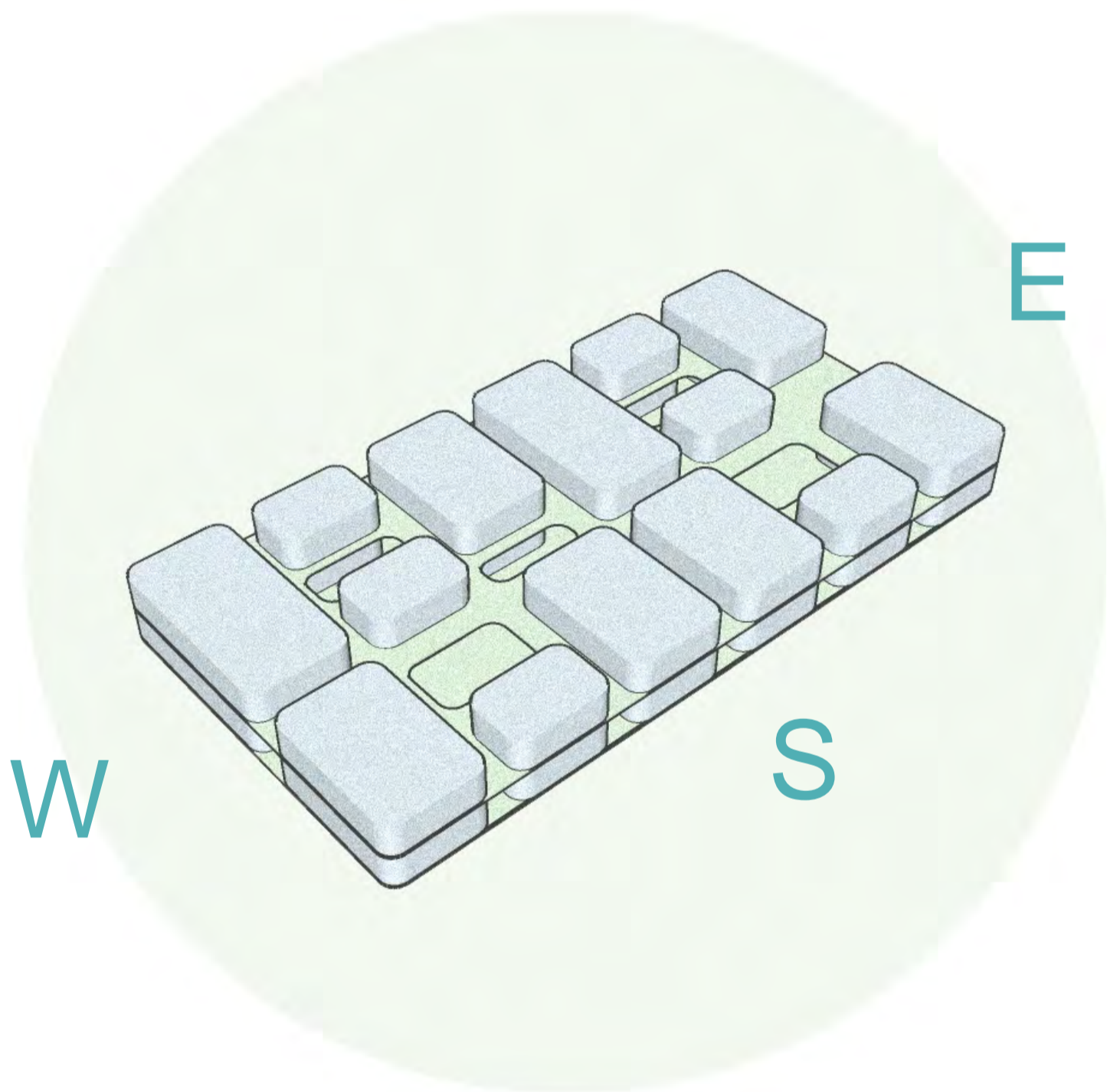
- New Facility Open to the Pupils
- Demolition of Existing School
- Completion of Landscaping, Paths and Carparks.

- Townscape and Setting
- Site Layout
- Phasing
- Design Principles**
- Internal Design
- Community Benefits

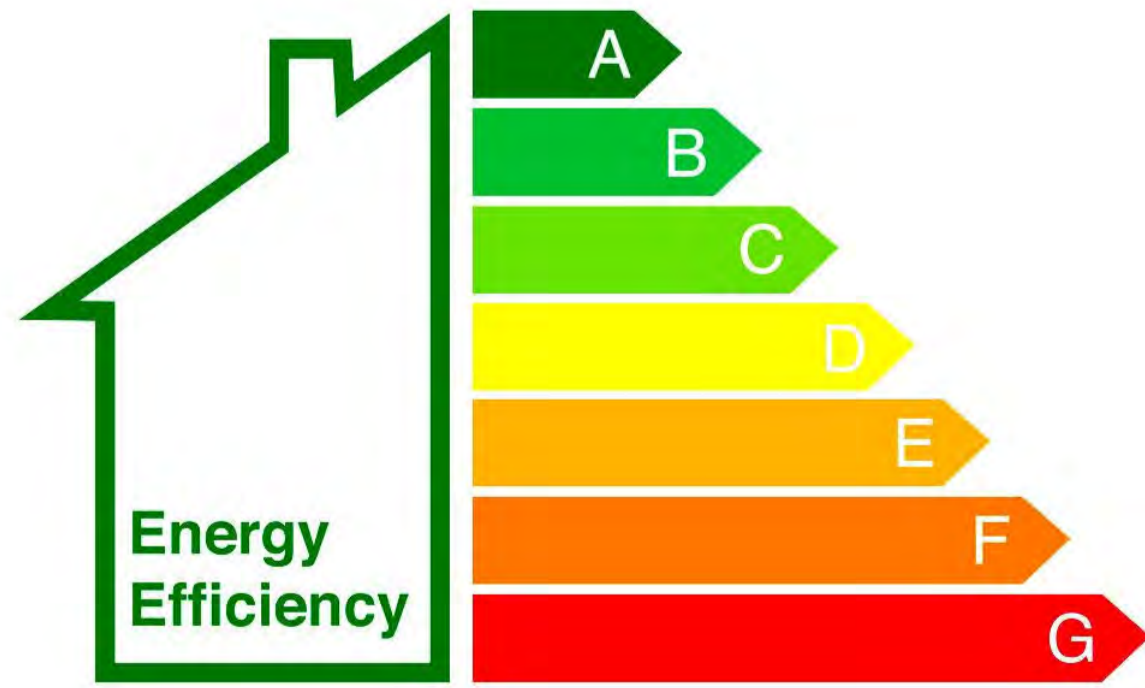
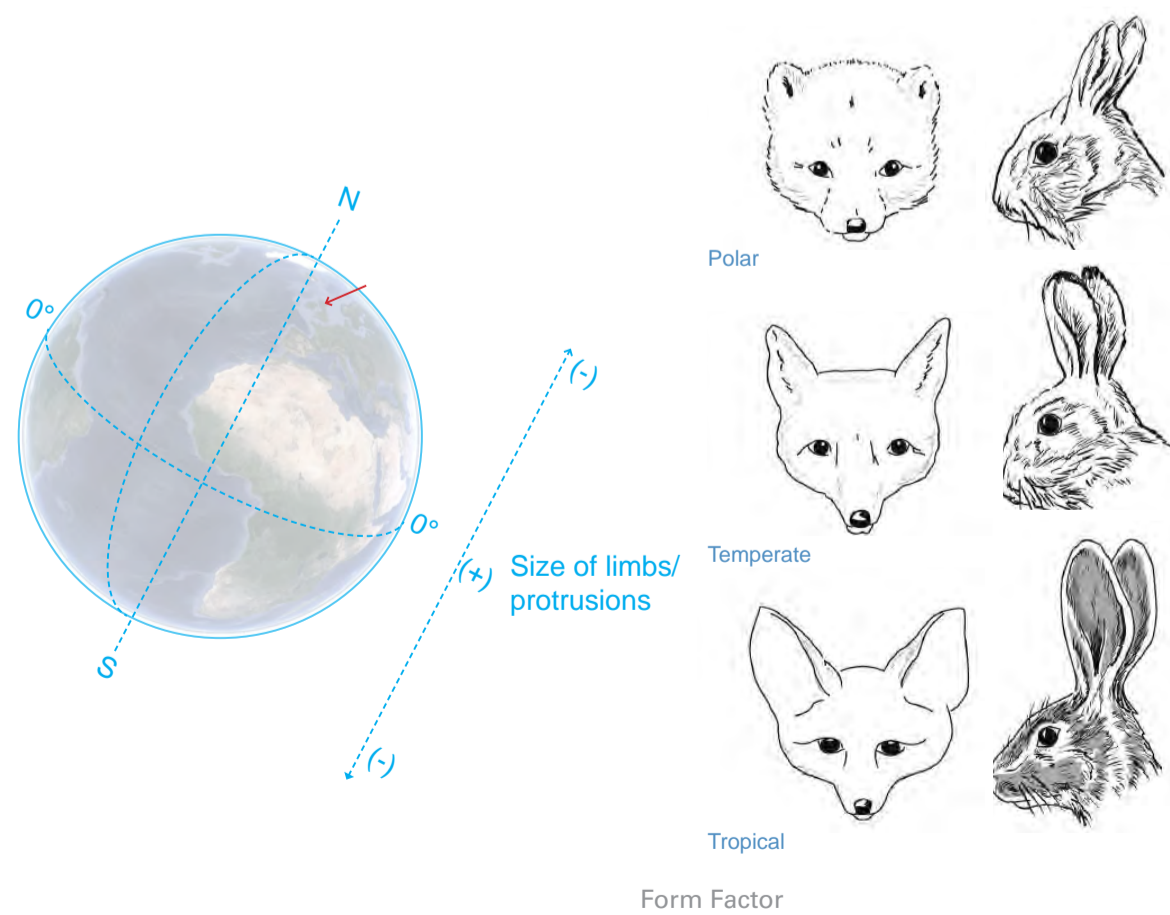


Energy Efficiency

Energy efficiency is a fundamental driver behind the design of Peebles High School and is on track to become one of the most energy efficient buildings in the Scottish Borders.



- Form Factor ✓
- Solar Shading/ Overheating ✓
- Highly Insulated Envelope ✓
- Internal Daylighting ✓
- Passivhaus Principles ✓
- EPC A' ✓
- High quality materials and finishes ✓
- Flexible floor plan ✓
- Placemaking Agenda ✓



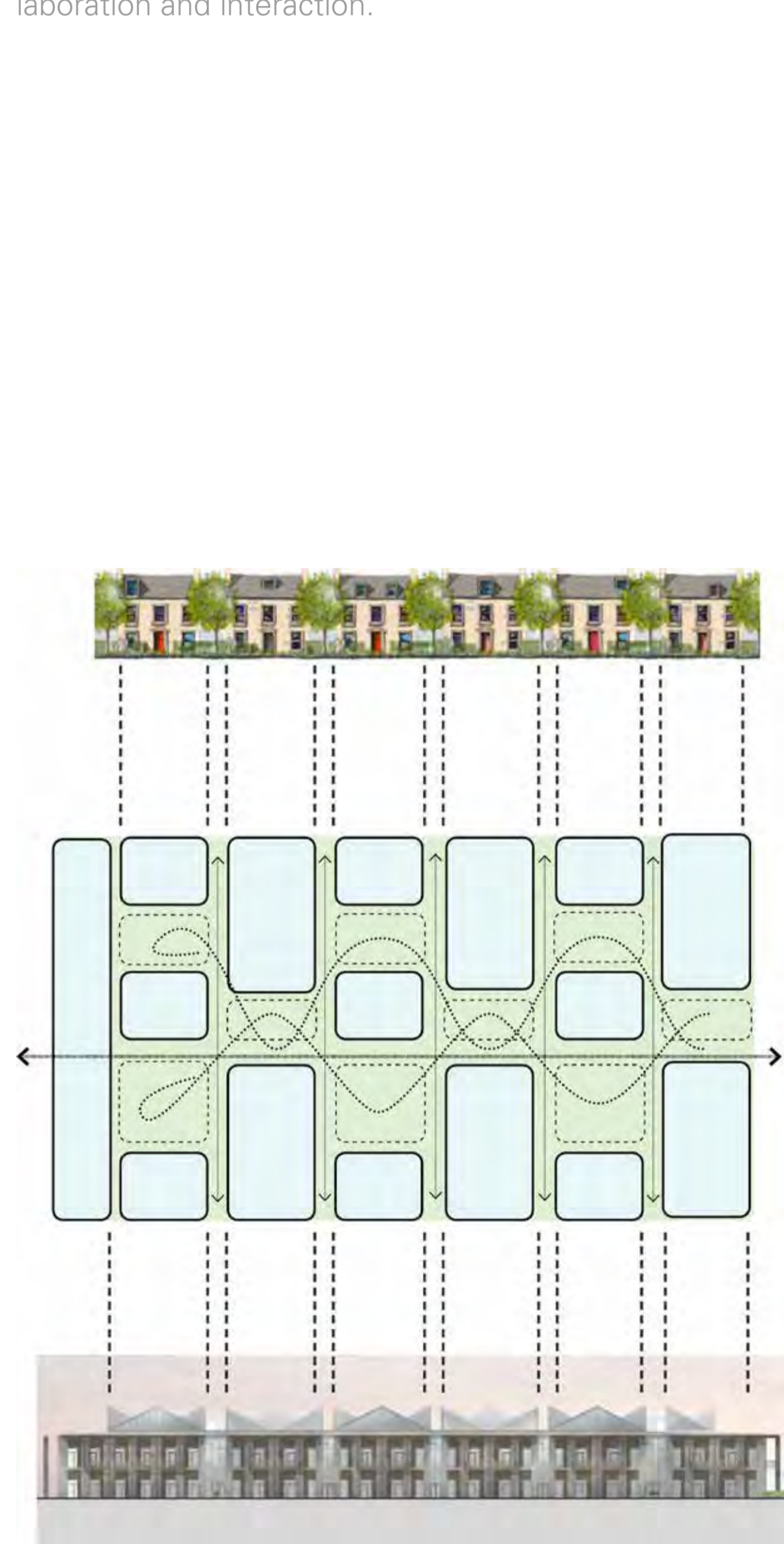
- Townscape and Setting
- Site Layout
- Phasing
- Design Principles
- Internal Design**
- Community Benefits

11

Ground Floor

The practical subjects are all located on the ground floor. Each of these is centred around one or two atria.

This provides excellent access to these facilities from inside or outside, relating to bespoke external learning spaces for each zone and central atrium spaces for collaboration and interaction.



Concept Diagram



Ground Floor

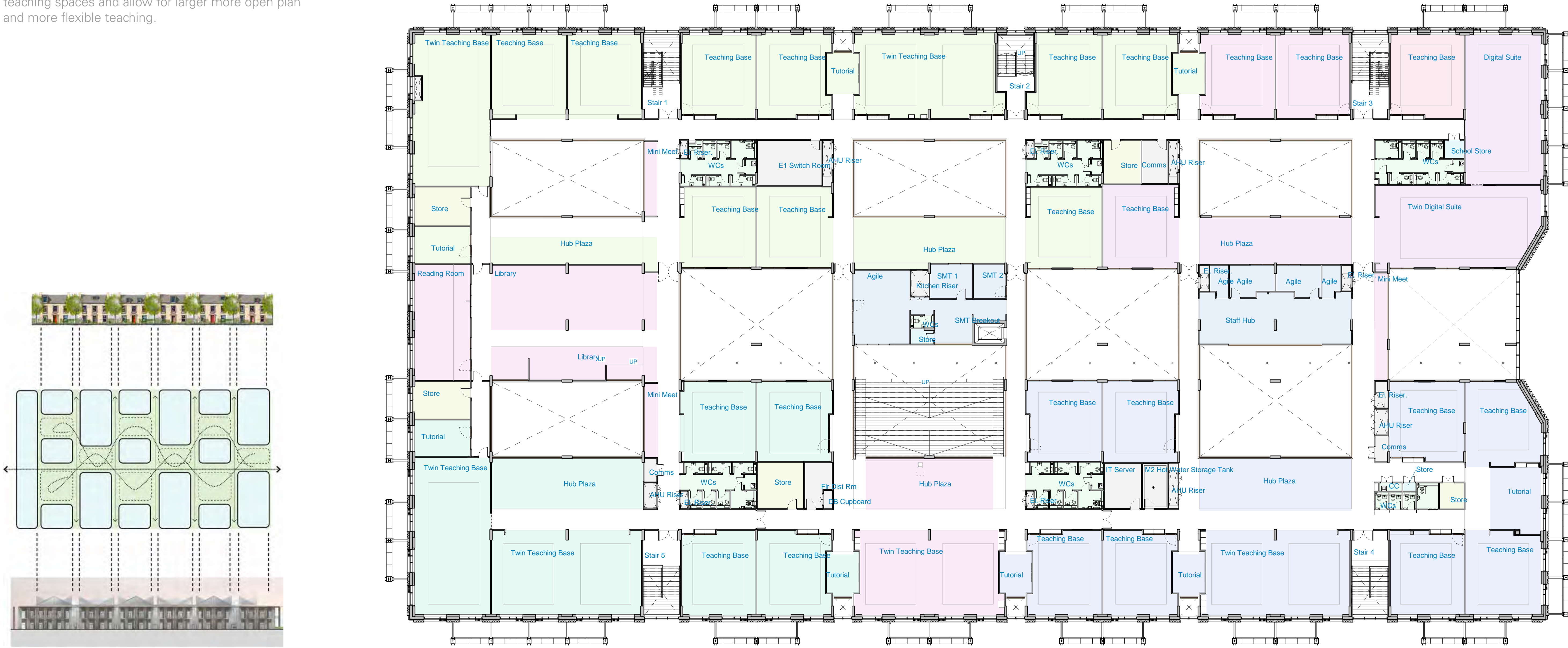
- Townscape and Setting
- Site Layout
- Phasing
- Design Principles
- Internal Design
- Community Benefits

12

First Floor

Non-practical teaching spaces are located typically to the perimeter of the upper floor level. This allows them to benefit from views out and a degree of privacy.

Breakout spaces are located inboard of the main teaching spaces and allow for larger more open plan and more flexible teaching.



Concept Diagram

First Floor

- Townscape and Setting
- Site Layout
- Phasing
- Design Principles
- Internal Design**
- Community Benefits

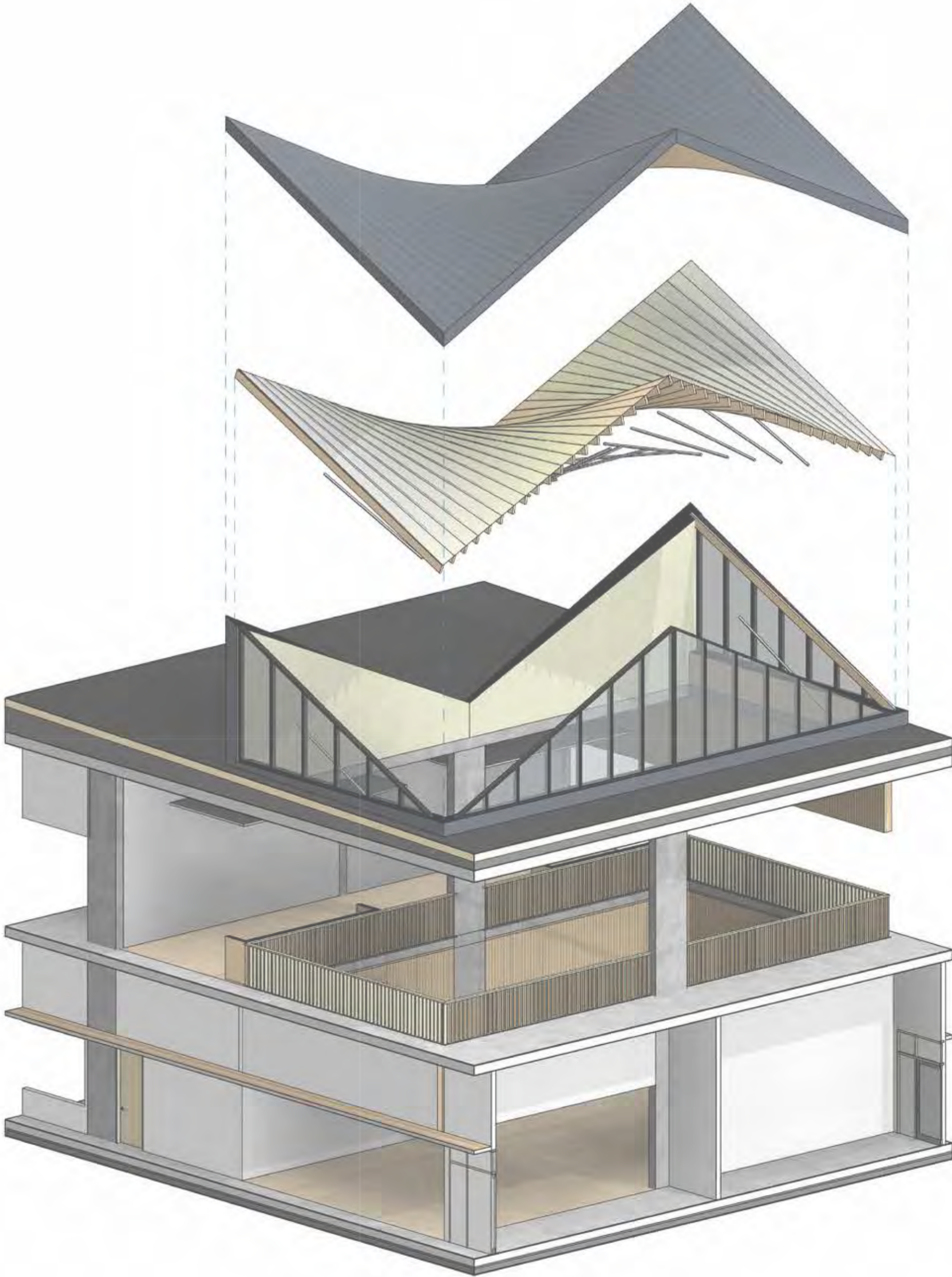
13



Ground Floor Courtyard



First Floor Atrium



Courtyard Arrangement

Sports facilities for the whole community, via Live Borders

The existing sports building was built in 2012. It is a steel frame construction with insulated panel facade on cladding rails. The roof is a kalzip style aluminium.

The intention is to extend the sports building to compensate for loss of facilities from the fire and to keep all sports facilities in a single location on the site.

It is intended that the extension be matched like for like with the existing sports block. The layout is such that further expansion could continue to the north of the building.

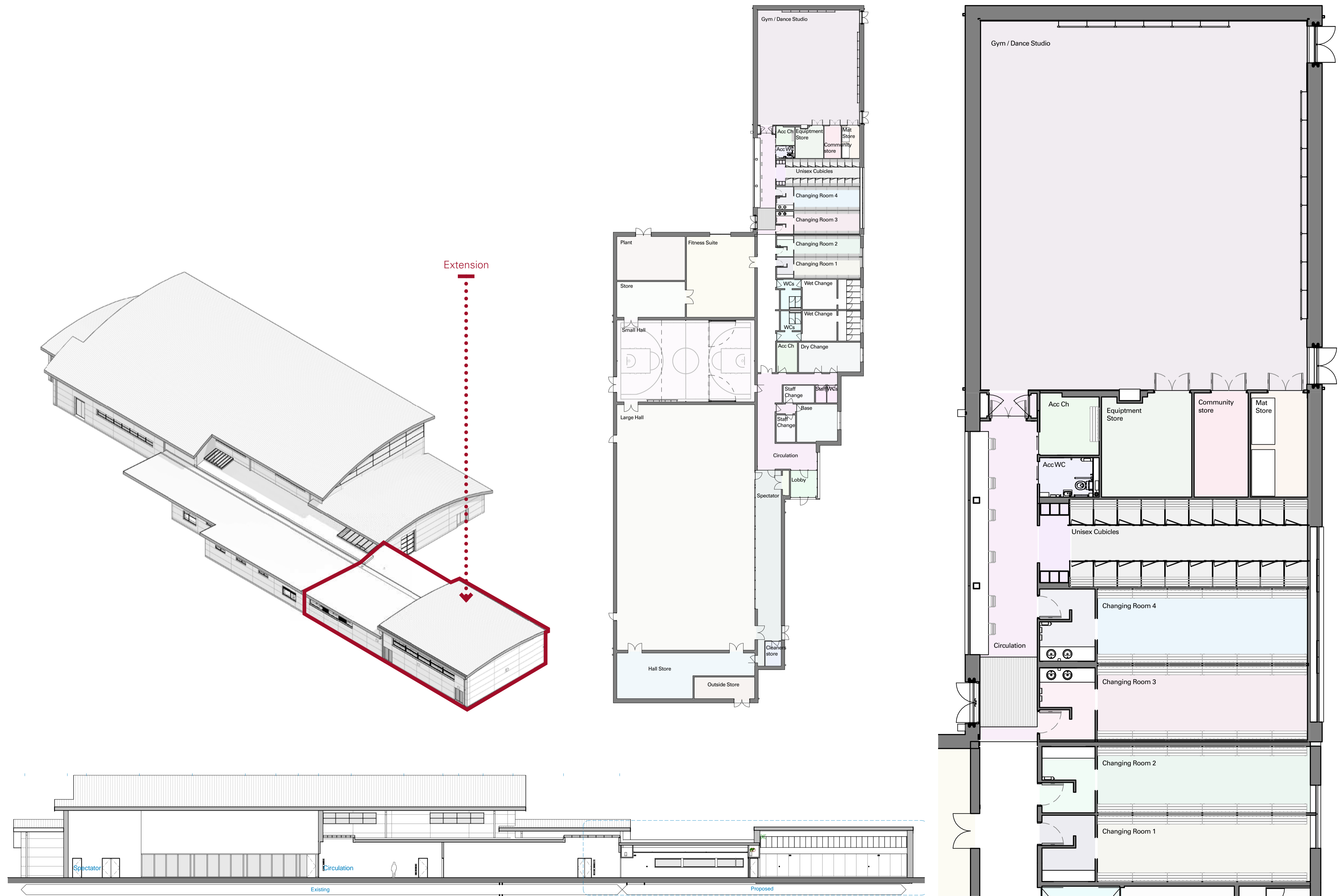
The existing main internal facilities are as follows: Large hall, small hall, fitness suite, wet and dry change. These are to be expanded with: Additional dry changing facilities and an additional gym/dance studio.



Existing Large Hall



Existing Sports Building



- Townscape and Setting
- Site Layout
- Phasing
- Design Principles
- Internal Design
- Community Benefits

At BAM, creating social value that delivers lasting social impact is central to the way we do business.

We are committed to delivering real impact across the Peebles High School project and will work in partnership to focus on the following areas:

- Creation of Employment Opportunities including supporting graduates and apprentices
- Working with education to support and engage local young people in educational activities and providing meaningful work placement opportunities
- Providing site visits
- Delivering training and upskilling opportunities
- Supporting local spend back into the area and providing business advice and capacity building support to local Micro, Small and Medium sized Enterprises (MSME's) and Third Sector Organisations (TSO's)
- Supporting local community projects

The Social and Local Economic Value delivered across the project will be reported.

BAM Social Value Statistics

46,815

 Students engaged

133

 Weeks of Work Experience

9,666

 Volunteering hours to community projects

528

 Apprentices Hired



Why do we do this? We don't just design, build and manage buildings. We live, work, and play in them too because we are part of the communities we create.

