



Galashiels Community Campus

Pre-Application Consultation
Report

March 2021



Applicant and Client

Scottish Borders Council
Council Headquarters
Newtown St. Boswells
Melrose
TD6 0SA



Project Manager and Cost Consultant

Turner & Townsend
Level 2
Atria One
144 Morrison Street
Edinburgh
EH3 8EX



Delivery Partner

Hub South East Scotland Ltd
8 Melville Street
Edinburgh
EH3 7NS



Architect

jmarchitects
64 Queen Street,
Edinburgh
EH2 4NA



Mechanical, Electrical, Fire Engineer and Environmental Consultant

Atelier Ten
Bearford House,
39 Hanover St, E
Edinburgh
EH2 2PJ



Contractor

Morrison Construction Scotland - Central
Rowan House, 2nd Floor,
1 Robroyston Oval
Robroyston,
G33 1AP



Civil and Structural Engineer

Goodson Associates
53 Melville St,
Edinburgh
EH3 7HL



Landscape Design

Rankin Fraser
8 Darnaway St,
Edinburgh
EH3 6BG

1.1 | Introduction

1.2 | The Document

1.3 | Proposal of Application Notice

1.4 | Consultation Plan

2.1 | Scope of Consultation

2.2 | Publicity

2.3 | Consultation Format

2.4 | Programme of Consultation

2.5 | Queries and Comments

2.6 | Attendance

3.0 | Consultation Comments

4.0 | Responding to Consultation Comments

5.0 | Conclusion

1.1

INTRODUCTION



The Scottish Borders Council ('The Applicant') proposes to build a new community campus with associated hard and soft landscaping, covered tennis facility, plant housings and refuse store, external sports provisions, improvement to the landscaping of the surrounding parkland including new play provisions and car parking facilities at the site of the existing Galashiels Academy, Elm Row, Galashiels, TD1 3HU.

This statement has been prepared by jmarchitects as lead consultants and 'Agents' for the Planning Application, with input from the wider Design Team.

1.2

THE DOCUMENT

The proposed development constitutes a major application in terms of the Town and Country Planning (Scotland) Act 1977 as amended by the Planning Etc. (Scotland) Act 2006 and as such requires a statutory period of consultation, feedback and review.

This document sets out to record the process and actions undertaken by the Applicant to meet the requirements of the consultation, to record the feedback received and the steps taken to address the issues raised.

1.3 PROPOSAL OF APPLICATION NOTICE

A Proposal of Application Notice (henceforth referred to as PAN) for the proposed development was sent by jmarchitects to Scottish Borders Council Planning Department and validated on 24th May 2021.

A copy of the Proposal of Application Notice and its attachment are included in Appendix A.

1.4 CONSULTATION PLAN

At a meeting with Scottish Borders Council Planning Department on 6th July 2021 jmarchitects identified and agreed the format, content and timetable for consultation. The proposed format for consultation was as follows:

- Advert in Borders Telegraph and Southern Reporter week commencing 5th July 2021 announcing the launch of both the physical and virtual public exhibitions and signposting where to find them, identifying the dates for two live and interactive online consultation sessions and outlining how to obtain an invitation to these and notifying the public of how to make comments on the proposals.
- A virtual public exhibition of the proposals, online from Thursday 8th July until Thursday 19th August 2021
- An unstaffed physical public exhibition of the proposals at the Galashiels Transport Interchange from Friday 9th July until Thursday 19th August 2021.
- A live and interactive online public consultation session on 28th July 2021 between the hours of 6pm and 9pm
- A live and interactive online public consultation session on 4th August 2021 between the hours of 2pm and 5pm
- A live and interactive online consultation session with the Community Councils notified as part of the PAN Application on 11th August 2021 from 6pm till 7pm.





2.1

SCOPE OF CONSULTATION

The consultation process was extensive and was planned and managed to ensure that the greatest number of consultees could be reached and provided within an appropriate forum despite the social distancing restrictions due to the Covid-19 pandemic.

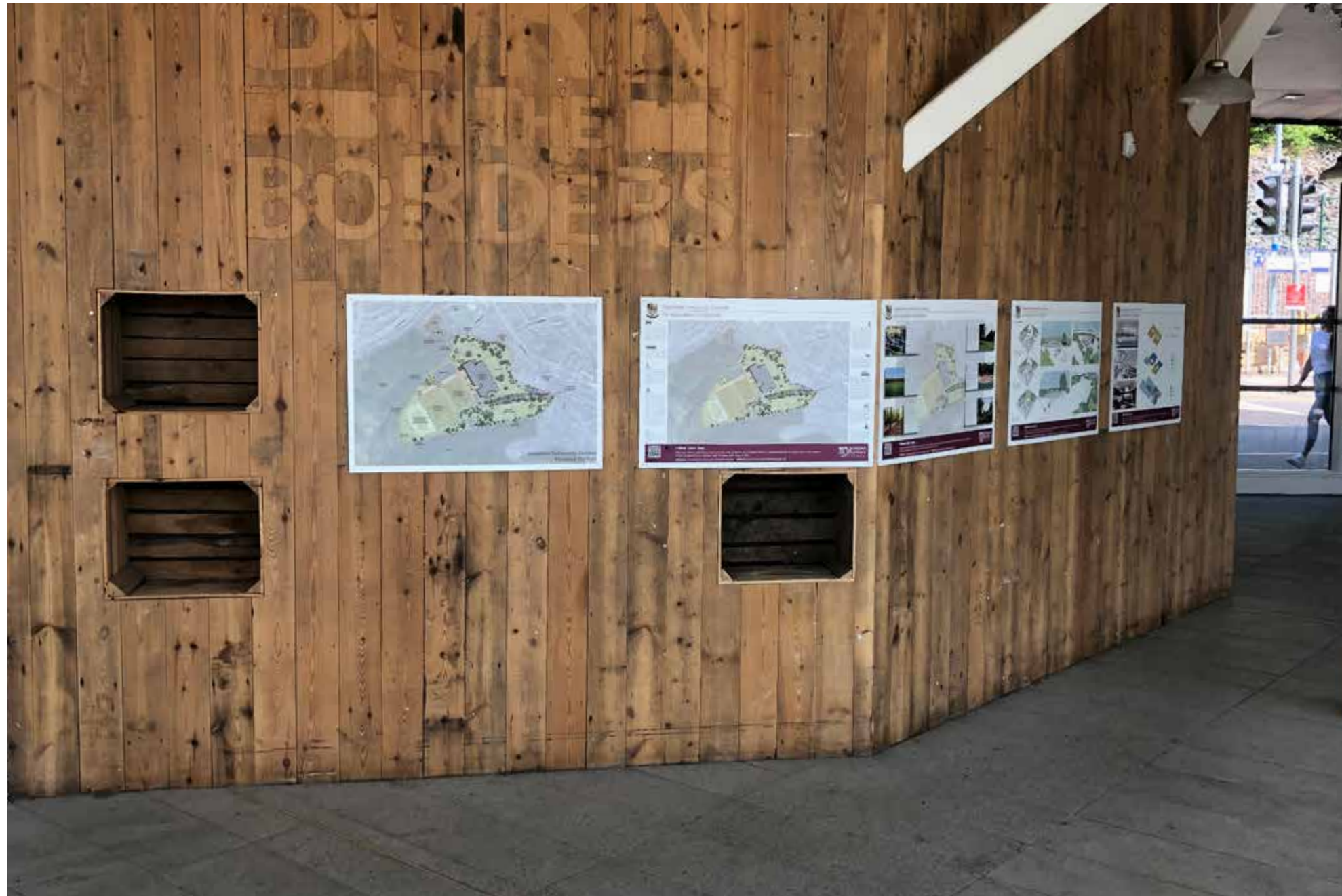
Following the success of the Informal Community Consultation, held at the beginning of 2021, it was agreed that the same online platform would be used for the PAN Consultation as the community were already familiar with this virtual environment. The virtual consultation space hosted the 'traditional' consultation boards as pdfs along with two videos describing the vision and ambitions for the project, an annotated site plan, extensive FAQs and an online feedback form. The website was launched on the 8th July 2021 and remained live for 6 weeks (the website and information is still accessible however after the 6 week period the ability to provide feedback was disabled). This virtual information was also complimented with an unstaffed physical exhibition of the consultation boards at the Galashiels Transport Interchange.

The consultation process also included the following two-way live events:

- A live and interactive online public consultation session on 28th July 2021 between the hours of 6pm and 9pm
- A live and interactive online public consultation session on 4th August 2021 between the hours of 2pm and 5pm
- A live and interactive online consultation session with the Community Councils notified as part of the PAN Application on 11th August 2021 from 6pm till 7pm.

The live events were planned and advertised for set times to ensure that members of the public knew when project staff would be available to provide information. All attendees were provided with the opportunity to give feedback and ask questions during the events.

Due to the online nature of the events, an overview of the project was presented, led by jmarchitects. Following the presentation there was an opportunity for participants to ask questions to the project team about the development with the presentation slides playing on a loop during the remained of the consultation session to allow participants to view the scheme at their leisure.



Site location in Edinburgh

2.2

PUBLICITY

In addition to the circulation of the PAN, an advert for the public consultation was placed in the Public Notices section of two local newspapers, the Borders Telegraph and the Southern Reporter, in the editions published week commencing 5th July 2021.

Parents and carers of current pupils at Galashiels Academy were notified of the PAN submission by means of an email and a Groupcall, which highlighted to them that there would be a public meeting in July and that consultation material would be available prior to this.

There was also a social media campaign run by Scottish Borders Council Comms Team to promote the consultation.

A copy of the newspaper advert and social media posts are included in Appendix B.

2.3

CONSULTATION FORMAT

The PAN Consultation Boards accessible on the virtual consultation space were identical to those pinned up in the physical public exhibition at the Galashiels Transport Interchange and the presentation given during the live and interactive consultation events shared the same content as the boards re-formatted into a presentation. This content covered the following:

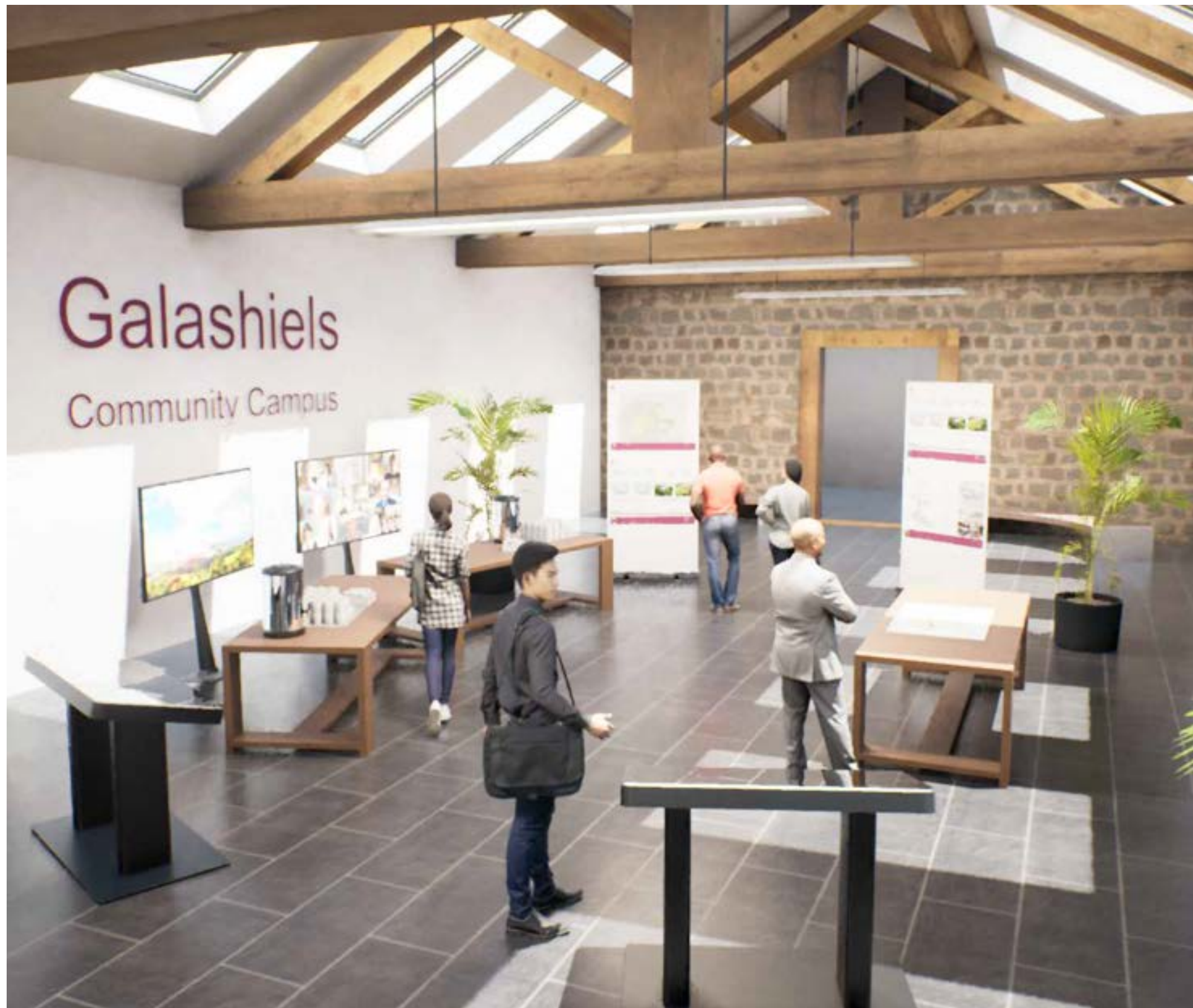
- Proposed Site Plan
- Proposed Building Accommodation
- Proposed External Landscaping Strategy
- Design Development Diagrams
- Sketch Views of Proposed Building
- Internal CGI Views of Proposed Building

A copy of the PAN Consultation Boards is contained within Appendix C.

2.4

PROGRAMME OF CONSULTATION

The consultation period began on 24th May 2021 and concluded on 19th August 2021, a total period of 12 weeks.



2.5

QUERIES AND COMMENTS

During the live and interactive online public consultation session, members of the Design Team and Scottish Borders Council project team were available to describe the proposals and answer any questions or concerns about the design.

The comments were collated along with any response received via the feedback form and email and reviewed by the project team to establish the main issues raised.

2.6

ATTENDANCE

The live and interactive online public consultation sessions were all well attended and the analytics from the virtual online public exhibition also showed a good number of visitors. Unfortunately we do not have any data on the number of people who visited the unmanned public exhibition at the Transport Interchange. Details on the attendance numbers can be found below:

Online Public Exhibition
8th July - 19th August 2021
387 Unique Visitors

Live and Interactive Online Public Consultation Session 1
28th July 2021 6-9pm
14 Members of the public

Live and Interactive Online Public Consultation Session 2
11th August 2021 6-7pm
14 Members of the public
5 Elected Members

Live and Interactive Online Consultation Session - Community Council
4th August 2021 2-5pm
8 Community Council Members

7 comments were also received via the feedback form available on the online consultation space and via the dedicated project email address.

Feedback was collated from the various consultations and grouped into the following main issues. Although these do not all necessarily relate directly to Planning, we felt it was important to highlight the key issues raised nevertheless.

During the two live online public consultation sessions there was a number of references made to the Information Community Consultation (ICC) and the process and decisions made during and following this. The attendees were reminded that following the conclusion of the ICC a report was taken to Council on 13.05.21 and the overall site strategy taken forward to this PAN Consultation was unanimously supported. Attendees were also reminded that the PAN Consultation is a consultation on the proposals shown and not a consultation on the process.

The main points are summarised as follows:

3.1 Managing and Minimising Disruption During Construction

Concerns were raised regarding disruption during the construction period. These concerns made reference to a number of parties including to the pupils and staff of Galashiels Academy, the adjacent care home and sheltered housing complex as well as surrounding residents.

More specific concerns were raised regarding construction site access, the accessibility of the park during construction and the safety of pupils and the public.

3.2 Preservation and Protection of Trees

In addition to the heavily wooded areas in and around the proposed site there are a number of trees of significant landscape value in close proximity to the construction zone. There were concerns raised about how these trees would be preserved and protected during construction.

3.3 Area of Archeological Interest

When viewing Scott Park on Google Earth, there is a circular landform visible within the site boundary and the question was posed from some members of the public as to whether this land form may have any archeological value.

3.4 Traffic Impact on Surrounding Roads

Concerns were raised regarding what impact the co-location of a secondary school, enhanced provision, swimming pool and replacement Queens Leisure Centre would have on the traffic levels along Livingstone Place and the surrounding area.

3.5 Improvements to Scott Park

There was a high level of interest from the public as to what improvements would be made to Scott Park as a result of the development and how these would benefit the community in the long term.

3.6 EP11

Planning Policy EP11 of The Scottish Borders Local Development Plan applies to the proposed site for the new Community Campus and there were a number of consultees who were concerned about the relevance of this policy.

3.7 Life Expectancy of Facilities

Questions were posed as to the life expectancy of the proposed facilities.

3.8 Sports Facilities

An interest was expressed for enhancements to be made to the proposed sports facilities, these included; an increase from the proposed 6 court to an 8 court games hall, a moveable floor within the swimming pool and a covered tennis facility externally.

3.9 How Do School and Community Facilities Co-exist?

A number of consultees requested further information on how the proposed facilities would work with both community and school use during the day and would the community facilities be compromised because of the shared use?

The comments and queries raised by consultees aided the continuing development of the proposals and helped to focus the attention of the Design Team onto key areas of concern for local people.

3.1 Managing and Minimising Disruption During Construction

Care will be taken when planning the works to minimise disruption to the local community. This will include considerations relating to access, noise and dust. The Senior Leadership Team and staff of the school will work with the project team and main contractor to ensure that disruption is kept to a minimum.

Large areas of the existing park will remain accessible during the construction period and careful consideration of phasing will take into account early stage development of new areas of park to allow these to be accessed as soon as possible during the construction period.

Both a Construction and Traffic Management Plan and a Noise Impact Assessment will be submitted as part of the Planning Application.

3.2 Preservation and Protection of Trees

The current proposals ensure that the three mature trees of significant value and in close proximity to the new community campus will be retained.

An arborist has undertaken a survey of the trees within the site boundary including any recommended root protection zones required and this will be adhered to and submitted as part of the Planning Application alongside an associated Tree Retention and Protection Plan.

3.3 Area of Archeological Interest

Following the consultation an archeologist was engaged to undertake a desk-based assessment of the proposed site and in particular the area of interest noted by the community. This assessment established that there are surviving remains of local to region heritage value and negligible to medium sensitivity within the proposed site. The exact nature of the noted earthworks was not able to be determined however

it was suggested that it was possibly from the 19th Century and perhaps used for spectating events within the enclosed area.

Mitigation measures to avoid, reduced and offset the effects of the proposed development will be agreed with Scottish Borders Council Archaeological Advisor and detailed in a Written Scheme of Investigation and implemented in advance of development.

The complete archeological desk-based survey will be submitted as part of the Planning Application.

3.4 Traffic Impact on Surrounding Roads

It is proposed that the area of the existing swimming pool and associated car park will be replaced with dual staff and community car park as well as a dedicated bus drop off and pick up area which will move the buses off Livingstone Place helping improve traffic flow at peak times. This 'off-site' car park is proposed in order to drastically reduce the number of vehicles within Scott Park and improve the safety of both pupils and the community.

There will also be provisions made to support and encourage the use of sustainable transport methods such as secure cycle storage and accessible changing facilities within the community campus.

A formal Transport Assessment was undertaken which covered existing transport conditions, anticipated trip generation and a traffic impact assessment and it was concluded that the proposed development will not have any detrimental impact to other users of the transport network in the area.

A copy of the Transport Assessment will be submitted as part of the planning application.

3.5 Improvements to Scott Park

In addition to the Pre-Application Consultation the project team have established 'The Scott Park Working Group'. Representatives from the local community were invited to a number of workshops with members of the project team and during these were able to convey their vision

and ideas for the re-imagined Scott Park. Over the course of a number of sessions the project team have listened, discussed, reflected and incorporated these ideas into the proposals that are included in the Planning Application.

More information on the proposals can be found the Design and Access Statement which is included in the Planning Application.

3.6 EP11

Planning Policy EP11 of The Scottish Borders Local Development Plan states that the loss of greenspace (protected under EP11) will be permitted if new comparable open space is provided or enhancements to existing open space are made. The proposals show an overall area increase for Scott Park and propose enhancements to the existing park areas. As stated in 3.5 these proposals have been developed in conjunction with the Scott Park Working Group to ensure that the re-imagined Scott Park will best serve the local community.

A more detailed response to how the project responds to EP11 has been included as part of the Planning Application.

3.7 Life Expectancy of Facilities

Life expectancy of building components and elements vary, however we are passionate about our buildings in the Scottish Borders and want them to remain in the community for as long as possible. The building we have designed has been designed using materials which have life longevity and therefore we would expect the life expectancy to be in the region of at least 50-60 years. Scottish Borders Council will endeavour to maintain these facilities for years to come and ensure they are kept in a good state of repair for not only our pupils with thriving futures ahead of them, but also for our respected community.

3.8 Sports Facilities

The project team have discussed and reviewed these enhancements and of the forecast of use. The forecast level of use of these is not such that would warrant the inclusion of increased sports hall provision or a

moveable swimming pool within the project. Covered tennis courts are proposed as part of the application, with their inclusion subject to an ongoing funding application.

3.9 How Do School and Community Facilities Co-exist?

It is envisaged that the existing level of community use provided at the current Galashiels Swimming Pool and at the Queens Leisure Centre will be maintained and enhanced within the new community campus building with provision of additional facilities such as the hydrotherapy pool, dance studio and fitness suite. Public access to the new sports and leisure facilities will be managed by Live Borders and work is currently being undertaken to optimise the use of the facilities across both community and education groups.

The Pre-Application Consultation process raised some valuable points from pupils, local residents, key stakeholders and the wider community and these were taken on board as far as possible to inform the development of the proposals submitted as part of this Planning Application.

It is acknowledged that there may be a number of further issues raised following the submission of the detailed planning application due to the development of the design.

The Pre-Application Consultation process has been an invaluable part of the on-going development of the project in arriving at the final proposals now contained within the Planning Application. The local community has contributed significantly to this process and the project team wish to extend their appreciation and thanks to all of those who have been part of this process.



PLANNING & ECONOMIC DEVELOPMENT
PROPOSAL OF APPLICATION NOTICE

Under the Town and Country Planning (Development Management Procedure (Scotland) Regulations 2008

The planning authority will respond within 21 days of receiving the Notice. It will advise whether the proposed PAC is satisfactory or if additional notification and consultation above the statutory minimum is required. The minimum consultation activity includes consultation with the relevant community council(s), the holding of a public event, and its advertisement.

1. Applicant and Agent Details.

APPLICANT	AGENT (if applicable)
Name Scottish Borders Council	Name JMW/JMR
Address Council Headquarters Newtown, St Boswells	Address 64 Queen Street Edinburgh EH2 4NA
Telephone 0300 100 1800	Telephone 0131 464 6100
E-mail Address	E-mail Address

2. State the postal address of the prospective development site. If there is no postal address, describe its location. In order to identify the site show its outline on an OS base plan and attach it to this completed Notice.

The site is located at Galashiels Academy, Elm Row, Galashiels, TD1 3HU. Please refer to attached site location drawing: GCC-JMA-ZZ-DR-A-00-0010

3. Describe in general terms the development to be carried out. Outline its characteristics and identify its class (national or major).

Major development including the demolition of the existing school and erection of a new 2 and 3 storey community campus (including secondary school with provision for pupils with severe and complex needs and community swimming pool and sports facilities) with associated hard and soft landscaping, external sports provision, service access, car parking and improvements to the landscaping of the areas of parkland included within the site boundary.

4. State which other parties have received a copy of the Proposal of Application Notice.

The following community councils and local councillors, who's wards fall within the catchment area of the existing Galashiels Academy, have been issued with a copy:

- Community Councils:**
Galashiels (T Aitch, secretary)
Chirnside & District (S Turnbull, secretary)
Hemel (J Williams, chairperson)
Shaw & Fourtrees (J Martin, secretary)
Tweedbank (R Purvis, secretary)
- Local Councillors:**
Andy Anderson, Galashiels and District
Andy Anderson, Galashiels and District
Euan Aitken, Galashiels and District
Harry Scott, Galashiels and District
Jenny Leehan, Leadcraig and Melrose
Tom Mack, Leadcraig and Melrose
David Parker, Leadcraig and Melrose
Shona Halston, Tweeddale East
Ruth Taylor, Tweeddale East
Caroline Cochran, Selkirkshire
Gordon Edgar, Selkirkshire
Elaine Thornton-Nicol, Selkirkshire

5. An account of what consultation is being proposed. State when such consultation will take place, with whom it will be, and what form it will take.

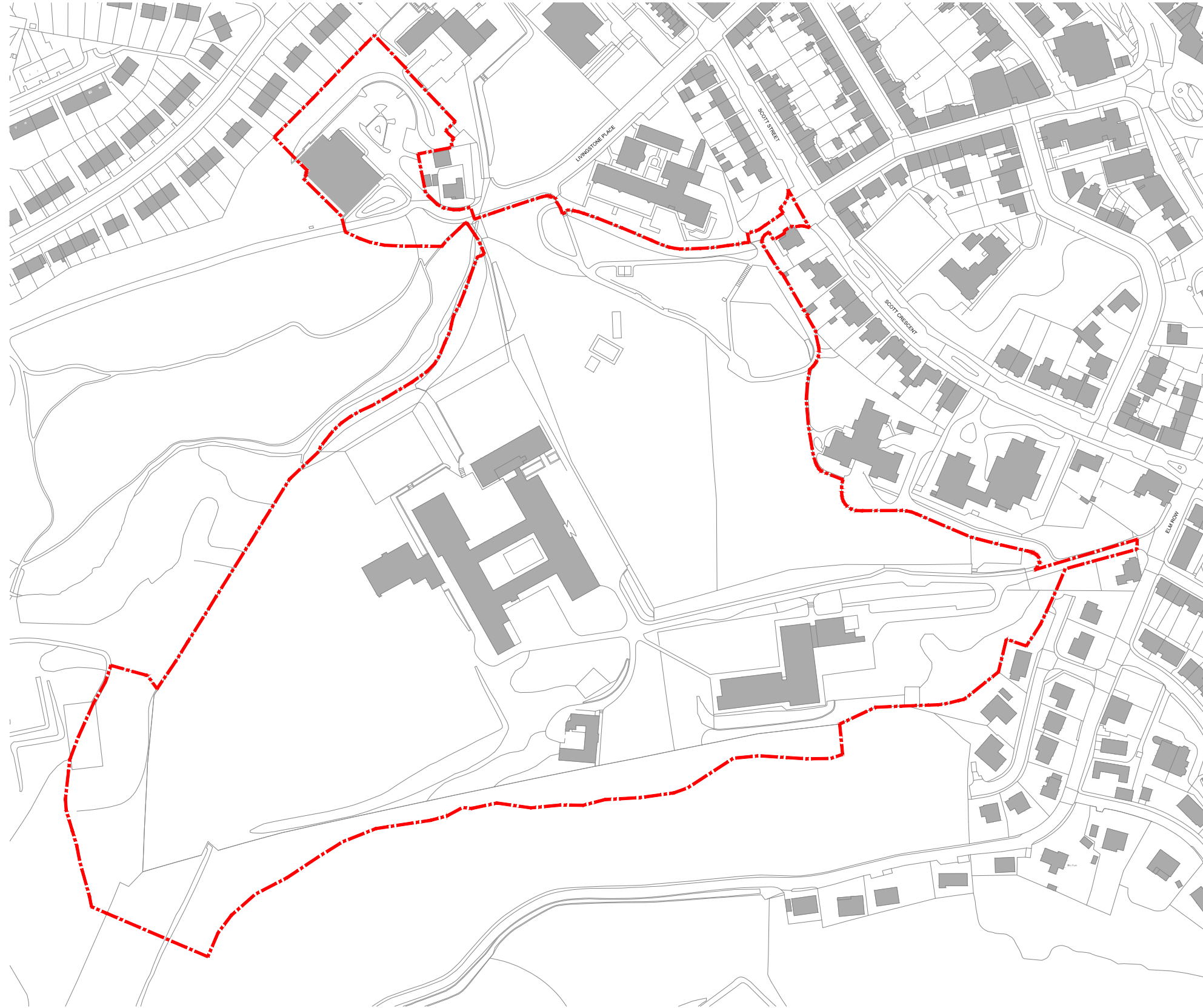
To ensure the safe participation of the community and local stakeholders, this consultation strategy is digitally focused. However, should Scottish Government Covid restrictions ease and if it is safe to do so, we will review the use of in person consultations where appropriate.

It is proposed that this consultation programme will launch in July 2021 with specific dates to be confirmed and includes a range of features to ensure best practice in line with the expectations of a Proposal of Application Notice:

- A consultation website, providing details of the proposals and relevant drawings and visuals with the embedded facility for visitors to provide feedback – launch date TBC
- A dedicated 'Public Consultation Event' facilitated via Microsoft Teams or similar allowing members of the public to have a two-way conversation with the project team – date TBC
- A Community Council presentation and meeting, facilitated via Microsoft Teams or similar – date TBC
- A physical exhibition of proposals hosted at the Galashiels Transport Interchange – date TBC
- A newspaper notice providing information on the engagement processes above and how to contribute feedback on the consultation – date TBC
- Social media promotion of all of the engagement processes above and how to contribute feedback on to the consultation

Planning Authority Reference Number: / /PRE
Date of receipt of the Proposal of Application Notice

A planning application for a national or major development cannot be submitted less than 12 weeks from this date and without the statutory requirements having been undertaken. The application must be accompanied by the PAC report.

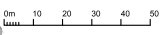


NOTES:
1. THIS DRAWING NOT TO BE SCALED. FIGURED DIMENSIONS ONLY TO BE TAKEN.
2. SHOULD ANY DISCREPANCIES BE FOUND WITH THIS DRAWING, PLEASE INFORM THIS OFFICE.
3. COPYRIGHT OF THIS DRAWING IS OWNED BY JMW ARCHITECTS.
4. STRUCTURAL INFORMATION INDICATIVE ONLY. TO BE CONFIRMED BY STRUCTURAL ENGINEER. REFER TO STRUCTURAL ENGINEER'S DRAWINGS FOR LOCATIONS OF BRACING & WINDPOSTS.

NOTES:
- - - - - Extent of PAN Site Boundary (126,791m² / 12.6ha)



P01 Drawing issued for information.
19.05.21 CD DT



jmarshitects

Project: Galashiels Community Campus
Title: PAN Site Boundary Plan
Client: Scottish Borders Council
Scale: 1:1000 @ A1
Drawing Number: GCC-JMA-ZZ-DR-A-00-0010
Status: S1
Revision: P01

64 Queen Street
Edinburgh
EH2 4NA
T: 0131 464 6100
F: 0131 464 6150
edin@marshitects.net
www.marshitects.net

Church and Religious Notices

Planning Notices

Our Scottish Borders
Your community

Scottish Borders COUNCIL

www.scotborders.gov.uk

Town and Country Planning (Scotland) Act 1997
as amended by The Town and Country Planning
(Development Management Procedure) (Scotland)
Regulations 2008 (Regulation 7(2)(b))

PRE-APPLICATION CONSULTATION PUBLIC EVENTS:

Galashiels Community Campus
For the construction of new community campus at
Galashiels Academy, Elm Row, Galashiels, TD1 3HU

A virtual public exhibition of the proposals will be held online at
www.scotborders.gov.uk/galacampus
from Thursday 8th July 2021, until Thursday 19th August 2021

An unstaffed physical public exhibition of the proposals will be held at
the Galashiels Transport Interchange, Stirling Street, Galashiels, TD1 1BW
from Friday 9th July 2021, until Thursday 19th August 2021

Live and interactive online consultation sessions will take place on
28th July 2021 between the hours of 6pm and 9pm &
4th August 2021 between the hours of 2pm and 5pm

To obtain an invitation to either of these events please email your interest to
galacampus@scotborders.gov.uk

Those willing to make comments on the proposals may do so during the above
events, via the feedback form in the virtual exhibition or in writing to
galacampus@scotborders.gov.uk
no later than 19th August 2021

Please note that all written representations must be sent to the above address and
not to Scottish Borders Council Planning Department. An opportunity to make
representations to the Council will exist when a formal planning application is made.

Scottish Borders – the place to live and work

Scottish Borders Council
52 mins · 🌐

A further consultation for Galashiels Community Campus is now available to view online.

The site includes updated plans and designs which have been further developed following a period of informal consultation.
<http://ow.ly/kM2R50FrGiC>



Like Comment Share

Tweet

SBC @scotborders

A further consultation for Galashiels Community Campus is now available to view online.

The site includes updated plans and designs which have been further developed following a period of informal consultation.

ow.ly/7LIZ50FrGiD



2:14 pm · 8 Jul 2021 · Hootsuite Inc.

Like

Home Request Report Pay A-Z of services

Coronavirus (COVID-19)
[Please see our dedicated pages for service updates, information and advice](#)

Home / Latest news / Further consultation on Galashiels Community Campus goes live

Further consultation on Galashiels Community Campus

Published: Thursday, 8th July 2021

A further consultation on more detailed plans for Galashiels Community Campus is now available to view online.

Online consultation

The consultation can be viewed online.

This online space offers the opportunity for members of the public to view more detailed plans for the replacement of Galashiels Academy.

It focuses on the proposal to build the Community Campus within the existing school boundary and a portion of the town's Scott Park.

Visitors can view more detailed plans for the Campus including updated site plans and designs which have been further developed and refined following a period of informal consultation with the local community.

Members of the community can also revisit the materials presented as part of the informal consultation which took place in March and April, including videos outlining the vision for the proposed campus, animated fly-throughs of what the facility may look like and interviews with pupils and members of the community.

Exhibition boards and online public meetings

Exhibition boards outlining the updated designs will also be positioned at Galashiels Transport Exchange from 9 July to 19 August.

Online public meetings are being held on 28 July and 4 August where we will showcase the designs for the Campus in detail and explain their decision making for the project.

It will also provide an opportunity to update the public on progress made by the Scott Park working group which is working in collaboration with the local community to help shape and influence the final design of the reimagined and expanded park.

Members of the public are being encouraged to attend either of the meetings and comment on the updated designs available through the online consultation space.

You can register for the online consultation sessions by emailing Galacampus@scotborders.gov.uk

Next steps of the project

Following the conclusion of the consultation, the comments received will be included within a report that will be submitted as part of the full planning application.

A statutory education consultation will also take place focusing on the educational benefits of the Campus with the aim of gathering feedback from the school community.

Councillor Carol Hamilton, Executive Member for Children and Young People

"Engagement with the community at this stage of designing the Campus is crucial in helping shape the finalised plans.

"Our main goal as part of this project is creating a facility that will bring benefits to all who use it, including the wider Galashiels community and beyond.

"That's why we are encouraging as many people as possible to view our updated plans on the online consultation space and submit their feedback.

"An online public meeting is being held which will allow members of the public to hear in more detail the plans and vision for the Campus and hear directly from all those involved in the project.

"This consultation really is the opportunity for all in the community, not just the school community, to get involved and share their views about the plans for a brand new school."

Contact us
Accessibility statement
Terms and disclaimer
Site map
Cookies
Languages
Social media

© Scottish Borders Council 2021
Designed and Powered by Jato

Facebook Twitter YouTube Instagram

Galashiels Community Campus Pre Application Consultation

01 The car parking facilities for the new community campus will be located off-site to reduce the number of vehicles in the vicinity of Scott Park.

02 There will be a dedicated bus and coach drop off area on Livingstone Place.

03 Accessible/ disabled parking spaces will be provided in close proximity to the main entrance of the new community campus.

04 There will be a variety of external sports facilities to complement those inside the new community campus. These will include: a 2G synthetic football and hockey pitch, a 3G synthetic rugby and football pitch, a grass football pitch with 200m athletics oval, a 6-lane 100m sprint track with long jump pit and a 4-court tennis facility.

05 Biodiverse area with meadow and wetland planting.

The existing path network in Scott Park will be extended to allow circumnavigation of the new community campus. Opportunities to access the Gala Poles and Gala Hill from Scott Park will also be enhanced.

A secure and accessible playpark will be one of a number of play facilities within the new Scott Park.

The existing areas of Scott Park will be added to with a new area of open parkland where the current school annex building is.

A new woodland area is planned to be added to Scott Park to help increase the variety of park environments.

Vehicular access to the community campus will be retained from Elm Row. However, this will be restricted to Enhanced Provision drop off and pick up, accessible parking and deliveries only to ensure the safety of the pupils and users of Scott Park.

Opening up connections to the existing network of paths that run through the Gala Poles and Gala Hill areas, will better integrate Scott Park and the town of Galashiels with the wider woodland setting and extend the educational offering to the proposed Gala Community Campus.

The proposals for Scott Park recognise the importance of this space strategically within the town, recognise the historical importance of the designed landscape and seek to improve the park in size and facilities, as both a public and an education asset.

A range of play facilities for varying ages and abilities are proposed throughout Scott Park, including:

- A secure and accessible playground
- Incidental play facilities for younger children
- Informal natural play facilities

A variety of sports facilities are proposed for use both by the school and the wider community. A sprint track, long jump pit, tennis courts and fenced pitches with spectator seating make up the formal sports provision, whilst an unenclosed informal grass pitch to the south west of the site offers sporting opportunities as well as accessible and flexible open space for community gatherings and events.

As a result of the demolition of the school's annex, the area south of the tree lined avenue can be brought into public use. This new area of Scott Park will contain a variety of open and enclosed spaces. The perimeter of Scott Park will be opened up, extending the existing network of paths to improve community access.

Have your say...
Visit our virtual consultation space online and complete our feedback form or email comments directly to the email address below, responses are welcome until Thursday 19th August 2021.
Online: www.scotborders.gov.uk/galacampus **Email:** galacampus@scotborders.gov.uk

Scottish Borders COUNCIL

Galashiels Community Campus Pre Application Consultation

01 The car parking facilities for the new community campus will be located off-site to reduce the number of vehicles in the vicinity of Scott Park.

02 There will be a dedicated bus and coach drop off area on Livingstone Place.

03 Accessible/ disabled parking spaces will be provided in close proximity to the main entrance of the new community campus.

04 There will be a variety of external sports facilities to complement those inside the new community campus. These will include: a 2G synthetic football and hockey pitch, a 3G synthetic rugby and football pitch, a grass football pitch with 200m athletics oval, a 6-lane 100m sprint track with long jump pit and a 4-court tennis facility.

05 Biodiverse area with meadow and wetland planting.

The existing path network in Scott Park will be extended to allow circumnavigation of the new community campus. Opportunities to access the Gala Poles and Gala Hill from Scott Park will also be enhanced.

A secure and accessible playpark will be one of a number of play facilities within the new Scott Park.

The existing areas of Scott Park will be added to with a new area of open parkland where the current school annex building is.

A new woodland area is planned to be added to Scott Park to help increase the variety of park environments.

Vehicular access to the community campus will be retained from Elm Row. However, this will be restricted to Enhanced Provision drop off and pick up, accessible parking and deliveries only to ensure the safety of the pupils and users of Scott Park.

Opening up connections to the existing network of paths that run through the Gala Poles and Gala Hill areas, will better integrate Scott Park and the town of Galashiels with the wider woodland setting and extend the educational offering to the proposed Gala Community Campus.

The proposals for Scott Park recognise the importance of this space strategically within the town, recognise the historical importance of the designed landscape and seek to improve the park in size and facilities, as both a public and an education asset.

A range of play facilities for varying ages and abilities are proposed throughout Scott Park, including:

- A secure and accessible playground
- Incidental play facilities for younger children
- Informal natural play facilities

A variety of sports facilities are proposed for use both by the school and the wider community. A sprint track, long jump pit, tennis courts and fenced pitches with spectator seating make up the formal sports provision, whilst an unenclosed informal grass pitch to the south west of the site offers sporting opportunities as well as accessible and flexible open space for community gatherings and events.

As a result of the demolition of the school's annex, the area south of the tree lined avenue can be brought into public use. This new area of Scott Park will contain a variety of open and enclosed spaces. The perimeter of Scott Park will be opened up, extending the existing network of paths to improve community access.

Have your say...
Visit our virtual consultation space online and complete our feedback form or email comments directly to the email address below, responses are welcome until Thursday 19th August 2021.
Online: www.scotborders.gov.uk/galacampus **Email:** galacampus@scotborders.gov.uk

Scottish Borders COUNCIL

Galashiels Community Campus Pre Application Consultation

01 Building located with strong connection to town, encouraging pedestrian access.

02 Missing shaped to reduce footprint & respond to immediate context

03 Cohesive external landscape and facilities developed

View across Scott Park

Aerial view from South East

Approach from Livingstone Place

Aerial view from South West

Have your say...
Visit our virtual consultation space online and complete our feedback form or email comments directly to the email address below, responses are welcome until Thursday 19th August 2021.
Online: www.scotborders.gov.uk/galacampus **Email:** galacampus@scotborders.gov.uk

Scottish Borders COUNCIL

Galashiels Community Campus Pre Application Consultation

Vibrant community facilities

Helping teaching spaces

Peaceful kitchen and outdoor terrace

Building Accommodation

- Second Floor
 - Teaching Clusters
- First Floor
 - Teaching Clusters
 - Specialist Learning
 - Shared Spaces
 - Pupil Support
 - Sport
- Ground Floor
 - Specialist Learning
 - Shared Spaces
 - Pupil Support
 - Sport

Have your say...
Visit our virtual consultation space online and complete our feedback form or email comments directly to the email address below, responses are welcome until Thursday 19th August 2021.
Online: www.scotborders.gov.uk/galacampus **Email:** galacampus@scotborders.gov.uk

Scottish Borders COUNCIL