



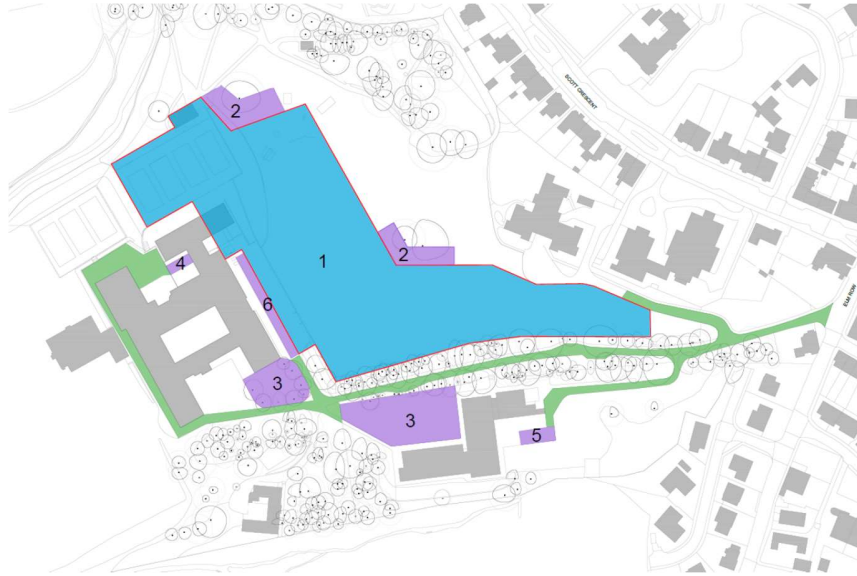
This newsletter is intended to keep you informed about progress of the new Galashiels Academy Project.

Updated News ...

The enabling works for the brand-new Galashiels Academy commenced as planned on 6th March and Scottish Borders Council and its development partner Hub South East, alongside Morrison Construction as the Tier 1 Contractor are ensuring that there is little or no disruption to the schools and surrounding area's day to day running.

The enabling works are required to facilitate the new building footprint, which in turn allow us to get the site ready for the main construction.

The works completed thus far include temporary site establishment for the localised work areas, new fire exits for the CDT department, archaeology evaluation works in the main Scott park new building footprint, tree protections and removals, ecological surveys and protective measures including installation of new bat boxes, asbestos removals & demolition to part of existing school CDT wing.



The above site plan indicates the general areas we will still be working in during the remainder of the enabling phase of this project. Areas are now fully fenced off to ensure the safety of school pupils, staff and the wider community.

Access in and around the School and park

The path network from the bus drop off area towards the main school access road past the nursing home and church is working well for all children and visitors, allowing access to the school from the bus drop off area. We would urge everyone to use this route and not to cut through or climb school fences beyond the tennis courts. As a reminder, this will remain in place during the main construction works once they begin (see routes below).



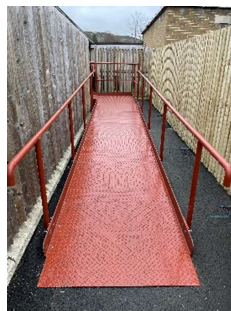
- █ Location of site boundary
After Feb 2023 mid term
break- no access to the school
- █ Access route to school

Looking Ahead

Enabling works will carry on until the start of May 2023 and will include the completion of additional playground/muster points areas, removal of the Scott park play park equipment, secure hoarding between existing school and main site area, drainage diversions, alterations to traffic islands at entrance to Elm row and formation of the main site access road opposite the church.

At this point the site will have been prepared for the main works and once all the contracts have been signed, we will issue a newsletter to advise you when this next phase will begin.

Information boards will be placed at a location that will be fully accessible for the public at the start of main works, so we can always share up to date information about this great new project and the community engagement we will be undertaking.



Safe Environment for All

We will always try to minimise any noise and disruption to the local area. The project will be registered under the Considerate Constructors Scheme and we have strict rules in place to manage parking and site access. We will continually monitor the roads and access points around the site, and we will always try to advise of any impacts our works may have on the local areas for any length of time.

Work in the Community

Throughout this project there will be a range of social value initiatives delivered to make sure local individuals and businesses can get involved. We are currently developing plans and these will include curriculum support for schools, higher and further education, alongside work experience, apprenticeships etc. Our project team will be involved in activities on site and in the local area and we will keep you up to date with these on the project site boards and in future editions of this newsletter.

More Information

For further information on the project or work on site, please contact our Senior Site Manager Jonathan Dunn on 07936 372003

For Social Impact information please contact our Communities & Social Impact Manager – Conor Gray on 0141 557 6500 or conor.gray@gallifordtry.co.uk

#morrisonconstruction

#loveconstruction



