

General Palette : Moodboard

Calming... Natural ... Welcoming



Apartment Doors with skirting and arcitraves used to highlight doorway.

Planned Activities

The focus for the remainder of this year is on the following areas:

- completing the planning process
- planning for the enabling work to allow groundworks, to level out the site, drainage, foundations and floor slabs to begin early 2025. This work will be undertaken by SBC Contracts who have completed the work on the access road and are currently carrying out work on the pumping station at Lowood.
- consulting and refining the interior specification

The Landscape

Each building block will have its own communal garden and a strong visual connection between internal communal spaces and gardens, richly planted to strengthen the sense of tranquillity.



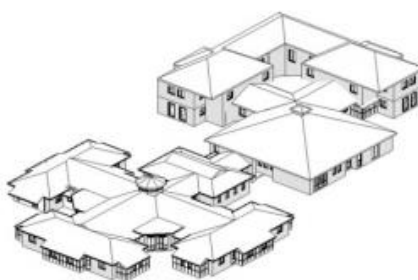
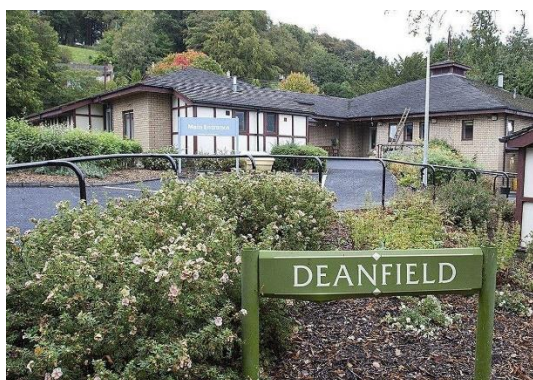
Lowood Development Programme

The Tweedbank Care Village is part of the wider SBC Lowood Development Programme which comprises of 5 distinct parts:

- Infrastructure Phase 1 - complete.
- The Care Village.
- Lowood residential development.
- Extension to Tweedside Park (office space).
- Lowood business/ employment development.

These are all at differing stages from conceptual through to pre-construction and will be developed over the coming years. Updates on these works will be shared through a variety of channels as work on the Lowood Development Programme progresses.

Hawick Update



Needs Assessment

We are pleased to announce that we have commissioned a comprehensive needs assessment from 'Buchan and Associates' and 'Indigo House' to evaluate the level of care required in the Teviot and Liddesdale locality and across the wider Scottish Borders. This important work is currently underway and is expected to be completed by January 2025.

The findings will play a vital role in shaping the planning for the Hawick Care Village and the broader commissioning of Adult Social Care and Health Services across the Borders. Following the completion of the needs assessment, we will engage in detailed planning, design and further community engagement.

Collaborative Planning Efforts

In our planning process for both the Hawick and Tweedbank Care Villages, we have collaborated with a range of organisations, including Stirling University, the Care Inspectorate, SBC Adult Social Care, SBC Environmental Health, NHS Borders, the Scottish Fire and Rescue Service and Scottish Ambulance Service. Focusing on Hawick, we have also engaged with staff and residents at Deanfield and have been working closely with Eildon Housing Association who own the site at Stirches currently identified for the Hawick Care Village and Extra Care Housing.

This collaboration is essential to ensure we design quality care services to meet future needs, with a seamless interface with Eildon in the delivery of their Extra Care Housing at the Stirches site which incorporates the valuable feedback that we have received from the local public to date.

Future-Ready Care Services

The development of the Hawick Care Village presents an excellent opportunity to commission services that meet the future needs of our population across Teviot and Liddesdale. The concept of the Hawick Care Village supports unique needs, lifestyles and personal preferences for living, care and well-being for people living mainly with dementia and frailty. The focus is on possibility rather than disability and will be supported by 24-hour care, delivered by trained professionals.

We look forward to sharing more updates as we continue to progress with this exciting project.

More Information

- If you have any questions or feedback on the update and progress, please email: residentialcareprogramme@scotborders.gov.uk
- Background information and updates are also available at: www.scotborders.gov.uk/carevillageprogramme