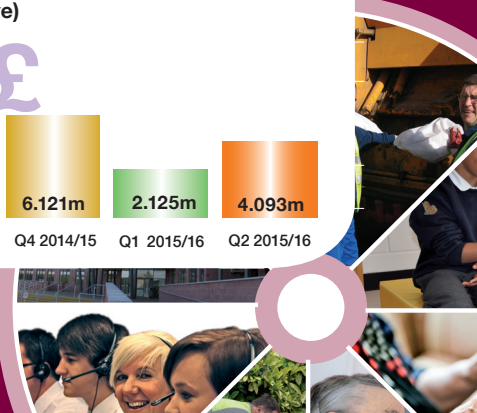
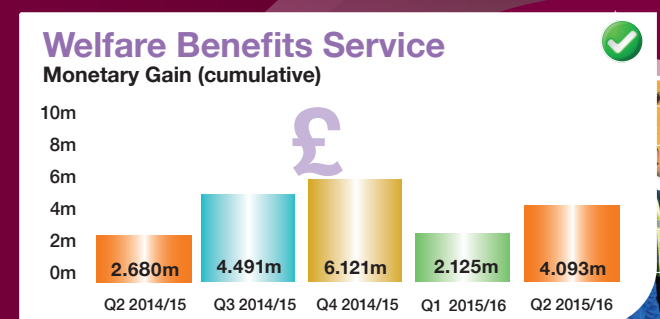
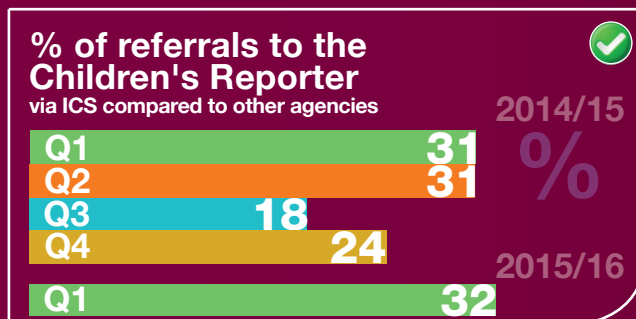
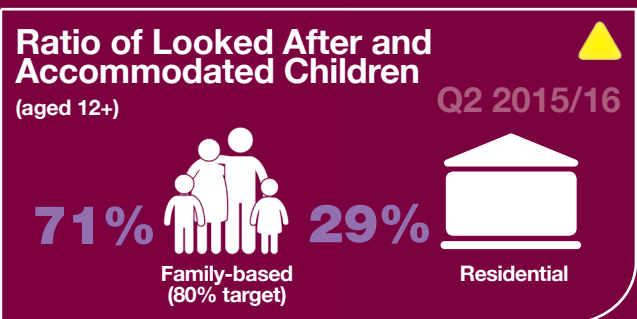
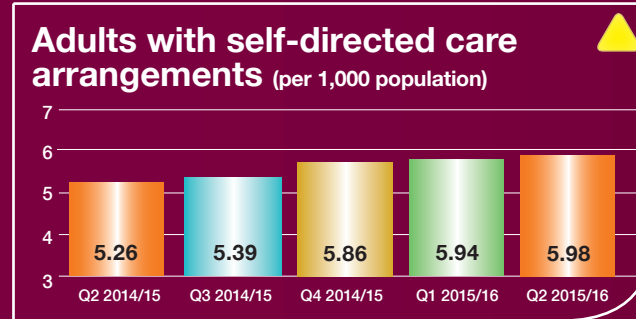
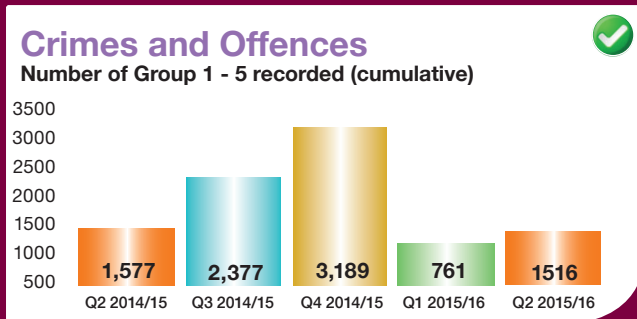
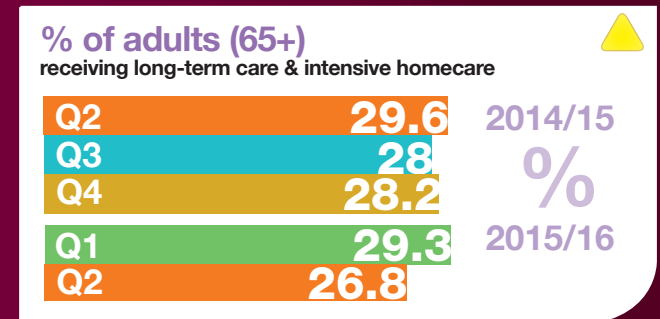
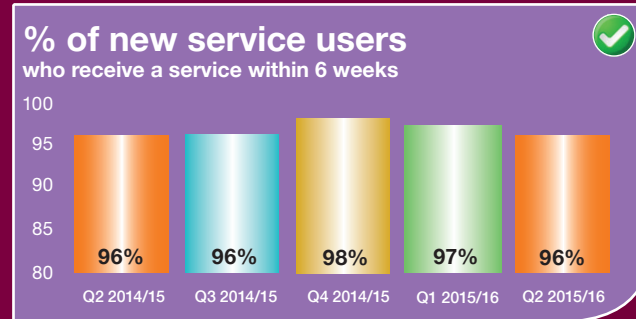
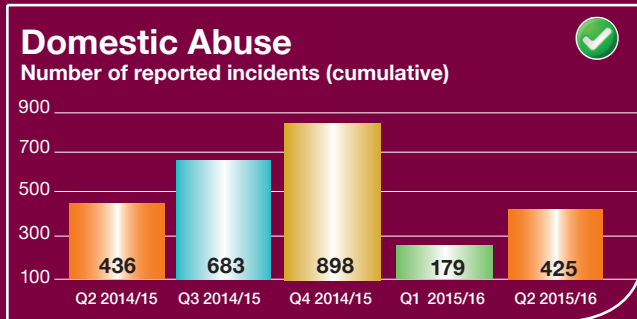


PROVIDE HIGH QUALITY SUPPORT, CARE AND PROTECTION TO CHILDREN, YOUNG PEOPLE, ADULTS, FAMILIES, AND OLDER PEOPLE

HOW ARE WE DOING?



Appendix 1: Scottish Borders Council Executive Committee – Quarterly Public Performance Report, December 2015 (Q2 2015/16)

Corporate Priority 3: Provide high quality support, care and protection to children, young people, adults, families and older people

Short Name	Trend Chart	Current Value	Commentary	Long Term Trend	Status against Target	Managed By												
What % of people aged 65+ receive their care at home?	<p>CP03-P02P What % of people aged 65+ receive their care at home?</p> <table border="1"> <caption>Data for CP03-P02P</caption> <thead> <tr> <th>Quarter</th> <th>Value (%)</th> </tr> </thead> <tbody> <tr> <td>Q2 2014/15</td> <td>29.6%</td> </tr> <tr> <td>Q3 2014/15</td> <td>28.0%</td> </tr> <tr> <td>Q4 2014/15</td> <td>28.2%</td> </tr> <tr> <td>Q1 2015/16</td> <td>29.3%</td> </tr> <tr> <td>Q2 2015/16</td> <td>26.8%</td> </tr> </tbody> </table> <p>Legend: ■ Quarters, ■ Target (Quarters), — Family Group (previous yr) - Av., — SBC (previous yr) - Av., — Scotland (previous yr) - Av.</p>	Quarter	Value (%)	Q2 2014/15	29.6%	Q3 2014/15	28.0%	Q4 2014/15	28.2%	Q1 2015/16	29.3%	Q2 2015/16	26.8%	26.8%	<p>How are we performing: In line with new business plans this indicator will, in the near future, be replaced with new measurements providing a clearer indication of performance within this area. The target has been revised downwards from Q1 2015/16, reflecting the move to Self-Directed Support (SDS)</p> <p>Actions we are taking to improve/maintain performance: Further investigation to identify the best indicators which will focus efforts on how to design and delivery a home care service that can help prevent those most at risk of unplanned hospital admissions will be completed within the next quarter.</p>			Elaine Torrance
Quarter	Value (%)																	
Q2 2014/15	29.6%																	
Q3 2014/15	28.0%																	
Q4 2014/15	28.2%																	
Q1 2015/16	29.3%																	
Q2 2015/16	26.8%																	
The number of adults with self-directed care (SDS) arrangements per 1,000 population	<p>CP03-P04P The number of adults with self-directed care arrangements per 1,000 population</p> <table border="1"> <caption>Data for CP03-P04P</caption> <thead> <tr> <th>Quarter</th> <th>Value (per 1,000)</th> </tr> </thead> <tbody> <tr> <td>Q2 2014/15</td> <td>5.26</td> </tr> <tr> <td>Q3 2014/15</td> <td>5.39</td> </tr> <tr> <td>Q4 2014/15</td> <td>5.86</td> </tr> <tr> <td>Q1 2015/16</td> <td>5.94</td> </tr> <tr> <td>Q2 2015/16</td> <td>5.98</td> </tr> </tbody> </table> <p>Legend: ■ Quarters, ■ Target (Quarters), — Family Group (previous yr) - Av., — SBC (previous yr) - Av., — Scotland (previous yr) - Av.</p>	Quarter	Value (per 1,000)	Q2 2014/15	5.26	Q3 2014/15	5.39	Q4 2014/15	5.86	Q1 2015/16	5.94	Q2 2015/16	5.98	5.98	<p>How are we performing: This PI continues to increase with all new individuals being supported using SDS and existing clients are being moved from traditional methods to SDS. April 2015 was the first year anniversary of the introduction of the SDS approach and by 2017 all individuals are expect to be working with SDS.</p> <p>Actions we are taking to improve/maintain performance: Additional reporting of existing clients on traditional methods is being used to assist the movement towards all clients using the SDS approach. Any reassessments are conducted using the SDS approach and the movement of this PI in an upward direction continues to be our focus.</p>			Elaine Torrance
Quarter	Value (per 1,000)																	
Q2 2014/15	5.26																	
Q3 2014/15	5.39																	
Q4 2014/15	5.86																	
Q1 2015/16	5.94																	
Q2 2015/16	5.98																	

Appendix 1: Scottish Borders Council Executive Committee – Quarterly Public Performance Report, December 2015 (Q2 2015/16)

Short Name	Trend Chart	Current Value	Commentary	Long Term Trend	Status against Target	Managed By												
What % of people contacting Social Work receive a service within 6 weeks of their assessment?	<p>CP03-P28P What % of people contacting Social Work receive a service within 6 weeks of their assessment?</p> <table border="1"> <caption>Data for CP03-P28P</caption> <thead> <tr> <th>Quarter</th> <th>Value (%)</th> </tr> </thead> <tbody> <tr> <td>Q2 2014/15</td> <td>96%</td> </tr> <tr> <td>Q3 2014/15</td> <td>96%</td> </tr> <tr> <td>Q4 2014/15</td> <td>98%</td> </tr> <tr> <td>Q1 2015/16</td> <td>97%</td> </tr> <tr> <td>Q2 2015/16</td> <td>96%</td> </tr> </tbody> </table> <p>Legend: ■ Quarters, ■ Target (Quarters), — Family Group (previous yr) - Av., — SBC (previous yr) - Av., — Scotland (previous yr) - Av.</p>	Quarter	Value (%)	Q2 2014/15	96%	Q3 2014/15	96%	Q4 2014/15	98%	Q1 2015/16	97%	Q2 2015/16	96%	96%	<p>How are we performing: Over 95% of people contacting Social Work receive a service within 6 weeks of assessment. This figure has remained consistently over 95% for the past 2 years.</p> <p>Actions we are taking to improve/maintain performance: Continued maintenance and development of reporting within this PI to further enhance and identify any issues has allowed the PI to remain above target. Early recognition of any drop in service is quickly picked up and resolved.</p>			Elaine Torrance
Quarter	Value (%)																	
Q2 2014/15	96%																	
Q3 2014/15	96%																	
Q4 2014/15	98%																	
Q1 2015/16	97%																	
Q2 2015/16	96%																	
What % of children (aged 12+) are accommodated with family rather than residential placements?	<p>CP03-P06P What % of children (aged 12+) are accommodated with family rather than residential placements?</p> <table border="1"> <caption>Data for CP03-P06P</caption> <thead> <tr> <th>Quarter</th> <th>Value (%)</th> </tr> </thead> <tbody> <tr> <td>Q2 2014/15</td> <td>74%</td> </tr> <tr> <td>Q3 2014/15</td> <td>73%</td> </tr> <tr> <td>Q4 2014/15</td> <td>74%</td> </tr> <tr> <td>Q1 2015/16</td> <td>73%</td> </tr> <tr> <td>Q2 2015/16</td> <td>71%</td> </tr> </tbody> </table> <p>Legend: ■ Quarters, ■ Target (Quarters), — Family Group (previous yr) - Av., — SBC (previous yr) - Av., — Scotland (previous yr) - Av.</p>	Quarter	Value (%)	Q2 2014/15	74%	Q3 2014/15	73%	Q4 2014/15	74%	Q1 2015/16	73%	Q2 2015/16	71%	71%	<p>How are we performing: Small downward fluctuation within this indicator.</p> <p>Actions we are taking to improve/maintain performance: Continued action is underway to increase the number of children in family-based placements in comparison to residential. This includes increasing kinship care (which has increased steadily over the last 4 years) and the ongoing recruitment of foster carers. The target of 80% is ambitious and continues to drive this performance area.</p>			Ann Blackie
Quarter	Value (%)																	
Q2 2014/15	74%																	
Q3 2014/15	73%																	
Q4 2014/15	74%																	
Q1 2015/16	73%																	
Q2 2015/16	71%																	

Appendix 1: Scottish Borders Council Executive Committee – Quarterly Public Performance Report, December 2015 (Q2 2015/16)

Short Name	Trend Chart	Current Value	Commentary	Long Term Trend	Status against Target	Managed By																		
What % of referrals to the Scottish Children's Reporter Administration are made through Integrated Children's Services?	<p>CP03-P30P What % of referrals to the Scottish Children's Reporter Administration are made through Integrated Children's Services?</p> <table border="1"> <caption>Data for CP03-P30P</caption> <thead> <tr> <th>Quarter</th> <th>Actual (%)</th> <th>Target (%)</th> </tr> </thead> <tbody> <tr> <td>Q1 2014/15</td> <td>31%</td> <td>20%</td> </tr> <tr> <td>Q2 2014/15</td> <td>31%</td> <td>20%</td> </tr> <tr> <td>Q3 2014/15</td> <td>18%</td> <td>20%</td> </tr> <tr> <td>Q4 2014/15</td> <td>24%</td> <td>20%</td> </tr> <tr> <td>Q1 2015/16</td> <td>32%</td> <td>20%</td> </tr> </tbody> </table> <p>Legend: Blue bars = Quarters; Red square = Target (Quarters); Red line = Family Group (previous yr) - Av.; Yellow line = SBC (previous yr) - Av.; Green line = Scotland (previous yr) - Av.</p>	Quarter	Actual (%)	Target (%)	Q1 2014/15	31%	20%	Q2 2014/15	31%	20%	Q3 2014/15	18%	20%	Q4 2014/15	24%	20%	Q1 2015/16	32%	20%	32%	<p>Observations: Q1 has seen a rise in the number of referrals by social work.</p> <p>Note: One quarter lag in data.</p>			Ann Blackie
Quarter	Actual (%)	Target (%)																						
Q1 2014/15	31%	20%																						
Q2 2014/15	31%	20%																						
Q3 2014/15	18%	20%																						
Q4 2014/15	24%	20%																						
Q1 2015/16	32%	20%																						
How many people have received advice or advocacy through Welfare Benefits Service? (cumulative)	<p>CP03-P35P How many people have received advice or advocacy through Welfare Benefits Service? (cumulative)</p> <table border="1"> <caption>Data for CP03-P35P</caption> <thead> <tr> <th>Year</th> <th>Cumulative Count</th> </tr> </thead> <tbody> <tr> <td>2013/14</td> <td>~600</td> </tr> <tr> <td>2014/15</td> <td>~1200</td> </tr> <tr> <td>2015/16</td> <td>~2300</td> </tr> </tbody> </table> <p>Legend: Light green = 2013/14; Medium green = 2014/15; Dark green = 2015/16</p>	Year	Cumulative Count	2013/14	~600	2014/15	~1200	2015/16	~2300	1,379	<p>Observations: The statistics remain high although the percentage <i>above</i> target has reduced from 1st quarter. This would normally be expected given that this period covers the summer leave but interestingly when the statistics are reviewed for July alone they are the highest month to date.</p> <p>There have been an increased number of Tribunals and officers are dealing with an increasing number of <i>complex</i> cases as well as advising on a number of claims for Jobseekers following redundancies.</p>			Cathie Fancy										
Year	Cumulative Count																							
2013/14	~600																							
2014/15	~1200																							
2015/16	~2300																							

Appendix 1: Scottish Borders Council Executive Committee – Quarterly Public Performance Report, December 2015 (Q2 2015/16)

Short Name	Trend Chart	Current Value	Commentary	Long Term Trend	Status against Target	Managed By
How much money was gained for customers of the Welfare Benefits Service? (cumulative)	<p>CP03-P36P How much money was gained for customers of the Welfare Benefits Service? (cumulative)</p>	£4,093,388.00	In addition to the work our Welfare Benefits Service does, our contract with CAB is also an important part of offering advice, and they have approximately 250 live benefits every quarter, with just over £366k in welfare benefit gains achieved in Q2.			Cathie Fancy
How many incidents of domestic abuse are reported to Police Scotland? (cumulative)	<p>CP03-P37P How many incidents of domestic abuse are reported to Police Scotland? (cumulative)</p>	425	<p>How are we performing: 9 fewer reported domestic abuse incidents than at the same point in 2014/15, which equates to a 2% reduction. The reduction in reporting of domestic abuse incidents in the current year is reflected across the Lothians and Scottish Borders region.</p> <p>Actions we are taking to improve/maintain performance: The Pathway Project continues to be delivered addressing the needs of high risk victims, in addition to providing longer term community support and a groupwork programme for children and their mothers. A presentation on the overall findings of an external evaluation and a set of recommendations was given to the Pathway Joint Advisory Board on 28th October 2015. The final report, after comments have been considered, is expected end of November 2015.</p> <p>The Pathway project funding has been extended by Big Lottery and Scottish Government to March 2016, this allows continuation of all three services - Domestic Abuse Advocacy Support service, Domestic Abuse Community</p>			Tony Hodges

Appendix 1: Scottish Borders Council Executive Committee – Quarterly Public Performance Report, December 2015 (Q2 2015/16)

Short Name	Trend Chart	Current Value	Commentary	Long Term Trend	Status against Target	Managed By																				
			<p>Support Service, and the CEDAR Groupwork programme. There is currently no information from either funder as to the future availability of funding post 2016. The extension was based on excellent performance by the Pathway project and across all three services all targets and outcomes being exceeded. All three services are working on developing Exit Strategies.</p> <p>Multi-agency risk assessment (MARAC) has now been implemented, with the MARAC Coordinator post secured to March 2016. MARACs continue to be held every 4 weeks, and on average discuss 8 high risk cases.</p> <p>An early Stage 1 bid has been made to the Big Lottery for CEDAR as it fits with their 21st Century Life programme, this was then invited to proceed to a Stage 2 bid. It is expected that the full Stage 2 bid will go in before Xmas, and a decision will be given within 16 weeks of submission.</p>																							
<p>How many crimes and offences are recorded by Police Scotland? (cumulative)</p>	<p>CP03-P39P How many crimes and offences are recorded by Police Scotland? (cumulative)</p> <table border="1"> <caption>CP03-P39P How many crimes and offences are recorded by Police Scotland? (cumulative)</caption> <thead> <tr> <th>Year</th> <th>Q1</th> <th>Q2</th> <th>Q3</th> <th>Q4</th> </tr> </thead> <tbody> <tr> <td>2013/14</td> <td>~800</td> <td>~1,700</td> <td>~2,450</td> <td>~3,200</td> </tr> <tr> <td>2014/15</td> <td>~750</td> <td>~1,600</td> <td>~2,350</td> <td>~3,150</td> </tr> <tr> <td>2015/16</td> <td>~750</td> <td>~1,550</td> <td>~2,300</td> <td>~3,100</td> </tr> </tbody> </table>	Year	Q1	Q2	Q3	Q4	2013/14	~800	~1,700	~2,450	~3,200	2014/15	~750	~1,600	~2,350	~3,150	2015/16	~750	~1,550	~2,300	~3,100	<p>1,516</p>	<p>How are we performing: Quarter 2 shows an overall decrease in crime by 57 offences (3.6%) compared to the same time period last year. However, there has been a month on month reduction in crimes since May 2015 and if this trend continues we should be on course to meet our target for the year.</p> <p>Actions we are taking to improve/maintain performance Continued delivery of the Local Policing Plan and a recent refresh of local Multi-Member Ward Plans have identified local issues and concerns in the community that will be tackled in the coming year. This includes all aspects of reported crime. Partnership work continues with a focus on preventing violence against women, reducing Antisocial Behaviour, Injury Prevention and reducing the impact of drugs and alcohol in our communities.</p>			<p>Tony Hodges</p>
Year	Q1	Q2	Q3	Q4																						
2013/14	~800	~1,700	~2,450	~3,200																						
2014/15	~750	~1,600	~2,350	~3,150																						
2015/16	~750	~1,550	~2,300	~3,100																						

Appendix 1: Scottish Borders Council Executive Committee – Quarterly Public Performance Report, December 2015 (Q2 2015/16)

Short Name	Trend Chart	Current Value	Commentary	Long Term Trend	Status against Target	Managed By												
How much money is seized by Police Scotland? (cumulative)	<p>CP03-P14P How much money is seized by Police Scotland? (cumulative)</p> <table border="1"> <caption>Cumulative Cash Seizures by Police Scotland</caption> <thead> <tr> <th>Quarter</th> <th>Value (£)</th> </tr> </thead> <tbody> <tr> <td>Q2 2014/15</td> <td>1,519,753.00</td> </tr> <tr> <td>Q3 2014/15</td> <td>1,525,415.00</td> </tr> <tr> <td>Q4 2014/15</td> <td>1,392,235.00</td> </tr> <tr> <td>Q1 2015/16</td> <td>107,923.00</td> </tr> <tr> <td>Q2 2015/16</td> <td>107,923.00</td> </tr> </tbody> </table>	Quarter	Value (£)	Q2 2014/15	1,519,753.00	Q3 2014/15	1,525,415.00	Q4 2014/15	1,392,235.00	Q1 2015/16	107,923.00	Q2 2015/16	107,923.00	£107,923.00	<p>Observations:</p> <p>No further cash seizures or restraints in quarter 2.</p> <p>Proceeds of crime money is distributed to local areas via the "Cashback for Communities" Scheme, focused on youth diversionary activity.</p> <p>The delivery agent for Cashback for Communities, Inspiring Scotland, has been contacted to ask about flexibility with the programme moving forward to allow us to use money to meet local need.</p> <p>A response has been received confirming that all projected funds to 2017 will be directed towards sporting, cultural and employment programmes for children and young people. Any future change of direction after 2017 is unlikely to be considered before 2016.</p>			Tony Hodges
Quarter	Value (£)																	
Q2 2014/15	1,519,753.00																	
Q3 2014/15	1,525,415.00																	
Q4 2014/15	1,392,235.00																	
Q1 2015/16	107,923.00																	
Q2 2015/16	107,923.00																	