

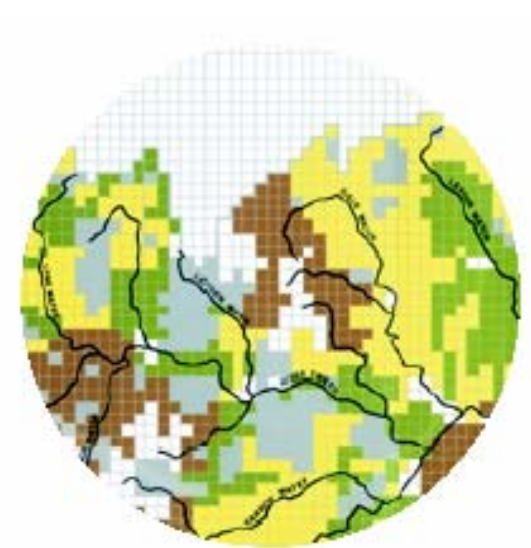
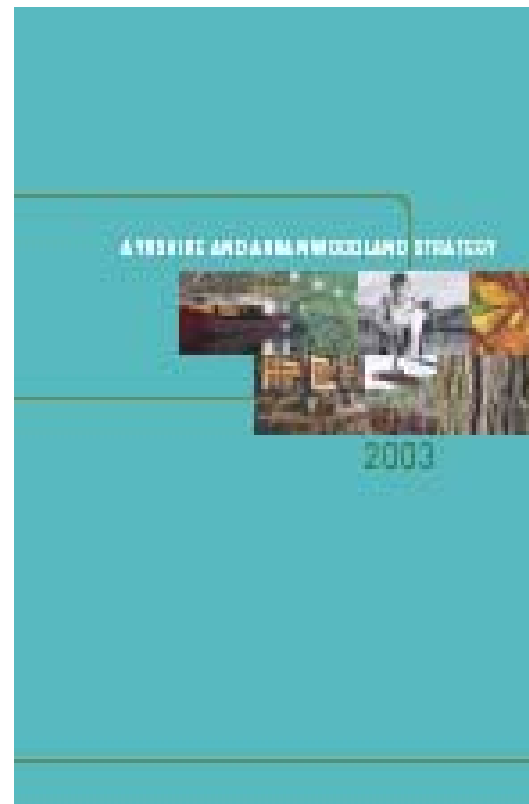
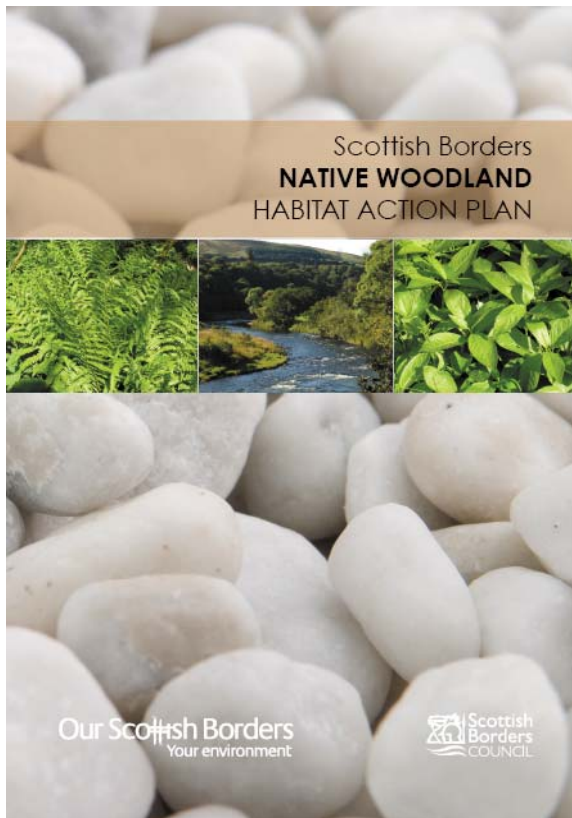
# **Interim review of Scottish Borders Woodland Strategy- A preview**

**Presentation to  
Scottish Borders LBAP Annual Forum  
Tuesday 15 November 2011**

**Andy Tharme (Ecology Officer)  
Environment & Infrastructure  
Scottish Borders Council**

# ORIGINS OF SCOTTISH BORDERS WOODLAND STRATEGY

## Scottish Borders LBAP Woodland Habitat Working Group



## Background

- **Scottish Borders  
Indicative Forestry Strategy 1993**
- **Scottish Executive guidance  
on revising IFS circular 9/1999  
more focused on opportunities**
- **Ayrshire & Arran Woodland Strategy  
2003**
- **Restoring Borders Woodland, BFT  
conference 2003**

# Purpose and Scope

**To provide a planning tool and policy guidance for Scottish Borders Council/ New Ways Forward Structure Plan.**

**To provide a framework policy document for the development of forestry in Scottish Borders that will be widely supported and help secure resources to deliver the Strategy's vision.**

**To provide a regional expression of the Scottish Forestry Strategy.**

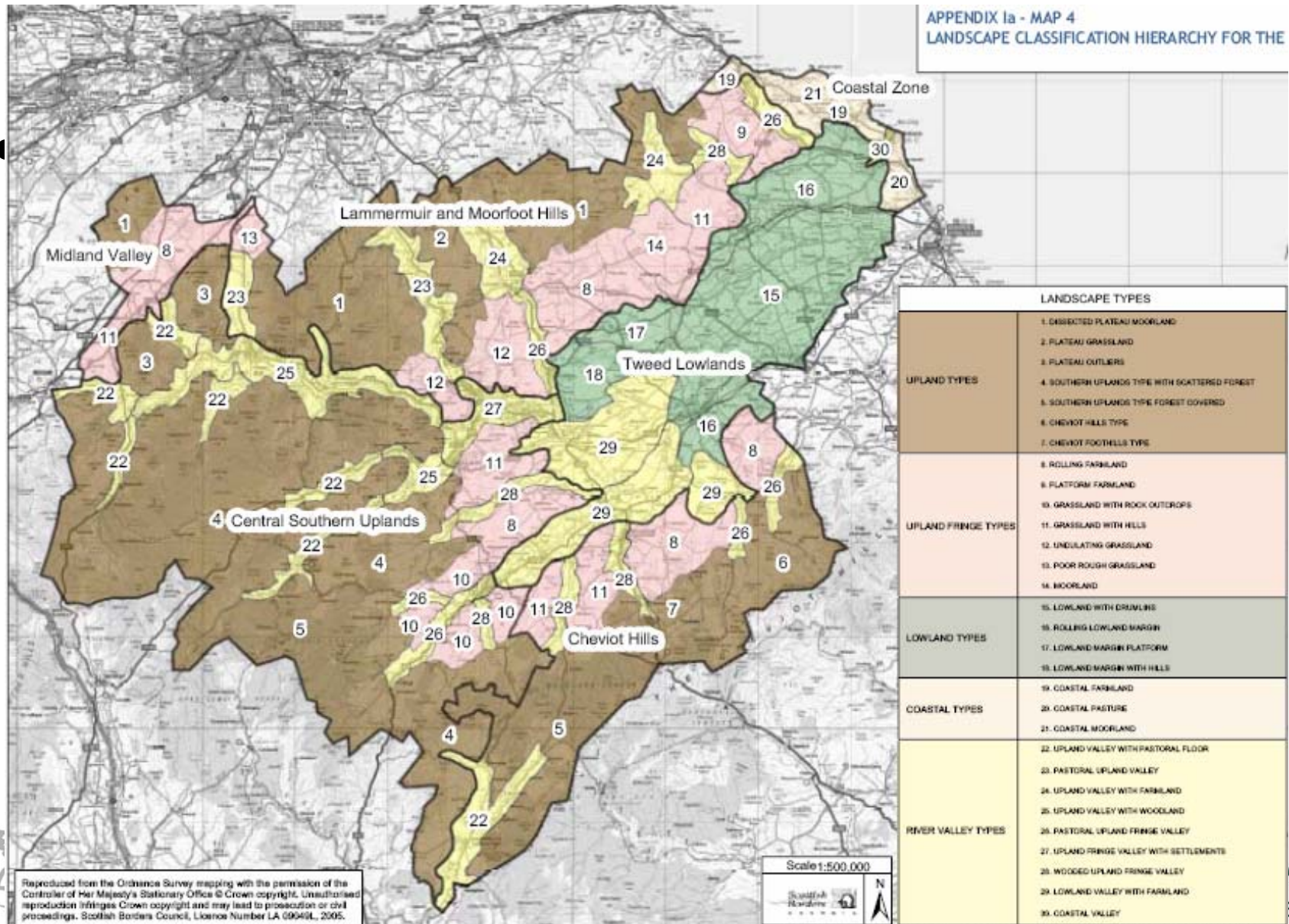
**To assist the Forestry Commission Scotland in considering the suitability of applications for Grant assistance for planting and management of woodlands.**

# Strategic Themes

- 1. Contributing to the Sustainable Development of the Scottish Borders Economy**
- 2. Expanding and Diversifying the Scottish Borders woodland resource**
- 3. Protecting and Enhancing the Scottish Borders landscape, biodiversity and cultural heritage**
- 4. The role of trees, woodlands and forests in contributing to the quality of life in the Scottish Borders**
- 5. Connecting people and communities with Scottish Borders trees, woodlands and forests**

# Borders Landscape Assessment

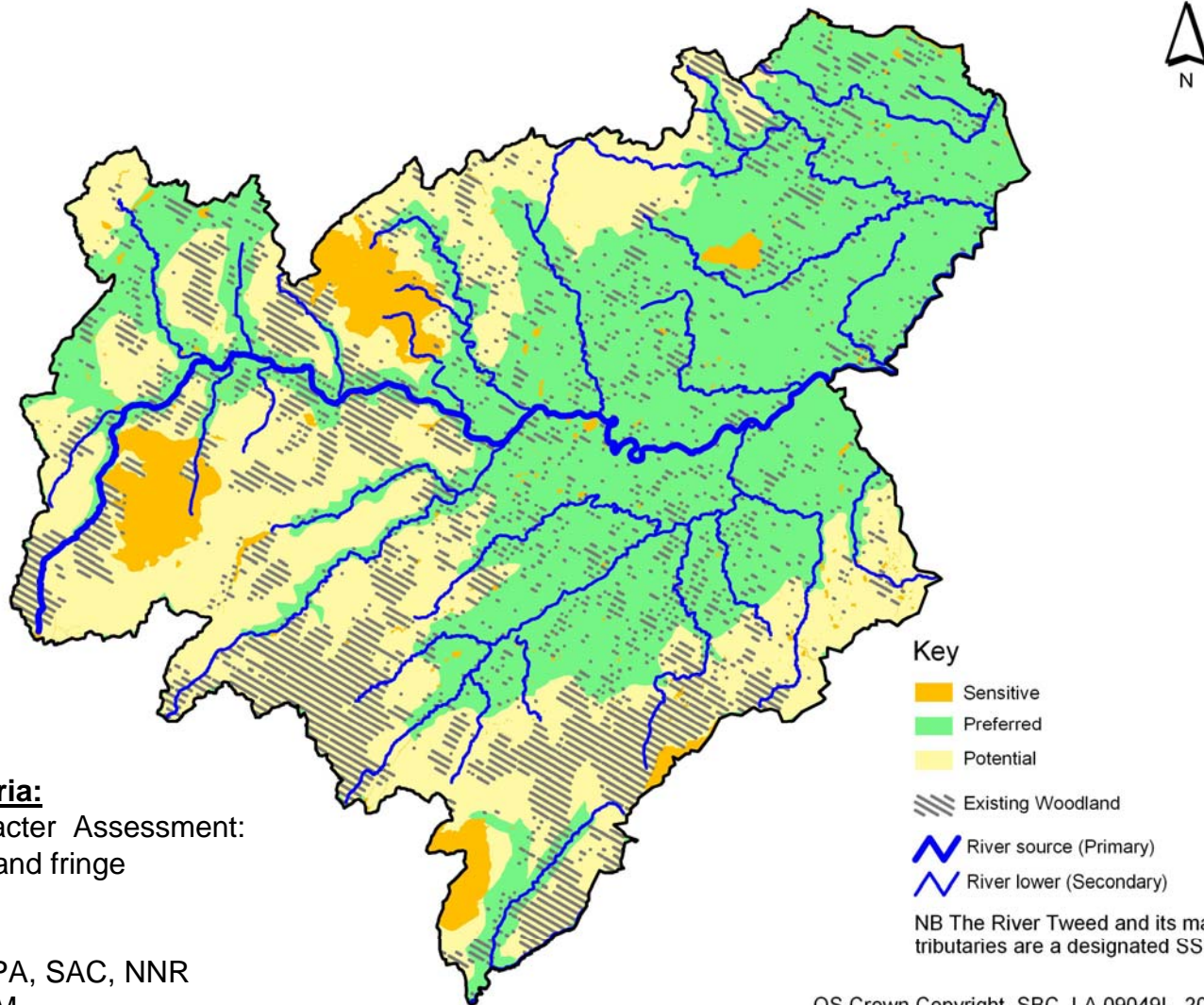
APPENDIX 1a - MAP 4  
LANDSCAPE CLASSIFICATION HIERARCHY FOR THE



# Lowland/Upland Fringe Woodlands



# Lowland / Upland Fringe Woodlands



## **Preference criteria:**

Landscape Character Assessment:  
Lowland and Upland fringe

## **Sensitivity:**

Wildlife: SSSI, SPA, SAC, NNR  
Archaeology: SAM

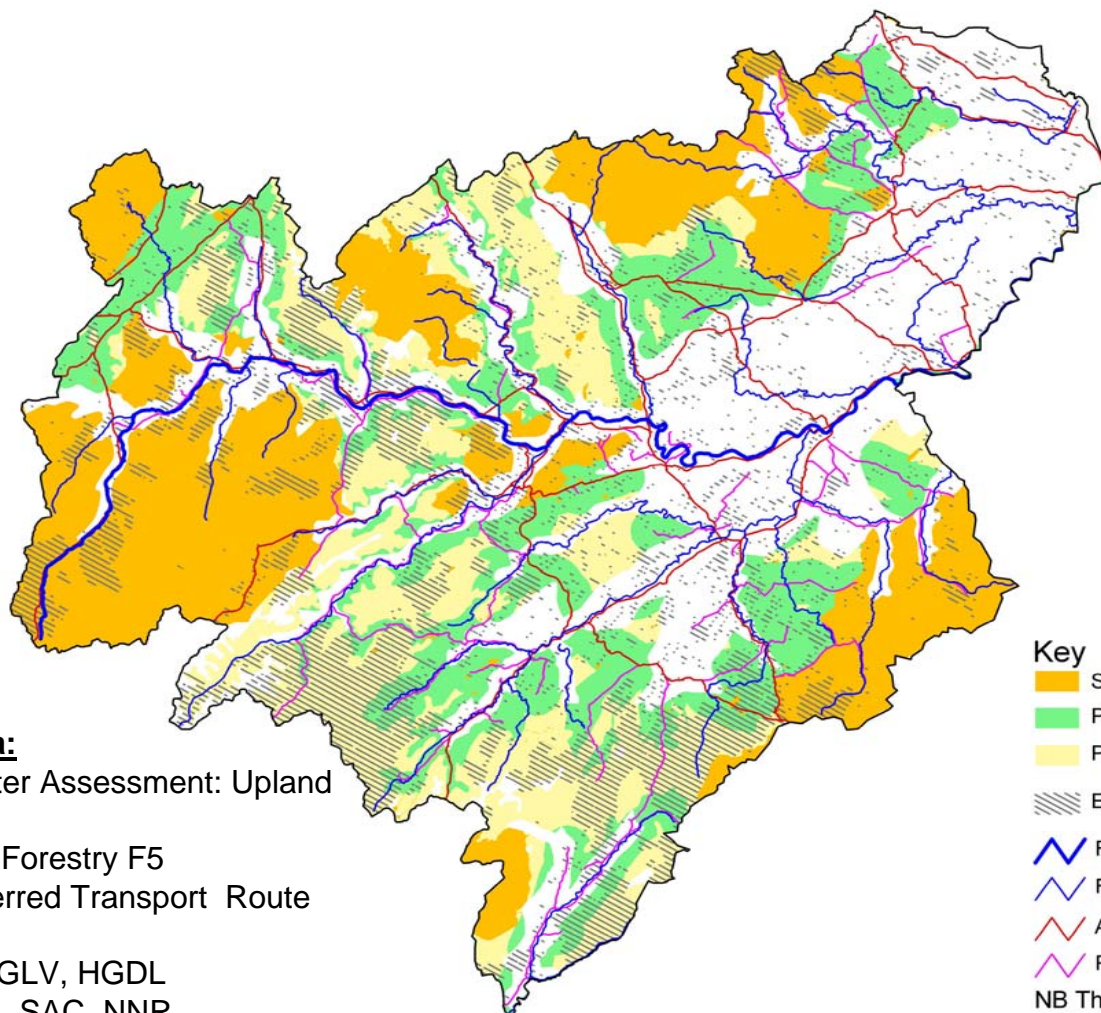
OS Crown Copyright, SBC, LA 09049L, 2005.



# Upland/Upland Fringe Forests & Woodlands



# Upland / Upland Fringe Forests & Woodlands



## Key

- Sensitive
- Preferred
- Potential
- Existing Woodland
- River source (Primary)
- River lower (Secondary)
- A Class Roads
- Preferred Routes

NB The River Tweed and its main tributaries are a designated SSSI.

## Preference criteria:

Landscape Character Assessment: Upland & Upland Fringe

Land Capability for Forestry F5

Within 2km of Preferred Transport Route

## Sensitivity:

Landscape: NSA, AGLV, HGDL

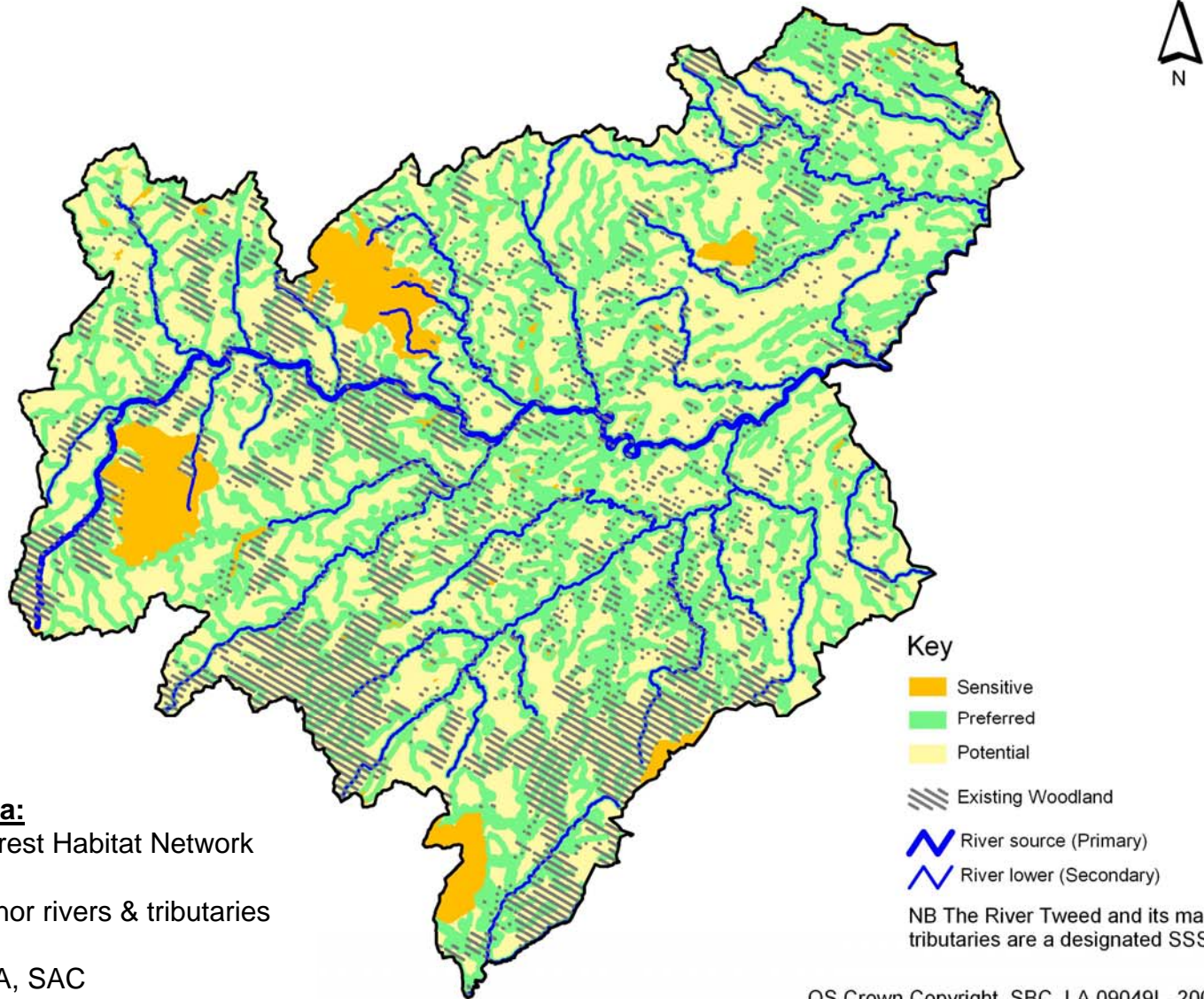
Wildlife: SSSI, SPA, SAC, NNR,

Archaeology: SAM

# Native and Riparian Woodlands



# Native / Riparian Woodlands



## **Preference criteria:**

Within 500m of Forest Habitat Network & major rivers

Within 300m of minor rivers & tributaries

## **Sensitivity:**

Wildlife: SSSI, SPA, SAC

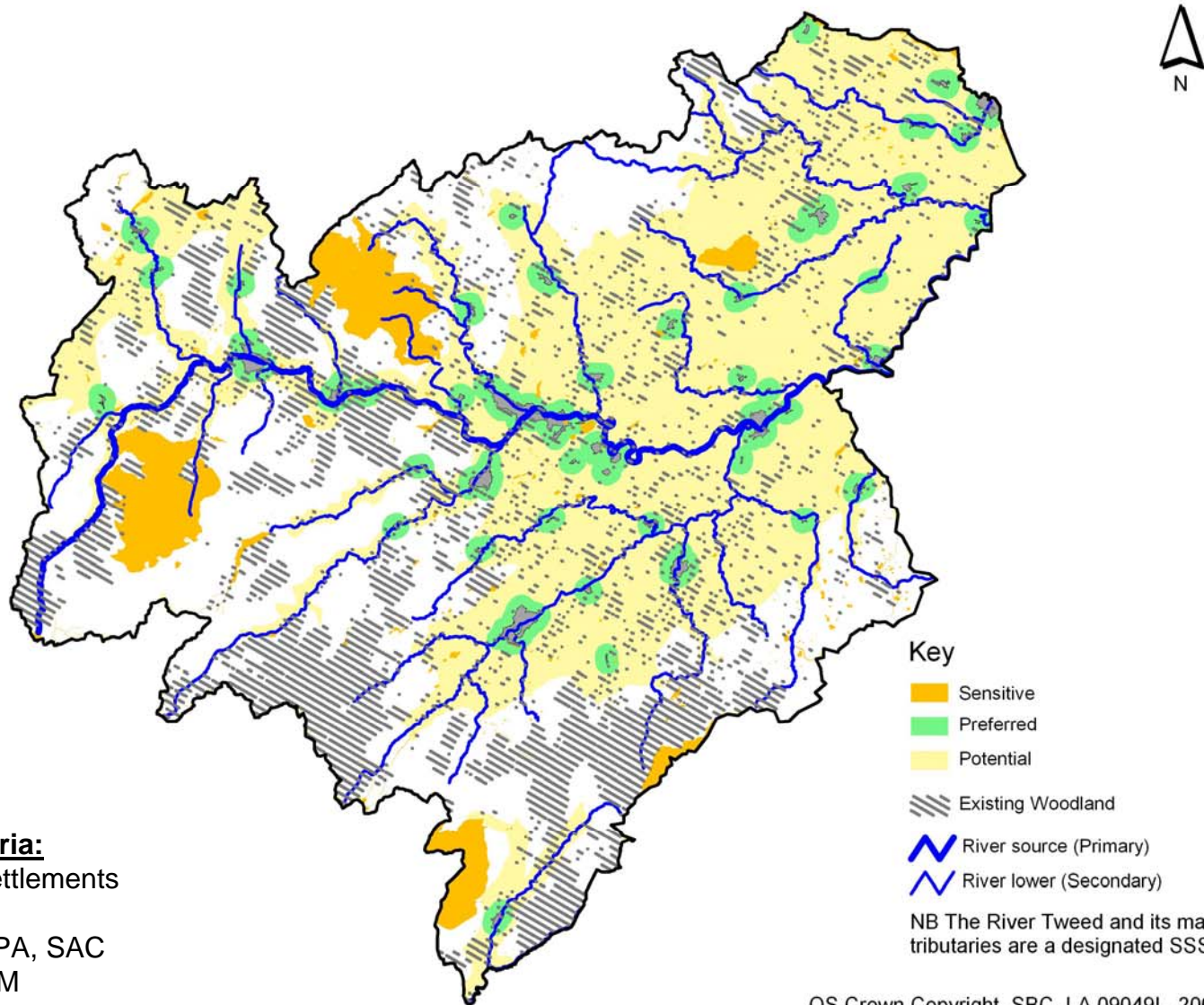
Archaeology: SAM

OS Crown Copyright, SBC, LA 09049L, 2005.

# Urban Fringe / Community Woodland



# Urban Fringe / Community Woodlands



**Preference criteria:**

Within 1 km of settlements

**Sensitivity:**

Wildlife: SSSI, SPA, SAC

Archaeology: SAM

OS Crown Copyright, SBC, LA 09049L, 2005.

# Scottish Borders Woodland Strategy

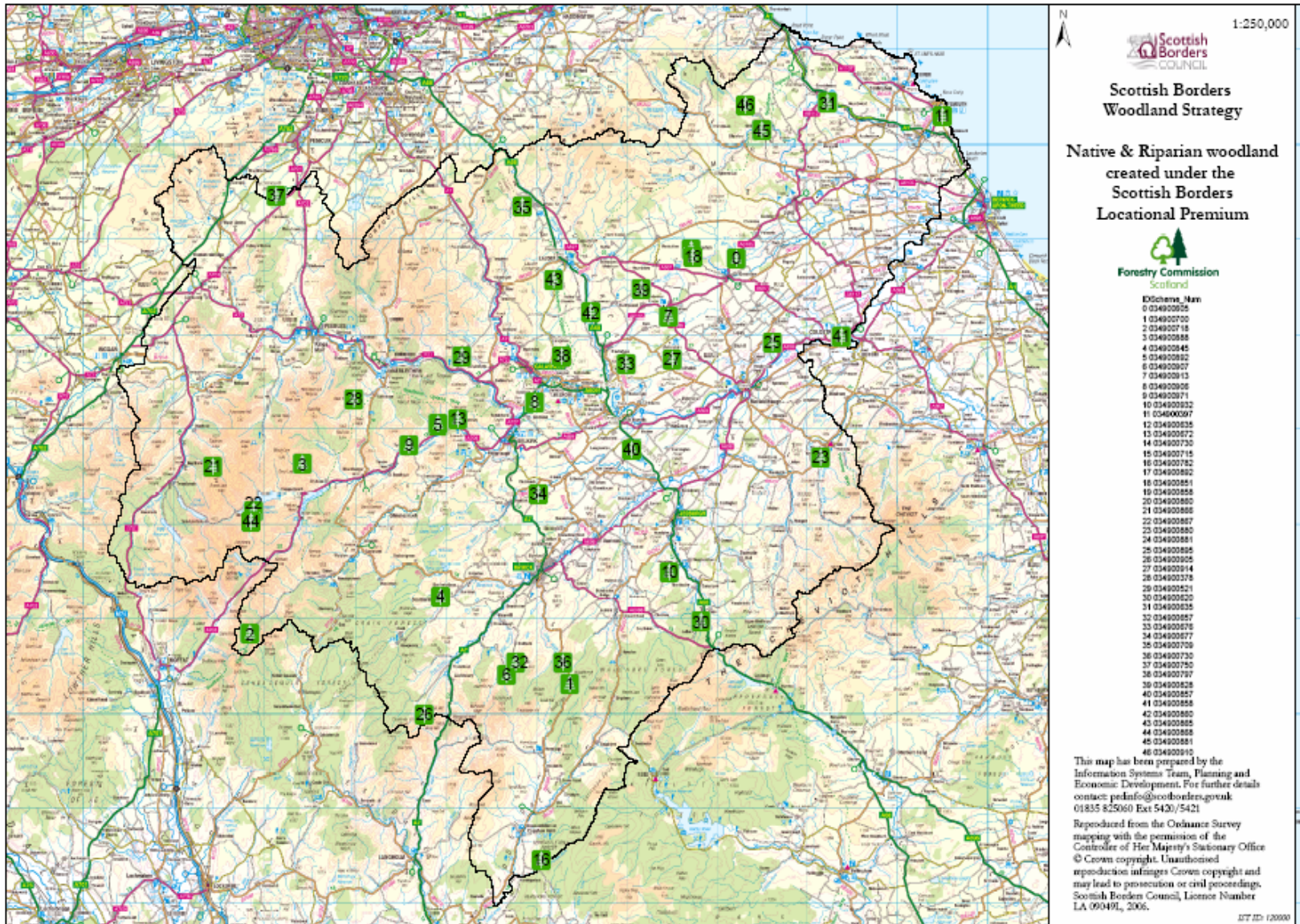
## Adopted November 2005

SCOTTISH BORDERS WOODLAND STRATEGY  
New Ways for Scottish Borders Trees, Woodlands and Forests

2005



# Locational premium





# Gap analysis

**Projects 2006-2009 Approx £k 166**

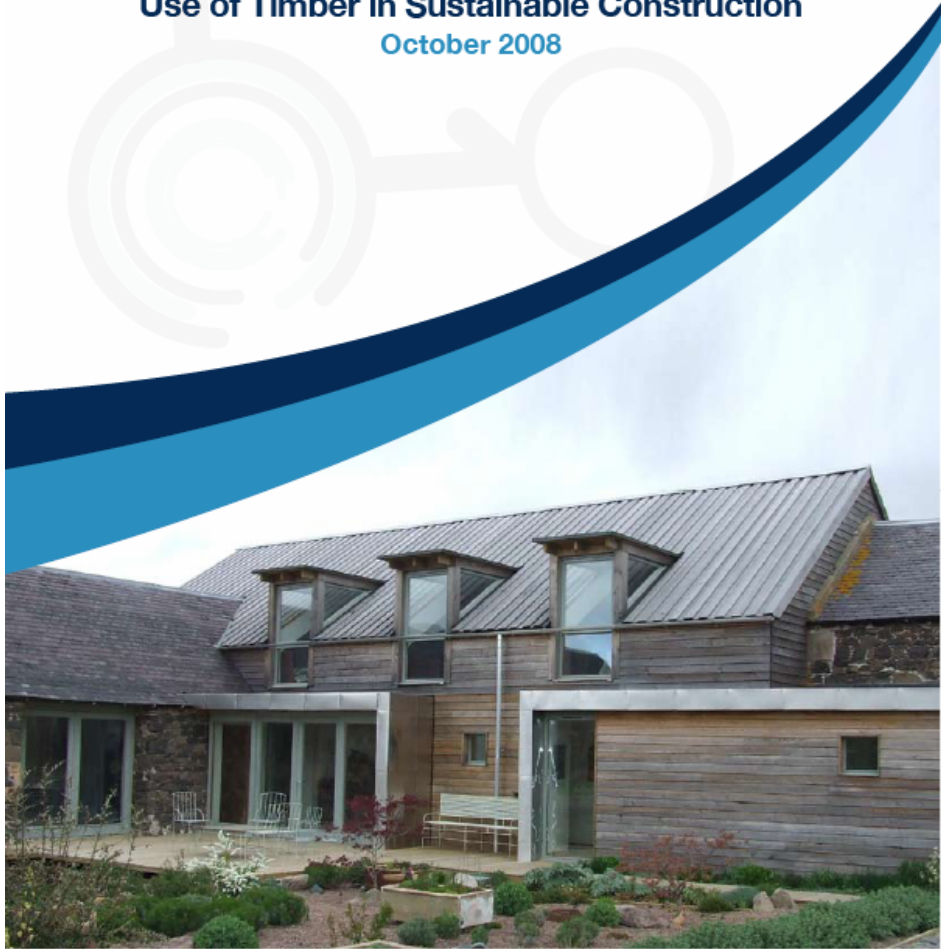
**Partnership for implementation of policies  
with contributions from: SBC, FCS, SNH, SEB  
& Leader+**

- 1 Wood Supply Chain and Small Businesses**
- 2 Construction & Sustainable Development  
using Local Timber**
- 3 Wood Fuel**
- 4 Designed Landscapes**

**Consultants developed each project with further  
funding for 'additional elements'**

Scottish Borders Local Plan  
Draft Supplementary Planning Guidance on

Use of Timber in Sustainable Construction  
October 2008





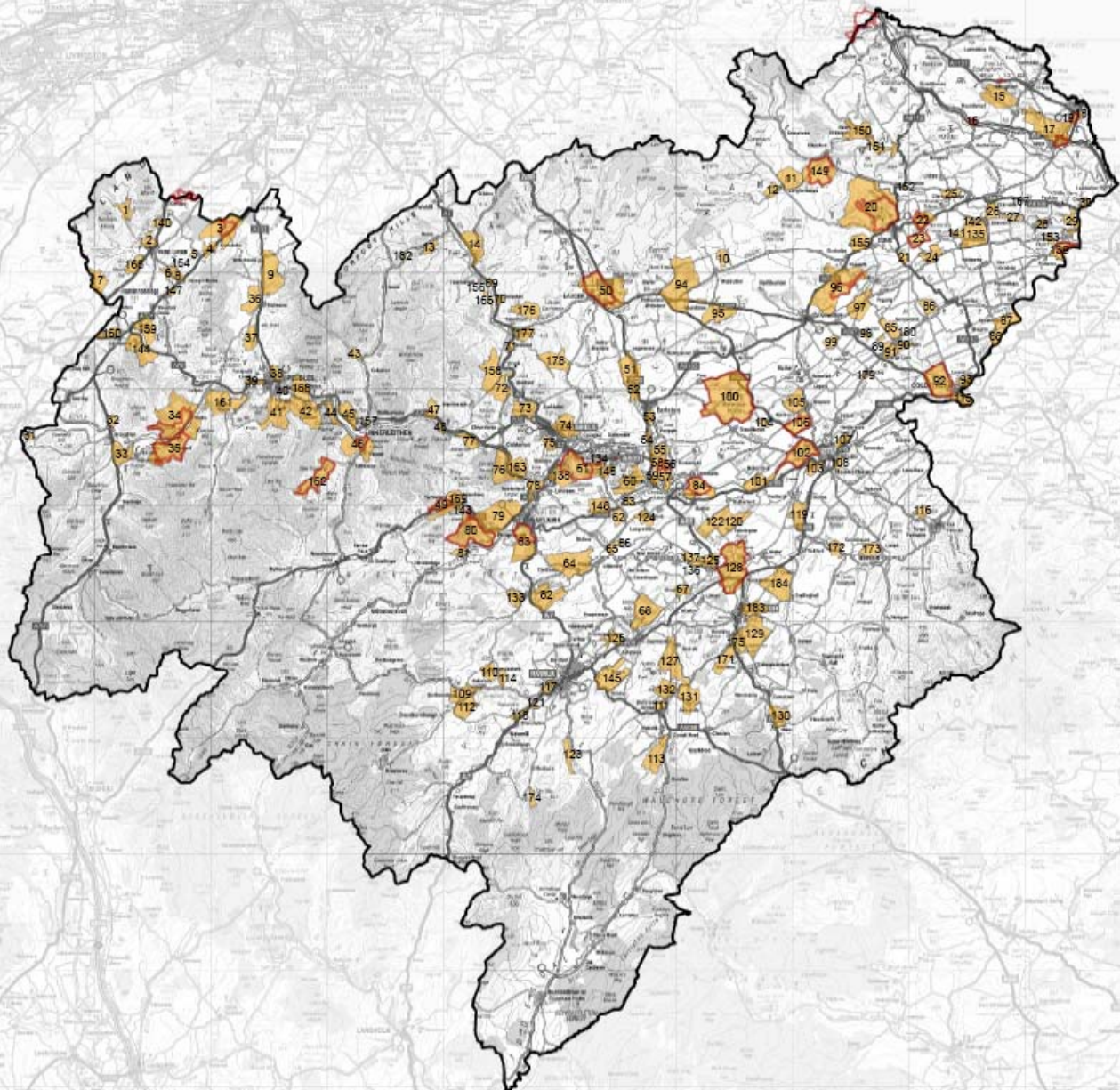
# Floors Castle - Roxburghe Estates



## Regional Designed Landscapes

### Key

-  SBC\_Designed\_Landscapes
-  HGDL



This map has been prepared by  
Planning & Economic Development  
For further details contact:  
Jim Knight  
01835 825148  
© Crown Copyright. All rights reserved. Scottish Borders Council, Licence 100023423, 2008.

- **Better awareness of the potential of local timber resources for building and fuel**
- **Better understanding of some of the limitations on supply chain**
- **Better communication between different stakeholder groups**
- **Increased understanding of cultural landscape resource**

## **More Projects 2009-2011 Approx £k70**

- 1 Potential New Markets for Non Spruce Conifer and Hardwood Timber Resources**
- 2.1 Potential Resource of Non Spruce Conifers and Hardwood Timber**
- 2.2 Audit of 'Under-managed' Woodlands**
- 3 Promote Woodlands Around Towns**
- 4 Promote Forest Habitat Network**

# Interim review of Scottish Borders Woodland Strategy

Action	Date
Analysis of actions identifying – achievements and unforeseen outcomes	4 Nov 2011
Review of key policy drivers	Ongoing
Long list of 10-12 actions prioritised for consideration –	Complete by 30 Nov
Consult SBWS and AWC partners to prioritise down to 3-4 actions for detailed review	Complete by end of December
Commence review and produce recommendations for any changes to current approach	Complete by end of Feb 2012
Consult on these changes and if appropriate adopt as interim guidance until LDP process complete	March-April 2012

# Review actions including biodiversity actions

Policy	Action	Lead Partners
PEB 1	Maximise opportunities for native and riparian woodland to contribute to the objectives of the Local Biodiversity Action Plan for woodlands.	SBC, FCS, SNH, BFT, SUP, Tweed Forum
PEB 2	Create strategic links between otherwise fragmented native woodlands by targeting expansion of ancient, native and riparian woodland to fit in with the existing Forest Habitat Network in Scottish Borders and neighbouring regions.	SBC, FCS, SNH, BFT, SUP, Tweed Forum
PEB 3	With appropriate partners, target existing and seek additional funding to manage, restore and expand Planted Ancient Woodland Sites (PAWS), native and riparian woodlands within the habitat networks identified as "preferred" areas in Map 7.	SBC, FCS, SNH, BFT, SUP, Tweed Forum
PEB 4	Support proposals to restore and expand areas of montane scrub within or adjacent to upland woodlands where this is consistent with the objectives of the Local Biodiversity Action Plan.	SBC, FCS, SNH, BFT, SUP, Tweed Forum
PEB 5	Ensure that there is an effective collaborative mechanism in place for the management and control of deer, grey squirrels, and other herbivores to protect the economic and ecological integrity of the woodland resource.	SBC, FCS, SNH, BFT, SUP, Tweed Forum



<b>Policy</b>	<b>Action</b>	<b>Lead Partners</b>
<b>PEB 6</b>	Encourage the sensitive management and expansion of woodland and woodland associated habitat, ensuring consideration of the requirements of other non-woodland priority habitats and species identified in the Scottish Borders LBAP.	<b>SBC, FCS, SNH, BFT, SUP, Tweed Forum</b>
<b>PEB 7</b>	Adopt the Forest Habitat Network principals and target funding to protect and enhance the Forest Habitat Network in Scottish Borders.	<b>SBC, FCS, SNH, BFT, SUP, Tweed Forum</b>
<b>PEB 8</b>	Encourage the protection and enhancement of the ancient woodland and planted ancient woodland sites in Scottish Borders through the delivery of the LBAP Native Woodland Habitat Action Plan.	<b>SBC, FCS, SNH, BFT, SUP, Tweed Forum</b>
<b>PEW 1</b>	Ensure that woodland expansion does not jeopardise water quality or the inherent characteristics of water courses through adherence to FC Forests and Water Guidelines and UK Forestry Standard.	<b>SBC,FCS, SHN, BFT, SUP, Tweed Forum</b>
<b>PEW 2</b>	With partners, identify where woodland management and/or expansion could have a positive impact on water quality and flood plain management within potential and preferred locations.	<b>SBC,FCS, SHN, BFT, SUP, Tweed Forum</b>

- Would you like to be consulted on the Interim review?
- Please leave e-mail contact details on the feedback form