

01

ENCOURAGING SUSTAINABLE ECONOMIC GROWTH CORPORATE TRANSFORMATION PROGRAMME

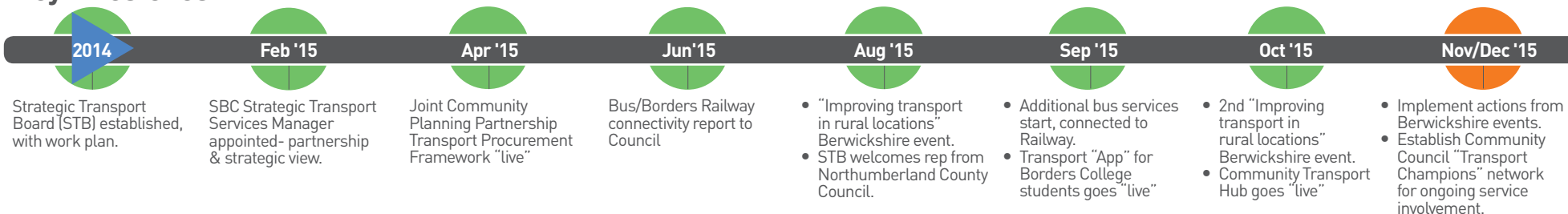
SUSTAINABLE TRANSPORT

Implementation of a better, simpler, more accessible and cost effective model of transport service provision, through a multi-agency approach.

Benefits

- savings and efficiencies
- strengthened partnership working
- reduced carbon footprint
- a sustainable approach that meets the needs of service users.

Key Milestones



Our Performance

Bus users (2015)

44% of Borders population
81% user satisfaction

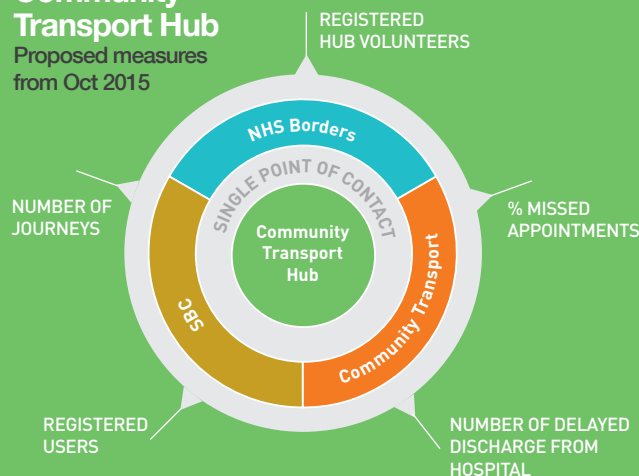
70% bus network subsidised by SBC
£1.8m cost to SBC in 14/15
927,172 passenger journeys in 14/15
£1.94 per journey

Home to School transport

4500 pupils eligible
Service operates **190** days per year
1.7m pupil journeys per year
21 complaints during 2014/15 (of which 7 were justified)

Community Transport Hub

Proposed measures from Oct 2015



FUNDING: SESTRAN "Smarter Choices" fund & Scottish Government "Integrated Care Fund"

Programme highlights

The CPP Transport Procurement Framework enables a shared approach to procuring and improving the quality and flexibility of transport across the Borders.

- 60 operators on the framework
- Approx **£10m** (annually) of partner transport activity to be tendered over the next 4 years
- Up to **£400k** of potential savings
- GO Awards "Team of the Year" finalist 2015/16 for this work

In June SBC approved enhancements to **bus/rail connectivity** (for 12 months) following the opening of the Borders Railway. Also agreed was a focus on marketing and promotion of current services.

Community events in Berwickshire will help the STB to **improve transport in rural locations**, developing solutions with the community. This approach has already resulted in some communities taking the lead in developing small projects in their localities.

