



Resilient Communities

Preparedness

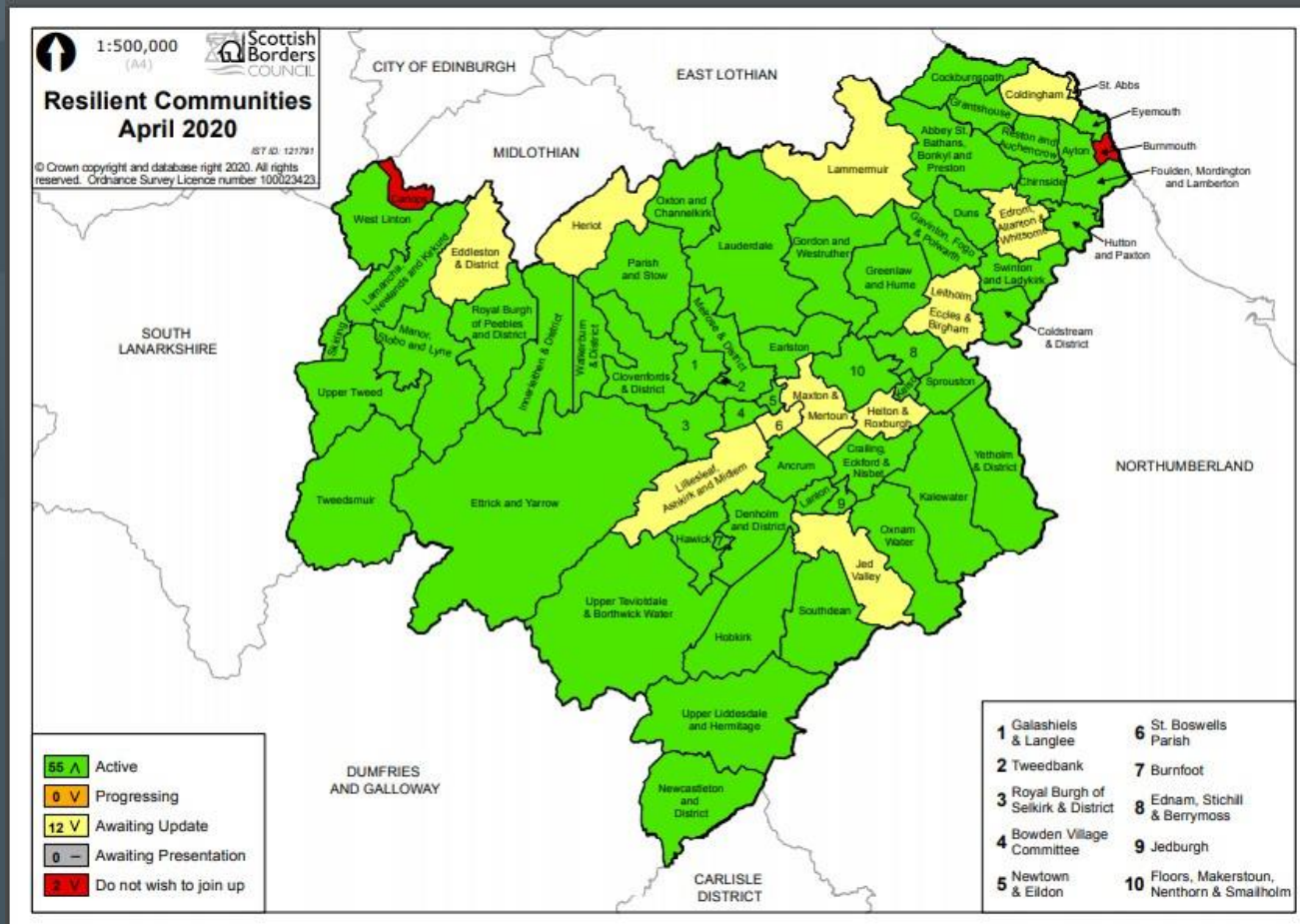
Response

Recovery

Emergency Planning Team, Scottish Borders Council



Groups in the Borders





Building Community Resilience

Scottish Government defines
Community Resilience as

“Communities and individuals harnessing resources and expertise to help themselves prepare for, respond to and recover from emergencies, in a way that complements the work of the emergency responders.”

Evaluating Scotland;

People in community resilience
groups describe it simply as:

- *How a community responds to an emergency*
- *Using local knowledge and strengths*
- *Working together to help each other out*
- *Community spirit*



About Community Resilience

Why do communities need to be resilient?

During an emergency responders will prioritise helping the most vulnerable; in the meantime there is a lot communities can do to help themselves

It goes beyond keeping people safe;

It helps build stronger social connections, self worth and bonds communities together



This isn't about doing the job of the emergency services. It's about supporting your community and those in it by making sensible preparations and using the skills and knowledge the community has.

Ready Scotland Website



Resilient Communities

- Local trained co-ordinator
- Local response group of volunteers
- Local resilience plan
- Trained & exercised
- Equipment supplied and available
- Insurance
- Sandbag Stores
- Direct contact with Response Team



Benefits of a Resilient Communities Plan

Volunteering and helping one another does not need to be organised centrally by government or by the local authority. Local Community Councils and individuals who are prepared and able to respond effectively, can deal with local issues, such as:-

- The clearing of snow from pathways of people who are unable to clear those themselves, to allow access etc.
- The clearing of snow from school and nursery access routes
- The placing of sandbags in risk areas to prevent flooding, placing domestic flood gates into position
- The delivery of supplies during severe weather, for example, shopping, water etc.
- Providing hot drinks and assistance within community centres and village halls
- Checking on neighbours to ensure their safety and well being during severe weather etc.



Resilient Communities

Plan Contents

- Community profile maps
- Flood event maps
- Gritting Routes
- Risk assessment
- Call tree
- Basic response information
- Household emergency plan



Resilient Communities

The benefits for a Resilient Community

- First Aid & General Training
- Early warning of severe weather or other information
- Single point of contact for co-ordinators
- Equipment provision
- Communities are more able to recover and restore normality



What Kit can we supply groups ?

Example of Wooden Storage Sheds (Equipment and Sandbags)





Resilient Communities Equipment



Scottish Borders Resilient Communities





Resilient Communities

- The work by all the RC Groups has been simply outstanding, with the Borders being held as the exemplar for other areas to aspire to.

Co-ordination

- Emergency Planning are a team of 5 trying to help with the coordination of the groups and standing the groups up when there is an emergency (usually weather related but not exclusively).



Select Language Powered by Google Analytics



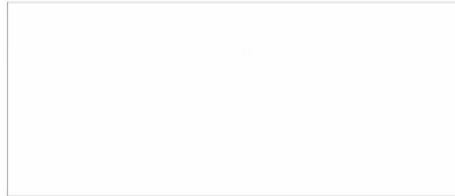
[Home](#) [About](#) [Resilient Communities](#) [Latest Alerts](#) [Sign Up](#) [Login](#)



Why Join SB Alert?

Find out what's really happening in your area - receive regular updates on crime, scams, weather warnings, road closures, and other emergencies.

SB Alert is a free messaging service where you decide, when and how you are kept alerted about the issues that matter to you.



The information you want...

You're in complete control over what information you receive



Crime alerts from the police



Information about emergencies



Alerts about scams and frauds



Severe weather warnings



Resilient Communities

Keep updated. Get Scottish Borders Alert. Scan the QR Code.

