

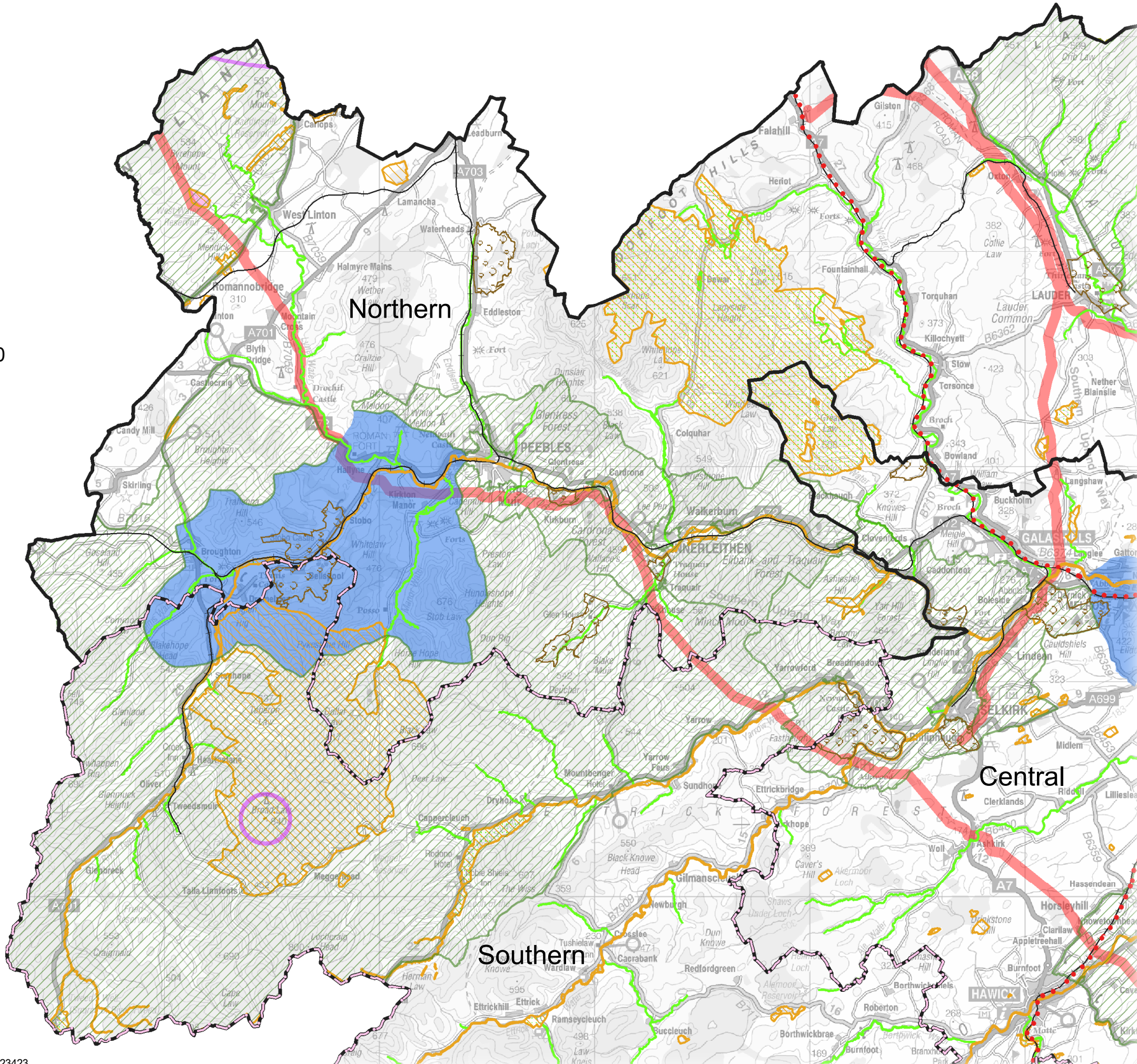
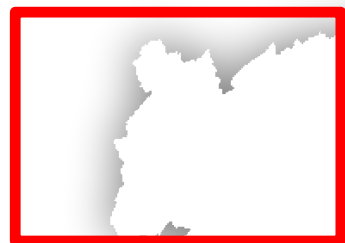
SCOTTISH BORDERS COUNCIL
PROPOSED LOCAL DEVELOPMENT PLAN 2013

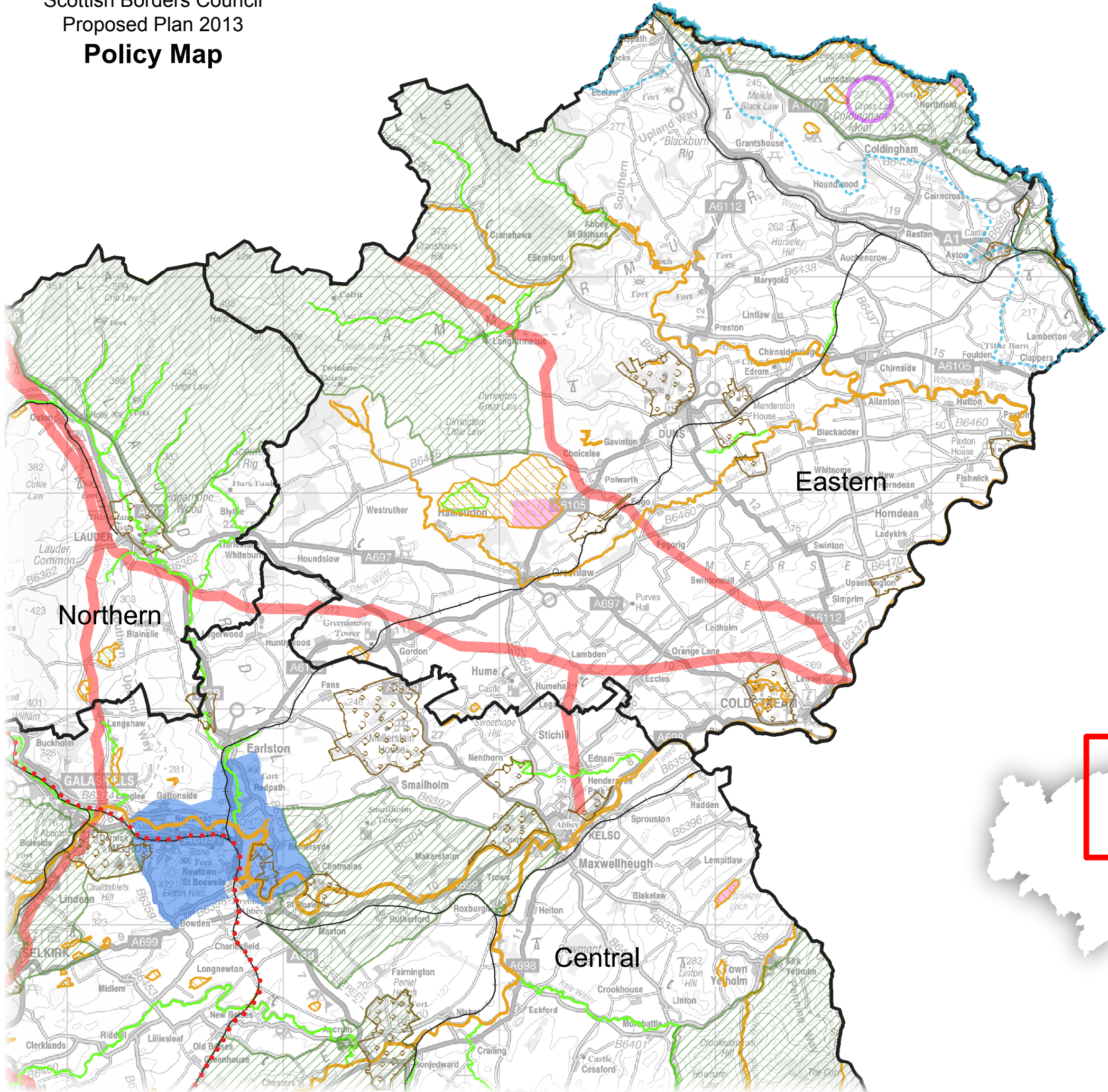
5. POLICY MAPS &
SETTLEMENT PROFILES
WITH MAPS

Policy Map

-  Housing Market Area
-  Dispersed Communities - HD2
-  Railway Safeguarding - IS4
-  Former Railway Network - EP12
-  Civil Aviation Authority Safeguarding - IS12
-  Gardens and Designed Landscapes - EP10
-  Special Landscape Area - EP5
-  National Scenic Area - EP4
-  Special Area of Conservation* - EP1
-  Site of Special Scientific Interest - EP2
-  Hazard Pipeline Buffers - IS12

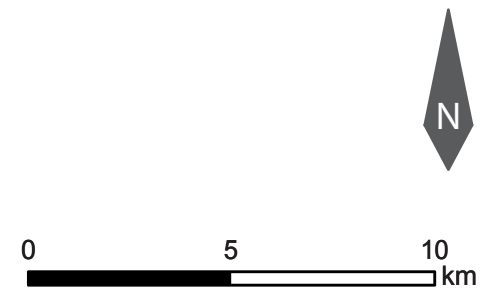
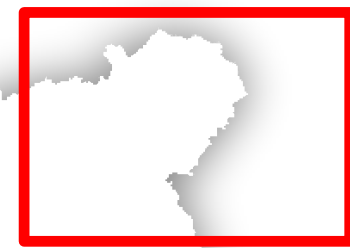
* The areas of the River Tweed (and tributaries) designated as Sites of Special Scientific Interest are also covered by Special Areas of Conservation.

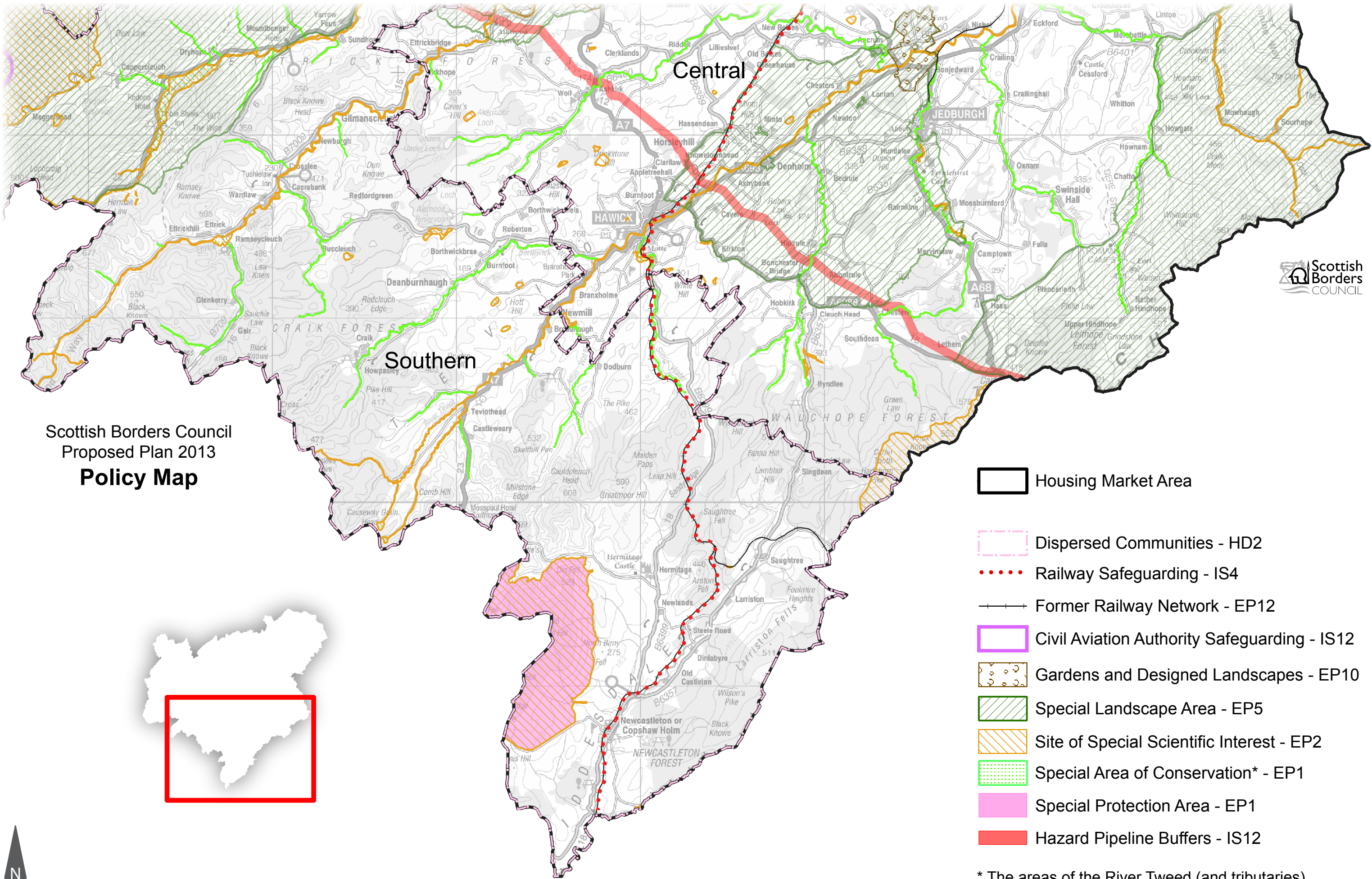




-  Housing Market Area
-  Coastal Policy - EP14
-  Railway Safeguarding - IS4
-  Former Railway Network - EP12
-  Civil Aviation Authority Safeguarding - IS12
-  Gardens and Designed Landscapes - EP10
-  Special Landscape Area - EP5
-  National Scenic Area - EP4
-  Site of Special Scientific Interest - EP2
-  Special Area of Conservation* - EP1
-  Special Protection Area - EP1
-  Hazard Pipeline Buffers - IS12

* The areas of the River Tweed (and tributaries) designated as Sites of Special Scientific Interest are also covered by Special Areas of Conservation.





Scottish Borders Council
Proposed Plan 2013
Policy Map

-  Housing Market Area
-  Dispersed Communities - HD2
-  Railway Safeguarding - IS4
-  Former Railway Network - EP12
-  Civil Aviation Authority Safeguarding - IS12
-  Gardens and Designed Landscapes - EP10
-  Special Landscape Area - EP5
-  Site of Special Scientific Interest - EP2
-  Special Area of Conservation* - EP1
-  Special Protection Area - EP1
-  Hazard Pipeline Buffers - IS12

* The areas of the River Tweed (and tributaries) designated as Sites of Special Scientific Interest are also covered by Special Areas of Conservation.

