



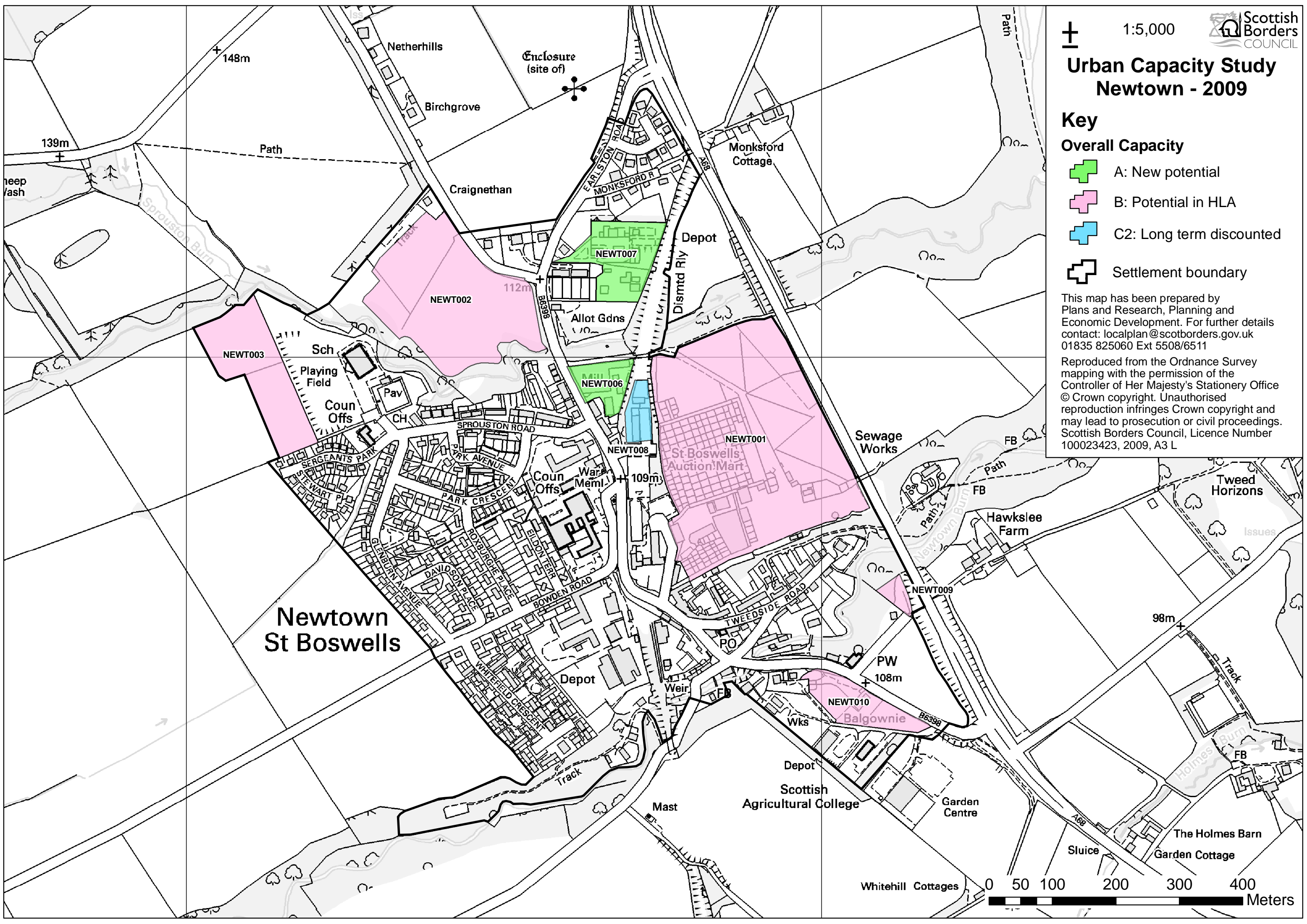
# Urban Capacity Study Newtown - 2009

## Key

- Overall Capacity**
- A: New potential
  - B: Potential in HLA
  - C2: Long term discounted
  - Settlement boundary

This map has been prepared by Plans and Research, Planning and Economic Development. For further details contact: [localplan@scotborders.gov.uk](mailto:localplan@scotborders.gov.uk) 01835 825060 Ext 5508/6511

Reproduced from the Ordnance Survey mapping with the permission of the Controller of Her Majesty's Stationery Office © Crown copyright. Unauthorised reproduction infringes Crown copyright and may lead to prosecution or civil proceedings. Scottish Borders Council, Licence Number 100023423, 2009, A3 L









# Urban Capacity Study Peebles - 2009

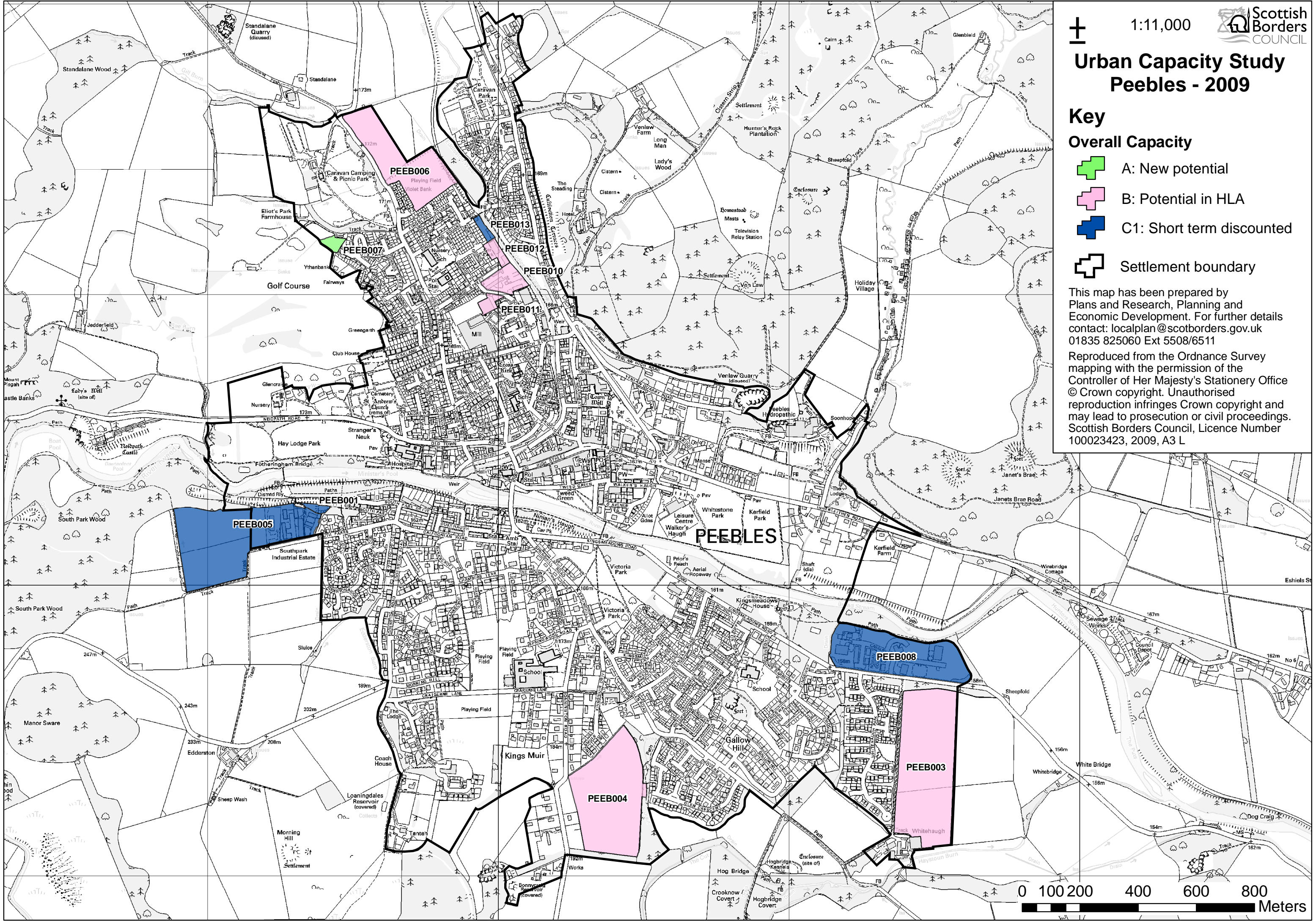
## Key

### Overall Capacity

-  A: New potential
-  B: Potential in HLA
-  C1: Short term discounted
-  Settlement boundary

This map has been prepared by Plans and Research, Planning and Economic Development. For further details contact: [localplan@scotborders.gov.uk](mailto:localplan@scotborders.gov.uk) 01835 825060 Ext 5508/6511

Reproduced from the Ordnance Survey mapping with the permission of the Controller of Her Majesty's Stationery Office © Crown copyright. Unauthorised reproduction infringes Crown copyright and may lead to prosecution or civil proceedings. Scottish Borders Council, Licence Number 100023423, 2009, A3 L










# Urban Capacity Study Selkirk - 2009

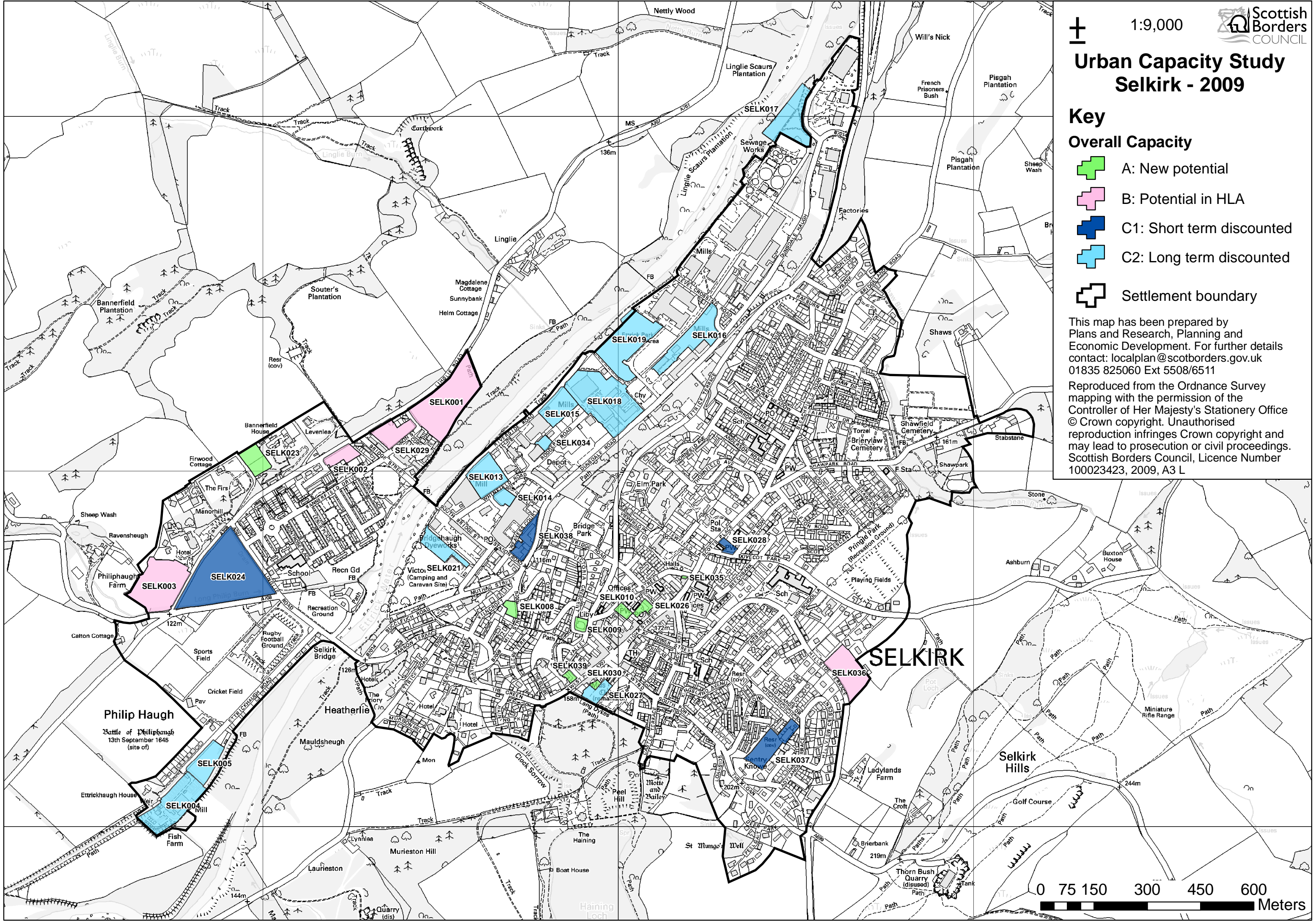
## Key

### Overall Capacity

-  A: New potential
-  B: Potential in HLA
-  C1: Short term discounted
-  C2: Long term discounted
-  Settlement boundary

This map has been prepared by Plans and Research, Planning and Economic Development. For further details contact: [localplan@scotborders.gov.uk](mailto:localplan@scotborders.gov.uk) 01835 825060 Ext 5508/6511

Reproduced from the Ordnance Survey mapping with the permission of the Controller of Her Majesty's Stationery Office © Crown copyright. Unauthorised reproduction infringes Crown copyright and may lead to prosecution or civil proceedings. Scottish Borders Council, Licence Number 100023423, 2009, A3 L



**Philip Haugh**  
Battle of Philiphaugh  
13th September 1645  
(site of)

**SELKIRK**

**Selkirk Hills**

