

Coastal

Coastal -
The Berwickshire Coast



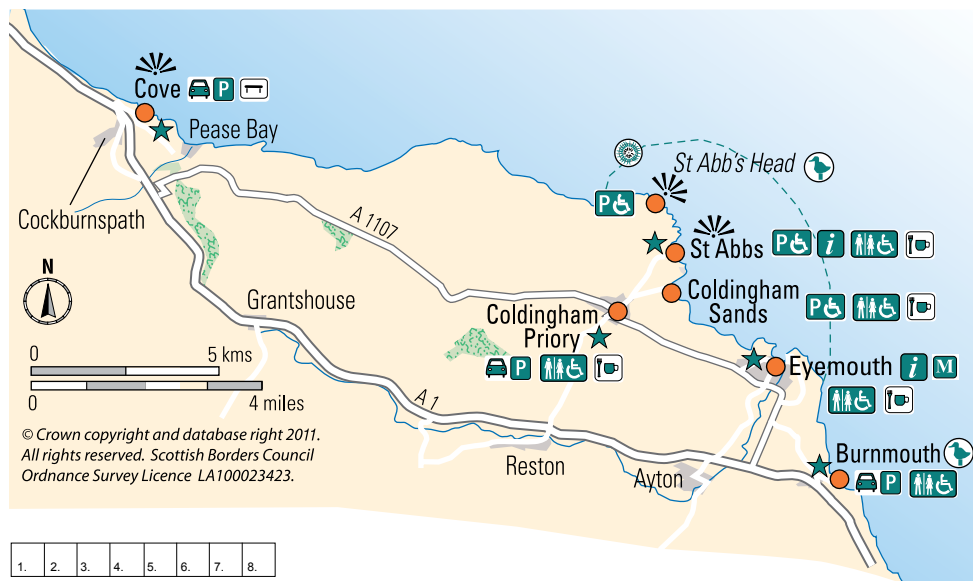
Check out the Paths around Eyemouth booklet and the Berwickshire Coastal Path at www.scotborders.gov.uk/walking

Some locations on the coast have some easy access. Sea views, villages, harbours, historic locations, and wildlife may be seen in this area.

Locations include:
Cove Harbour - Parking area allows for coastal views.

Burnmouth - Park at Lower Burnmouth to watch birds at the rocky shore. Picnic tables.

Further information: please see the Paths around Eyemouth booklet and the Berwickshire Coastal Path at www.scotborders.gov.uk/walking



© Crown copyright and database right 2011. All rights reserved. Scottish Borders Council Ordnance Survey Licence LA100023423.

- | | | | | | | | |
|----|----|----|----|----|----|----|----|
| 1. | 2. | 3. | 4. | 5. | 6. | 7. | 8. |
|----|----|----|----|----|----|----|----|

1. Cove Harbour 2. Sculpture 3. Burnmouth harbour 4. Lobster Creel 5. Luckenbooth at Coldingham Car park 6,7, Coldingham Priory 8. Common Blue butterfly

Coastal 1

Coastal -
Coldingham Priory



Start finish and Parking
Coldingham Village Car park

Distance: 200m

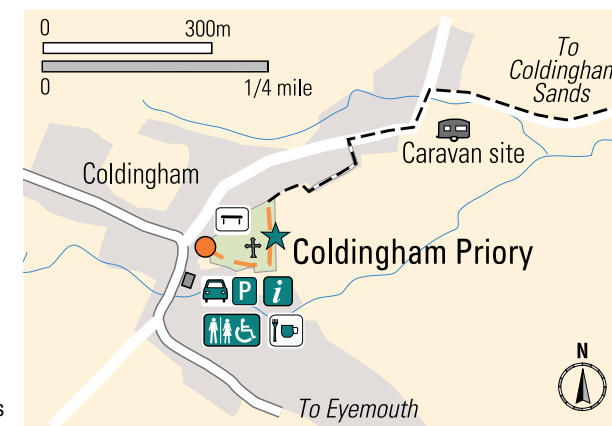
Terrain: level, hard surfaced paths

Toilets: Disabled Access Toilets at Car park

Coldingham Priory

The atmospheric ruins of Coldingham Priory represent nearly 1000 years of unbroken worship. A church was founded here in 1098 by King Edgar I of Scotland, possibly on the site of an earlier Anglo-Saxon monastery. Edgar's church grew into a priory, and its community lived in Coldingham for 400 years. The Priory was largely destroyed by Oliver Cromwell in the 17th century.

Further information:
www.rcahms.gov.uk
www.coldingham.info



- coastal sites
- viewpoint
- Facilities**
- visitor information
- car parking
- disabled parking
- toilets
- cafe or area with vending machines
- seat
- wildlife interest
- maritime museum

© Crown copyright and database right 2012. All rights reserved. Scottish Borders Council Ordnance Survey Licence LA100023423.



Coastal 2

Coastal - Coldingham Sands

walkit

Coldingham Sands is a sheltered sandy beach. The sand stretches for a kilometre within the bay and there are rocky shores at either end of the beach.

Start and finish: Disabled parking at Coldingham Sands.

Distance: 100metres

Terrain: Paved path to paved viewpoint area and bench.

Parking: General parking including some disabled parking near beach. Disabled parking is available for 2 cars at the bottom of the steep tarmac road beyond the gate (which is open at all times).

Toilets: Disabled access RADAR toilet.

Facilities: Picnic tables, Bench seats, Seasonal café. Information panels are at a suitable height for wheelchair users.

Accessibility

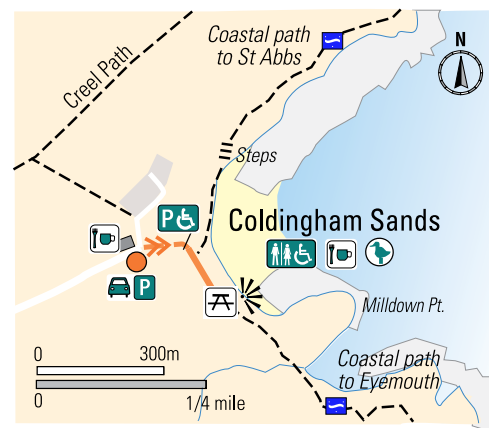
Sand on the beach is deep and very soft and wheelchair wheels are liable to sink into this. Other paths around the beach are low level with some steep and rough sections.

How to get there: A regular bus service from Berwick-upon-Tweed; where there is a railway station. The local bus stops at Eyemouth, Coldingham Village and St Abbs Village.

There is an unclassified road from Coldingham Village to Coldingham Bay.

For more information visit:

www.scotborders.gov.uk



© Crown copyright and database right 2012. All rights reserved. Scottish Borders Council Ordnance Survey Licence LA100023423.

Route Information

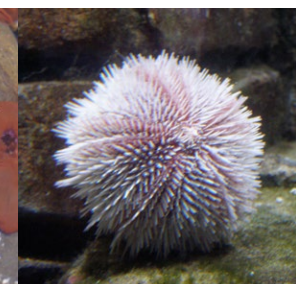
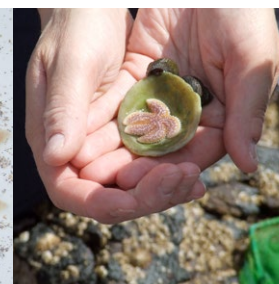
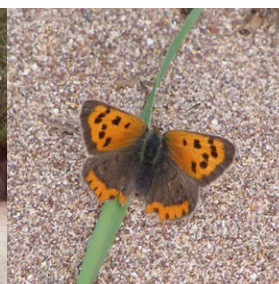
- suggested route - mainly hard surfaced, wide, level path
- other mainly hard surfaced, wide, level path
- other path
- steps
- steep gradient
- viewpoint

Facilities

- visitor information
- car parking
- disabled parking
- toilets
- cafe or area with vending machines
- picnic area
- seat
- wildlife interest

1.	2.	3.	4.	5.	6.	7.	8.
----	----	----	----	----	----	----	----

1. Coldingham Sands 2. Disabled Parking 3. At the accessible picnic area
4. Small Copper butterfly 5. Crab 6. Starfish 7. Beadlet anemone 8. Sea urchin



Coastal 3

Coastal - St Abbs - Eyemouth Voluntary Marine Reserve

walkit

St Abb's Nature Centre and Eyemouth Voluntary Marine Reserve

The area of the marine reserve is shown on the map on page 34. It includes the sea area by St Abbs, Coldingham and Eyemouth.

For more information visit:

www.marine-reserve.co.uk

Coastal 4

Coastal - St Abb's Head Nature Reserve - Starney Bay

walkit

Rocky headland, grassland, cliffs. Paths from the car park to Starney Bay are wide, hard and fairly level. This provides access to view birds. How to get there - St Abb's Head is off A1107, 2miles North of Coldingham

Start and finish: St Abb's Head car park (wheelchair users may park in the area below buildings where there is a hard level path to toilets, tearoom and craft shops.)

Distance: 1/2 mile/1km

Terrain: Fairly level countryside paths.

Parking: Nature Reserve Car Park with no special provision.

Toilets: Wheelchair access toilet near visitor centre

Facilities: Picnic tables, cafés.

- As you reach the cliff area take care and look out for seabirds such as fulmars and kittiwakes from the viewpoint.
- Retrace your steps to return.
- To extend your walk and visit the St Abbs Visitor Centre cross the road and follow the path to the top of the village and return.

Note: disabled visitors may drive to the Lighthouse car park (far end of the Reserve) to see views of the sea.

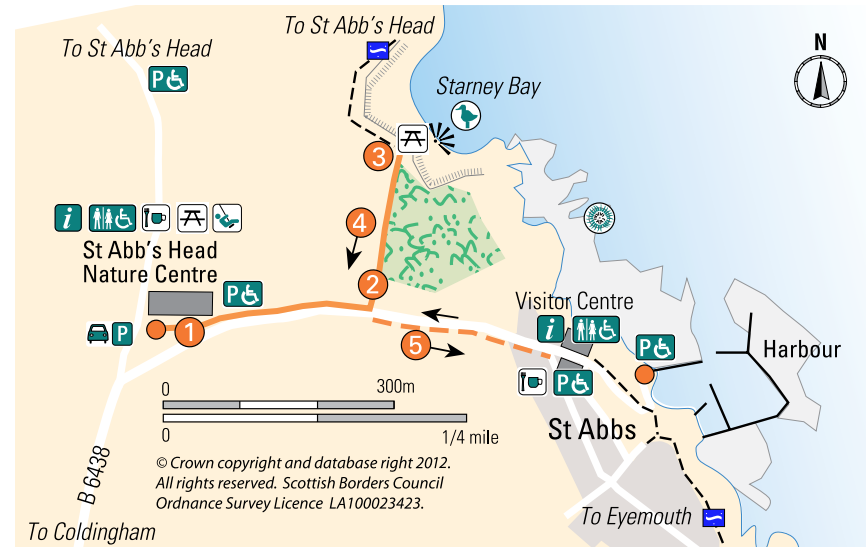
National Trust for Scotland

Countryside Ranger
Rangers Cottage
Northfield
St Abbs
Berwickshire
TD14 5QF
Tel/Fax 018907 71443

- Follow the path alongside a field to the corner.
- Turn left to continue alongside a wall.

1.	2.	3.	4.	5.	6.	7.	8.
----	----	----	----	----	----	----	----

1. Bell Hill and St Abb's Head 2. Guilmots 3. At the viewpoint 4. Visitors at Starney Bay 5. Fulmar 6. Herring Gull 7,8. St Abbs Harbour



- Route Information**
- suggested route - mainly hard surfaced, wide, level path
 - other path
 - viewpoint
- Facilities**
- visitor information
 - car parking
 - disabled parking
 - toilets
 - cafe or area with vending machines
 - picnic area
 - wildlife interest
 - voluntary marine reserve

The St Abbs Visitor Centre sits on a high point at the top of the village. It was created in 2011 and is based in the former village hall. There are displays, artefacts and interactive exhibits covering a broad range of topics including the history, heritage, wildlife and stunning geology of the area. They have a portable ramp that can be put in place if required. www.stabbsvisitorcentre.co.uk



Coastal 5

Coastal - Eyemouth Bantry and Gunsreen House

walkit

An interesting route around this traditional fishing village. There is an array of boats and buildings to look at including Gunsreen House.

Start and finish: Eyemouth car park by harbour.

Distance: 1 mile/1.5km

Terrain: Hard surfaced level pavements etc.

Parking: Disabled access parking places at swimming pool and at harbour car park

Toilets: Wheelchair access RADAR toilet in Eyemouth, at top end of harbour.

Facilities: Picnic tables, bench seats by the promenade.

- To go to Gunsreen House. From the car park at the edge of the harbour by the toilets- go straight ahead to follow the harbour around with the sea on your left. Take care and be aware that this is a working harbour.
- Continue over the bridge to Gunsreen House.
- Retrace your steps to return.

For more information: please see the Paths around Eyemouth booklet and the Berwickshire Coastal path www.scotborders.gov.uk/walking

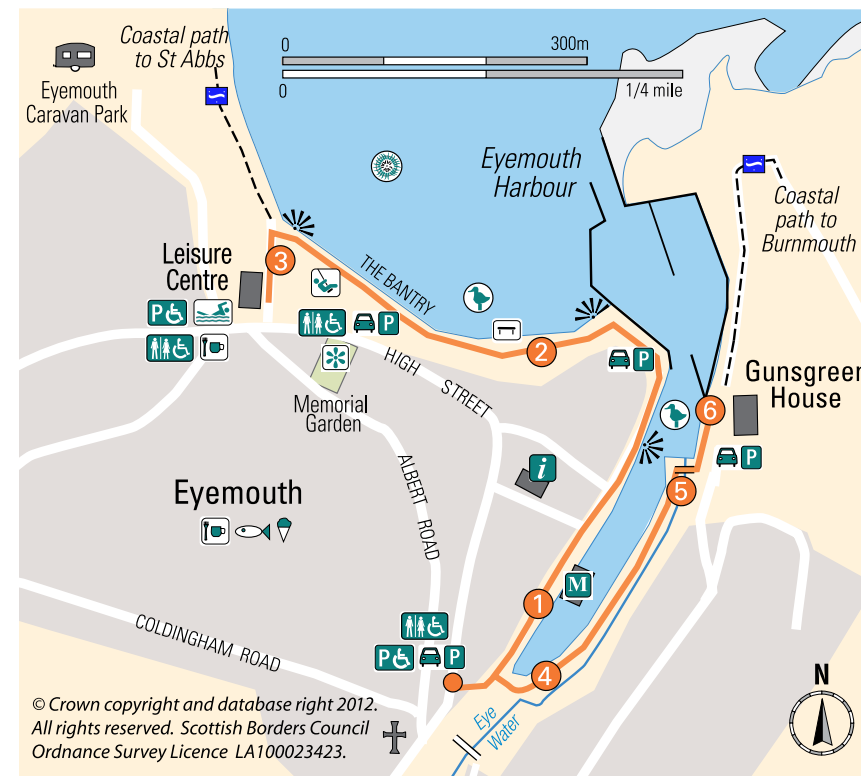


Gunsreen House
www.gunsreenhouse.org

- With the harbour on your right follow the road around to reach the beach.
- Continue along the path above the beach "The Bantry" to reach Eyemouth Swimming Pool.
- Retrace your steps to return.

1.	2.	3.	4.	5.
----	----	----	----	----

- Eyemouth Harbour
- Grey seal
- Harbour and Gunsreen House
- Herring Gull
- Eyemouth and Harbour from Gunsreen



© Crown copyright and database right 2012.
All rights reserved. Scottish Borders Council
Ordnance Survey Licence LA100023423.

- Route Information**
- suggested route - mainly hard surfaced, wide, level path
 - other path
 - steep gradient
 - viewpoint
- Facilities**
- visitor information
 - car parking
 - disabled parking
 - toilets
 - cafe or area with vending machines
 - seat
 - playpark
 - gardens
 - swimming pool
 - wildlife interest
 - maritime museum