

## Learning & Wellness Village

Our Vision for Earlston is to deliver a Community Campus which facilitates the positive health and well-being benefits of social interaction between children, parents, teachers and the wider community. The Earlston site presents an opportunity for a new approach which combines multi agency partners within a learning environment providing easy access to a wide range of high quality Community and health facilities at a convenient location in the heart of the Community.

### ARRANGEMENT ON SITE

The programme is split into two buildings, a single storey pavilion housing the Health Centre to the east and a 2 storey education block to the west. These two buildings are linked by a central shared reception which includes the Community Library, and a Multi-Use Space.

The school is orientated north to south with the main access to the West at the end of the new safer routes to school path. Most classrooms will have direct external access either at ground level or on upper terraces. The school benefits from south facing playgrounds with external covered spaces integral to the building which will offer protection from the elements.

The nursery is contained within the site away from traffic with defined and varied external play areas. The nursery is located adjacent to the P1,2 and 3 classrooms and playground promoting interaction between the early year groups.

The sports hall and dining space which can be connected to form a large events space are located to the north fronting the High Street presenting an active frontage to the street and facilitating Community access in the evenings and at weekends. A new external plaza creates an attractive and safe buffer zone to the busy street with a welcoming and defined entrance to the building.

The Health Centre is located to the East with the consulting rooms fronting the East Green. A discrete ambulance collection point has been placed to the south.

The buildings are set within a carefully planned landscape which manages access and site levels creating a range of external play and meeting spaces for both the pupils and the public to enjoy.

A destination play park is located between the Leader Valley School and New School.



- Site Plan Legend:
1. School Entrance for Pupils
  2. Community / Public Entrance & Plaza
  3. Bus Drop Off
  4. Health Centre Parking (Out of hours Community use)
  5. Nursery Play
  6. Primary Play
  7. Destination Play Park
  8. Parent Drop Off Zone
  9. MUGA Pitch
  10. Leader Valley School
  11. Staff Car Park (Out of hours Community use)
  12. Safer Route to School
  13. Eildon Housing Development
  14. East Green

## Scottish Borders Education Vision

Location

Site

Vision

Programme & Consultation

Design Aspirations

# 10

### PROPOSED PLANS

The brief for the project was to create a Community Campus with a focus on education, wellness and inclusion. In bringing together the Health Centre, Library, Community Facilities and the School we have been ever mindful of the relationships between the different spaces and visitors to these facilities. The components of the brief have been organised to ensure that the area occupied daily by pupils and nursery children is well defined and the privacy of patients of the Health Centre is respected with no Community cross-over during school operational hours.

School pupils will enter the building from the west with an external stair providing direct access to the upper floors. All education activities with the exception of visits to the central library are conducted in the 2 storey western half of the building.

The plan is orientated north/south to maximise open views to the south and natural light to the classrooms with the sports hall and dining room occupying the public frontage to the High Street. This arrangement also facilitates use of the sports hall and dining room by Community Groups with direct access possible from the central reception without passing through any classroom zones.

The nursery is accessible from the main shared entrance with an external covered area for prams and buggies to be stored. The library and multi-use space will be managed by the shared reception with a secure barrier controlling access to and from the main school areas.

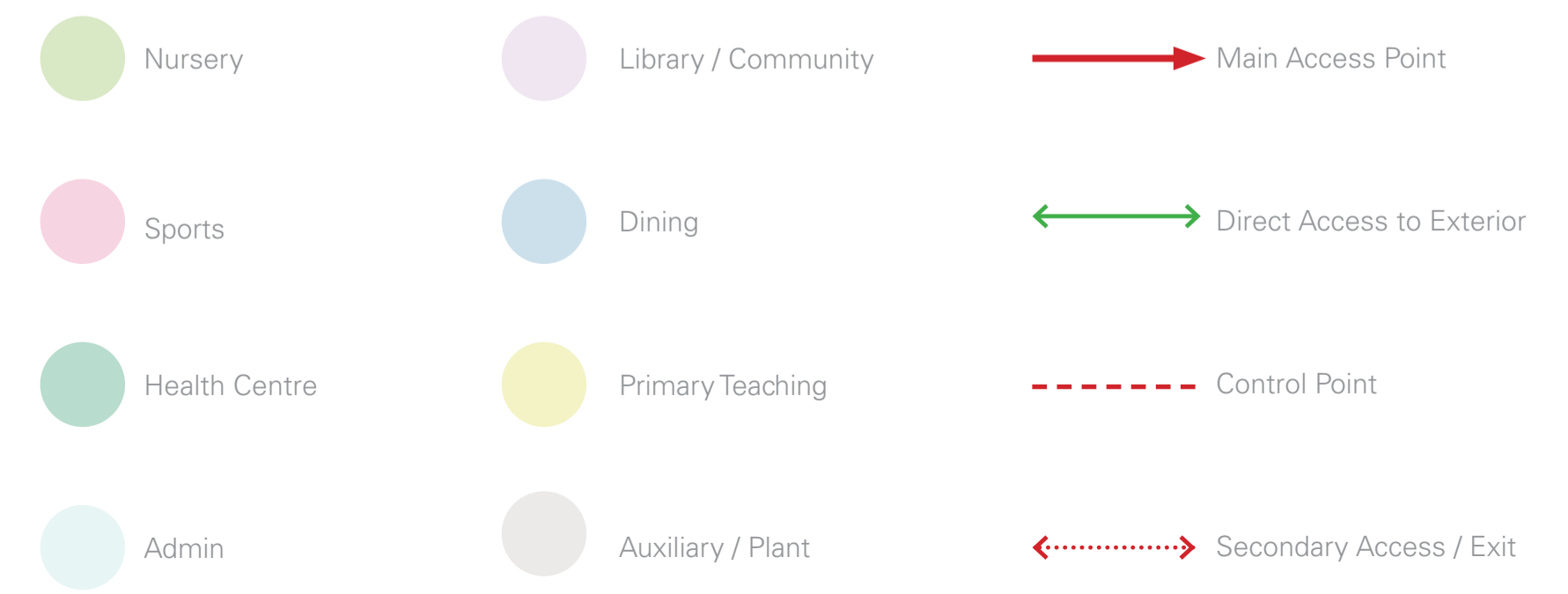
The Health Centre has a dedicated entrance accessible from the High Street and new Public Plaza. This single storey pavilion will provide consultant rooms, treatment spaces as well as GP practice rooms. The consulting rooms are located to the East of the building with outlook over the East Green. The Health Centre can be accessed from the shared central reception if this is desired and a discreet ambulance collect area has been placed to the south of the building.



Ground Floor Plan



First Floor Plan



Scottish Borders Education & Community Vision

Location

Site

Vision

**Programme & Consultation**

Design Aspirations

11

**Project Timeframe**

The proposals for Earlston have been on the drawing board for a number of years. This has given SBC and the Design Team time to review the proposals within the context of changing needs of the Community and future proofing through lessons learned during the Covid-19 epidemic. It is now important that the opinions and thoughts of the Earlston Community on the revised proposals are heard which will shape the design before it is submitted to the Planning Authorities.

**CONSULTATION PROCESS**

The plans, images and information shown on the consultation boards illustrate the progress of the project to date and should not be considered as a finalised design.

Prior to submission for Planning the project will be reviewed to take cognisance of feedback and information received at the Community Consultation Event.

The views of the residents of Earlston and users of the School, Nursery and Health Centre will ensure these proposals are a positive and meaningful addition to the town.

There are a team of people at the event who will be happy to answer any questions you may have.

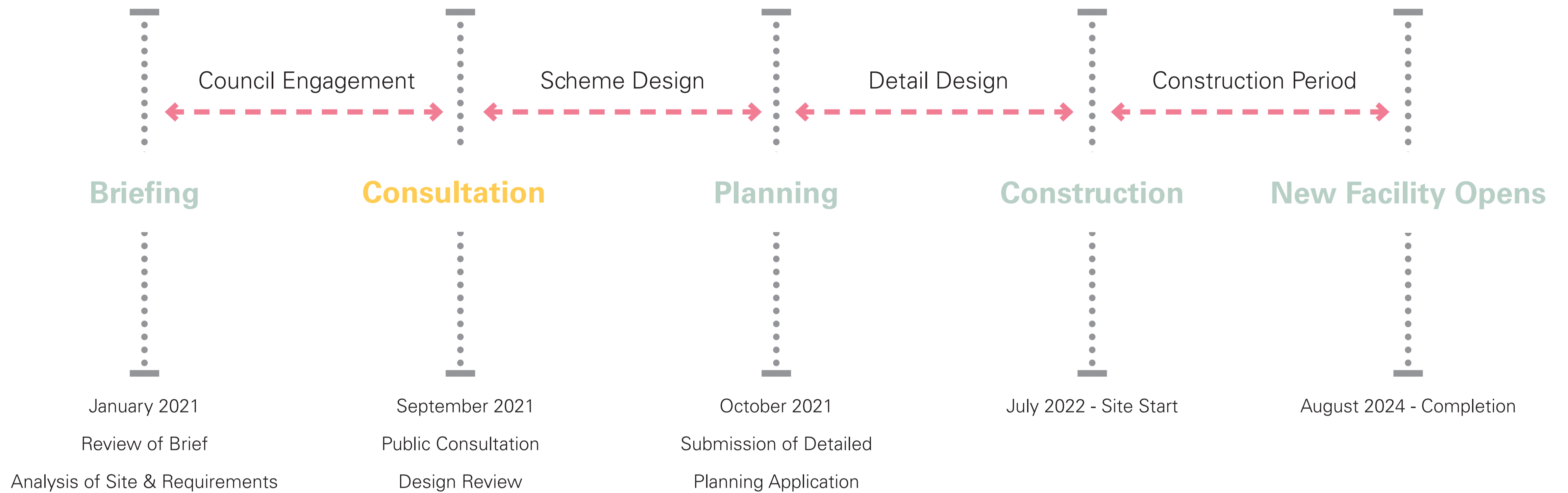
However if you are unable to attend or would prefer to contact us directly you can share your thoughts and comments by email at the following:

PlaceProjects@scotborders.gov.uk

The boards which are shown at the Community Consultation event can also be viewed online:

<https://www.scotborders.gov.uk/earlstonprimaryconsultation>

Thank you for your time and interest.

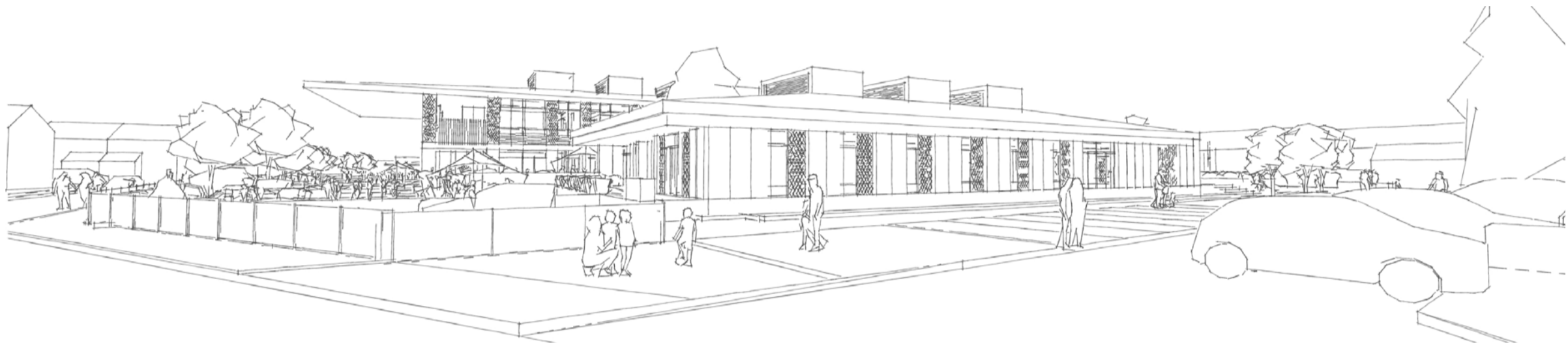


**Inspiration and Sketch Design**

The design intent is to create a distinctive "learning and wellness village" oriented towards Earlston's common culture and natural setting. The architecture will be conditioned to a human scale with a contextual form that creates a characteristic building, immediately recognisable and identifiable to the local population. The design is anchored in both tradition and innovation, through form and materiality. It will become an immersive educational, wellness and Community environment where both past, present and future is tailored for the transfer and creation of knowlege, learning and wellbeing.



Sketch View of Main Entrance from High Street



Sketch View of Health Centre from East Green



Sketch View of School Across Playground

