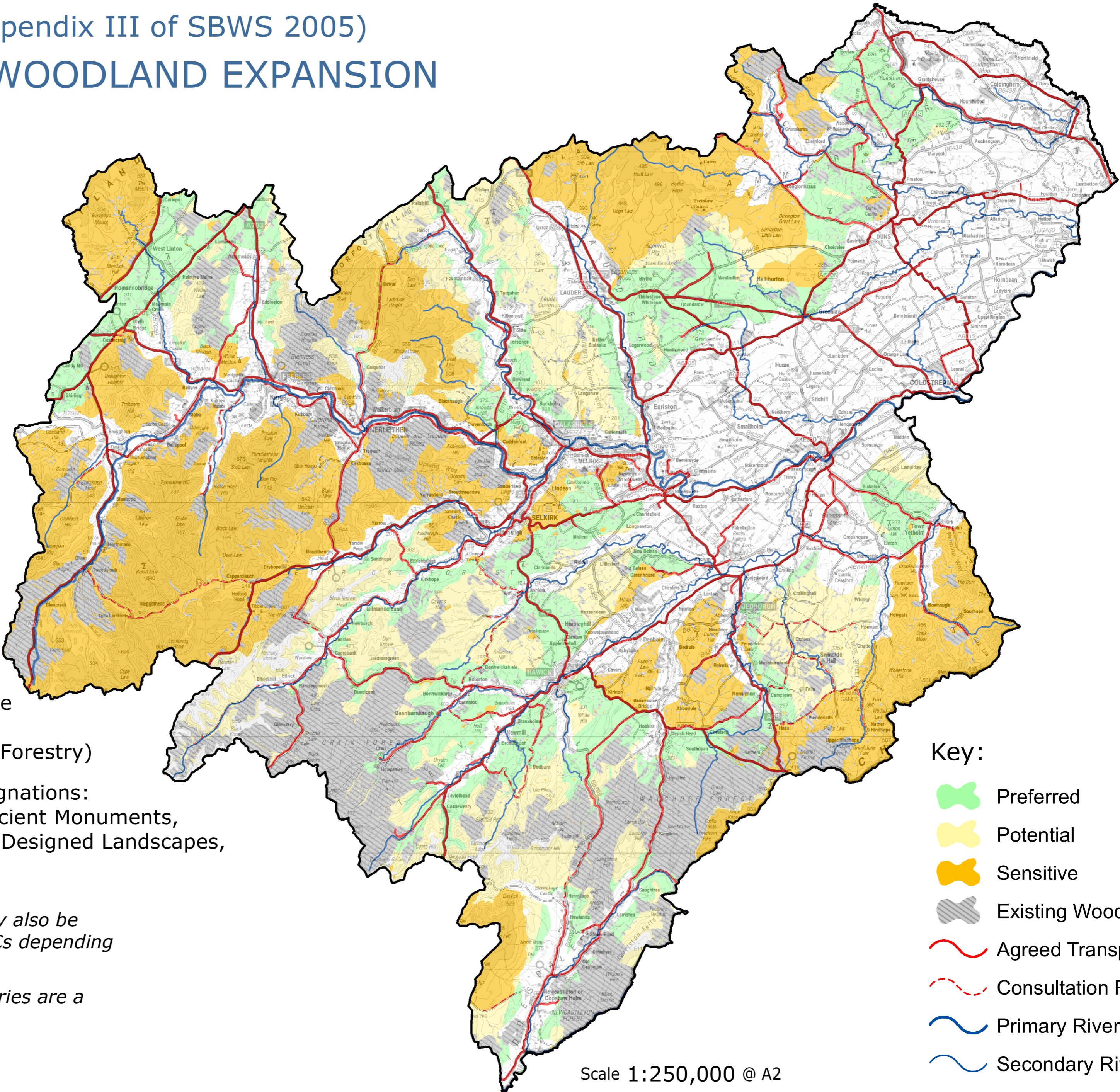


APPENDIX C (Updates Appendix III of SBWS 2005) OPPORTUNITIES FOR WOODLAND EXPANSION



**MAP 6
UPLAND / UPLAND
FRINGE FORESTS AND
WOODLANDS**

EXPLANATORY NOTE:
The categories have been created on this map using the following GIS parameters:



Preferred - includes all land classified Upland and Upland Fringe in the Borders Landscape Assessment that is also classified as F5 or better in Land Capability for Forestry classification and that lies within 2km of an agreed timber transport route.

Potential - includes all other plantable land classified Upland and Upland Fringe in the Borders Landscape Assessment (i.e. F6 or better in Land Capability for Forestry)

Sensitive - includes the following designations: Designated wildlife sites, Scheduled Ancient Monuments, Special Landscape Areas, Gardens and Designed Landscapes, National Scenic Areas

* *Appropriate native woodland planting may also be preferred or potential within SSSIs and SACs depending on the nature of the sensitivity.*

* *NB: The River Tweed and its main tributaries are a designated SSSI.*

- Key:**
-  Preferred
 -  Potential
 -  Sensitive
 -  Existing Woodland
 -  Agreed Transport Route
 -  Consultation Route
 -  Primary River
 -  Secondary River

Scale 1:250,000 @ A2